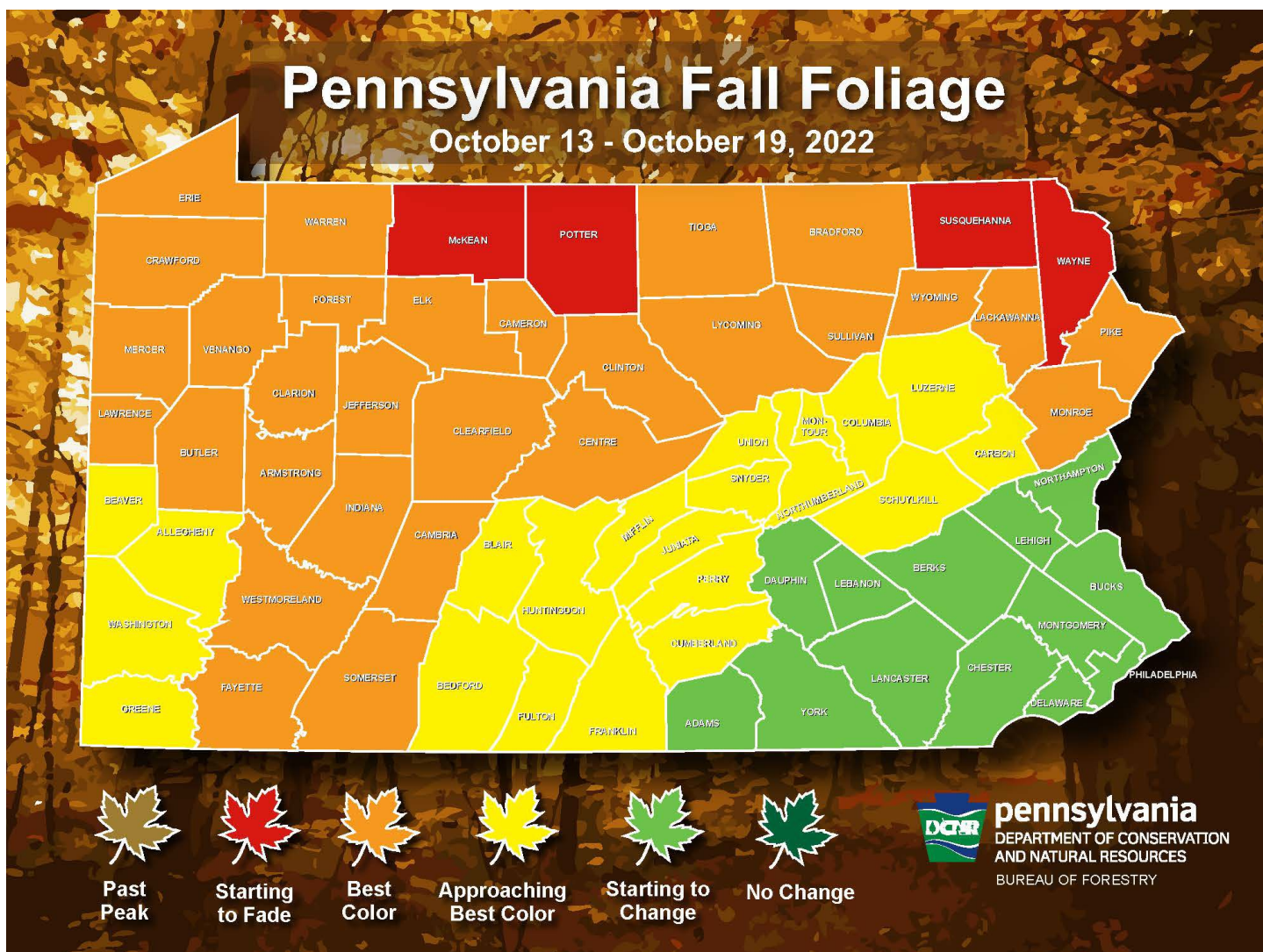


**Pennsylvania Department of Conservation and Natural Resources
Bureau of Forestry**

PENNSYLVANIA WEEKLY FALL FOLIAGE REPORT

October 13 – October 19, 2022



To predict peak season from the colors, use these guidelines:

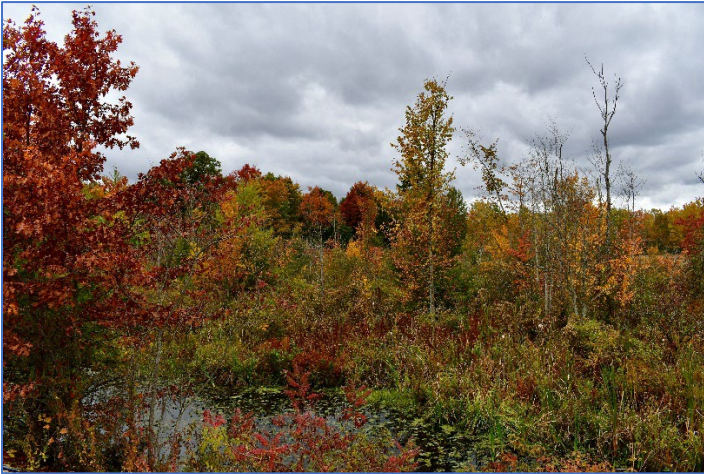
- Dark Green/No Change= peak is *three weeks to a month* away
- Light Green/Starting to Change= peak is *approximately two to three weeks* away
- Yellow/Approaching Best Color= peak is *approximately one week* away
- Orange/Best Color= foliage is *peaking this week*
- Red/Starting to Fade= still some nice color but won't last more than *a few more days*
- Brown/Past Peak= all or nearly all color *is gone*

Statewide Fall Foliage Overview

Fall color across the commonwealth continues to build, some of which is simply breathtaking. From the Appalachians to the Alleghenies, and South Mountain to the Poconos, vibrant shades await the fall foliage enthusiast. With beautiful weather expected across the state this weekend, Pennsylvania travelers won't need to go far to see the gorgeous colors adorning Penn's Woods.

Northwestern Region

The district manager in Cornplanter State Forest District (Warren, Erie counties) reported the cooler nights have brought on a splendid array of colors on the hillsides of northwestern Pennsylvania. It seems like every shade of yellow, red, and brown is represented in the forested landscape. It's a great time to get outdoors and take advantage of the autumn experience and the many opportunities to walk forested trails carpeted in newly fallen leaves! Some routes to view and enjoy the fall foliage include Route 666 from East Hickory west, Route 62 along the Allegheny River from Franklin/Oil City through Tionesta and onto Warren, routes 59 and 321 (the Longhouse National Scenic Byway), Route 8 from Oil City through Titusville and into Erie County, and routes 27 and 77 in Crawford County.



Waterford wetlands. (photo by S. Laskowski)



Field edge near Warren. (photo by S. Stelter)



Pithole Road. (photo by T. Ryen)



Crawford Forest. (photo by M. Lewis)

Northcentral Region

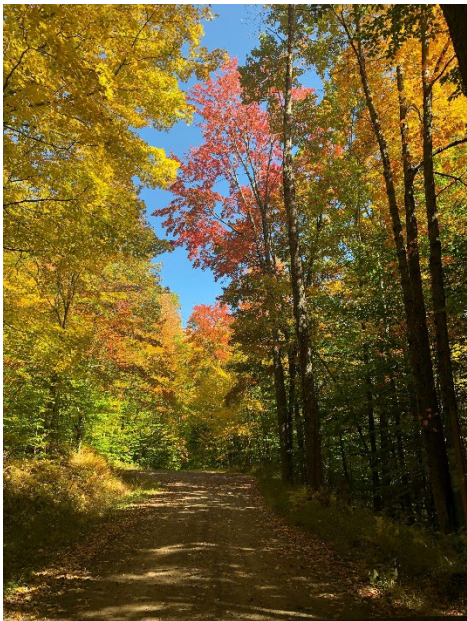
The district manager in Susquehannock State Forest (Potter, McKean counties) said maple leaves have started to fall but the color is still fantastic across the area. Color in the region has been phenomenal with some of the best seen in years. Today's rain will bring most of the maple leaves down and end the best colors in the maple dominated

forest. Black cherry is well along, showing bright yellow, and aspens and beech are progressing well too. Those colors should hold for the next week or so, and then it's on to the oaks in southern Potter and around the Kinzua Dam and Bradford in McKean County. Oaks are just starting to change and expected to peak between 10/22 and 10/29.



Forest edge in Potter County. (photo by C. Nicholas)

Foresters in Loyalsock State Forest (Lycoming, Sullivan counties) said fall color is at peak in the region now. Maples, sumac, cherry, sassafras, and huckleberries are in full color. Beech, birch, and tulip poplar are a little behind, but should be at full color by this weekend. A crowd favorite for visitation, High Knob Overlook, currently offers a spectacular view.



Two views from Painter Leetonia Road, Tioga State Forest. (photos by T. Oliver)

The Tioga County service forester said great colors are abundant in Tioga State Forest. Downtown Wellsboro is beautiful along with the eastern half of the county, including Arnot and Armenia Mountain. Lambs Lookout is a great place to view northern hardwoods, which are a gorgeous sight to see, showing some beautiful yellows and oranges. Red maples are vibrant shades of red and scarlet, and oak stands are just starting to show some signs of fall. Some of the best viewing is typically in the Pine Creek Canyon, but colors seem to be lagging in the area, currently.



Stunning view from Leonard Harrison State Park. (photo by K. Dorshimer)

Staff in Tiadaghton State Forest indicated that chilly nights have brought on major changes in the district, with peak colors expected during the forecast week. Bright fall color can be found on every district hiking trail. The Pitch Pine Ski Trail near Waterville offers some spectacular scenery.

The Clinton County service forester (Sproul State Forest) reported peak foliage in the district. Bright color from the ridgetops to the valleys can be found on red and sugar maples; even the hickories are putting on a show. Attendees of Renovo's Flaming Foliage Festival will be right on time to see some impressive fall color.



View from Beech Creek Road, Sproul State Forest. (photo by L. Greenaway)

The Elk County service forester reported peak fall color in the district but warned that today's rain will likely knock many leaves to the ground. Oaks are beginning to show nice color now and should hold on throughout the week. District visitors should consider taking the Elk Scenic Drive to not only catch sights of attractive fall color, but also to see some of Pennsylvania's majestic elk.

West-central and Southwestern Regions

The Mercer County (Clear Creek State Forest District) service forester reported a "color explosion" last week, resulting in peak fall foliage conditions. The dramatic color change was likely due to a few mild frosts. Today's rain could down many leaves, but oak forests should still display impressive color. A trip to Beartown Rocks or Dennison Point are recommended to observe some beautiful fall scenery.

In Forbes State Forest District, forestry staff said the ridges of the Laurel Highlands continue to dazzle and are currently at peak color. Areas along Chestnut Ridge are showing substantial color and within the week should be at peak. Maples, sassafras, black gum, birch, and some oaks are displaying bold yellows, reds, and orange. Most other areas in southwestern PA are quickly changing, creating vibrant scenery from ridgetop to valley. Rain and wind in the forecast could impact leaf retention.

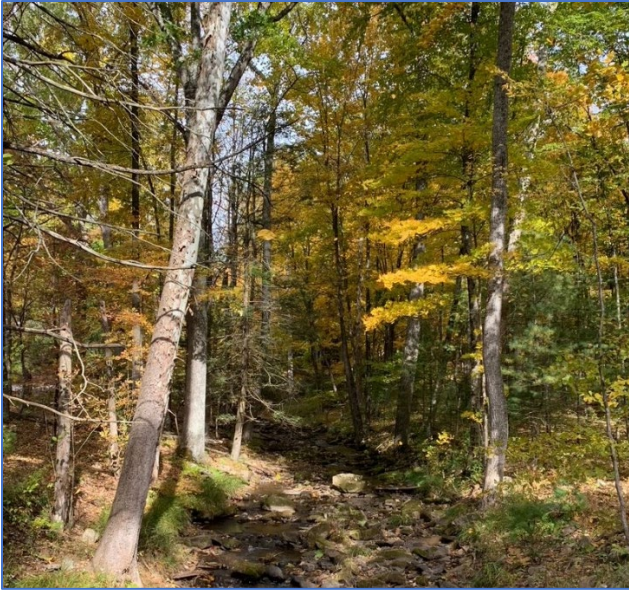


Pretty colors surround Wharton Iron Furnace in the Braddock Division, Forbes State Forest. (photo by R. Mahony)

The Gallitzin State Forest (Blair, Indiana, Cambria counties) district manager said the cooler temperatures last week have really accelerated color changes in area forests. Maples are at peak display and oaks are contributing color too. Visitors to the region should consider taking a trip on Route 56 to the Babcock Picnic Area, or just up the road to the east, a hike on the Boulder Trail.

Central and Southcentral Regions

In Bald Eagle State Forest District, the Mifflin, Juniata, and Union County service forester said most deciduous trees and shrubs are showing full color, with oaks and a few other species remaining mostly green. Visit one of the many district vistas for a panoramic view of great autumn color.



Cherry Run, Bald Eagle State Forest. (photo by J. Portzline) *Gorgeous red maple color at Milton State Park. (photo by J. Osborne)*

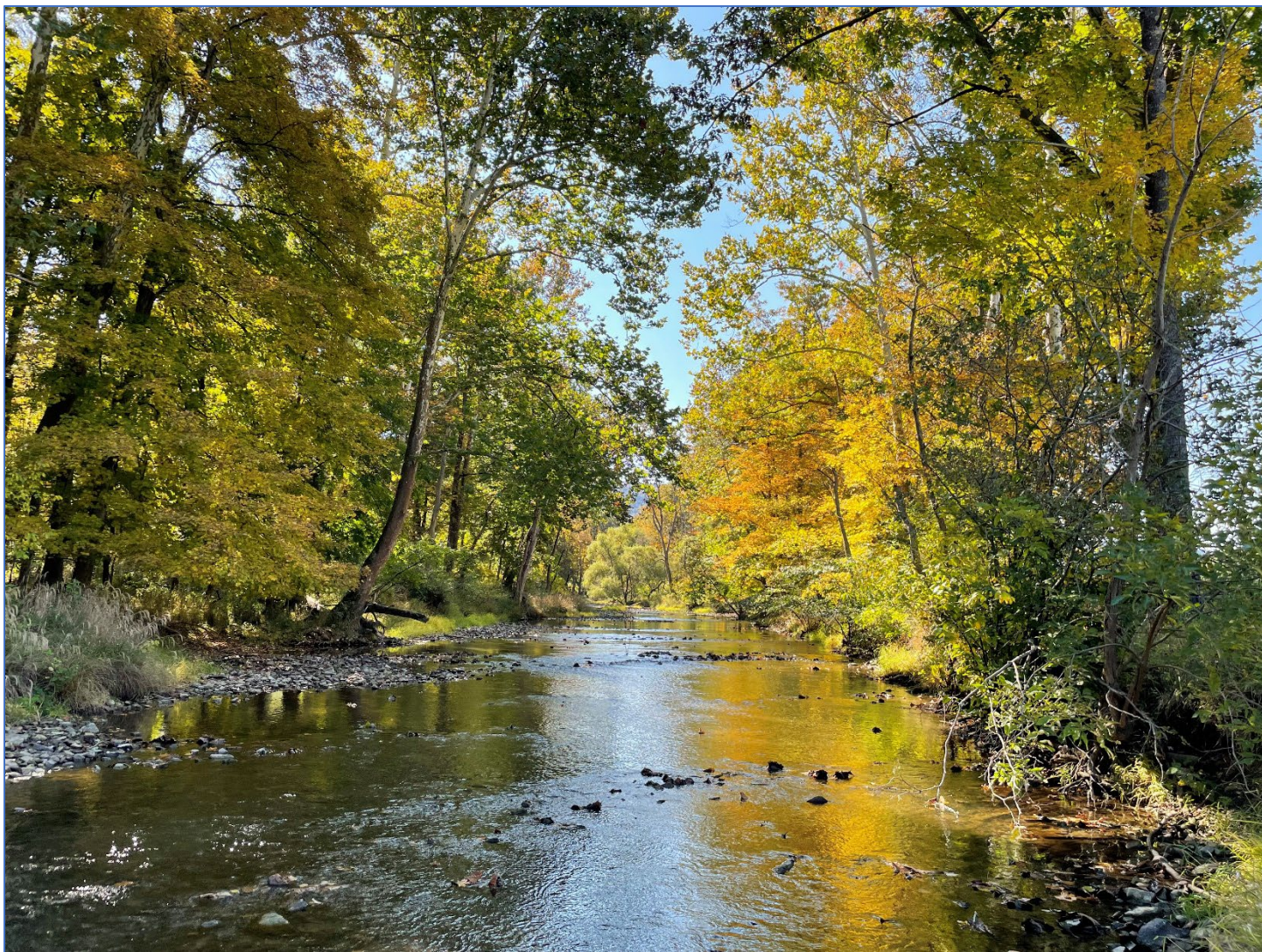


Penns Creek. (photo by J. Portzline)

Bureau of Forestry staff at the Mira Lloyd Dock Center (near Potters Mills, Centre County, in the Seven Mountains area) reported swift onset of color in the area. Peak conditions are expected during the forecast week. Colorful species to view are serviceberry, ash, white oaks, and some maples.

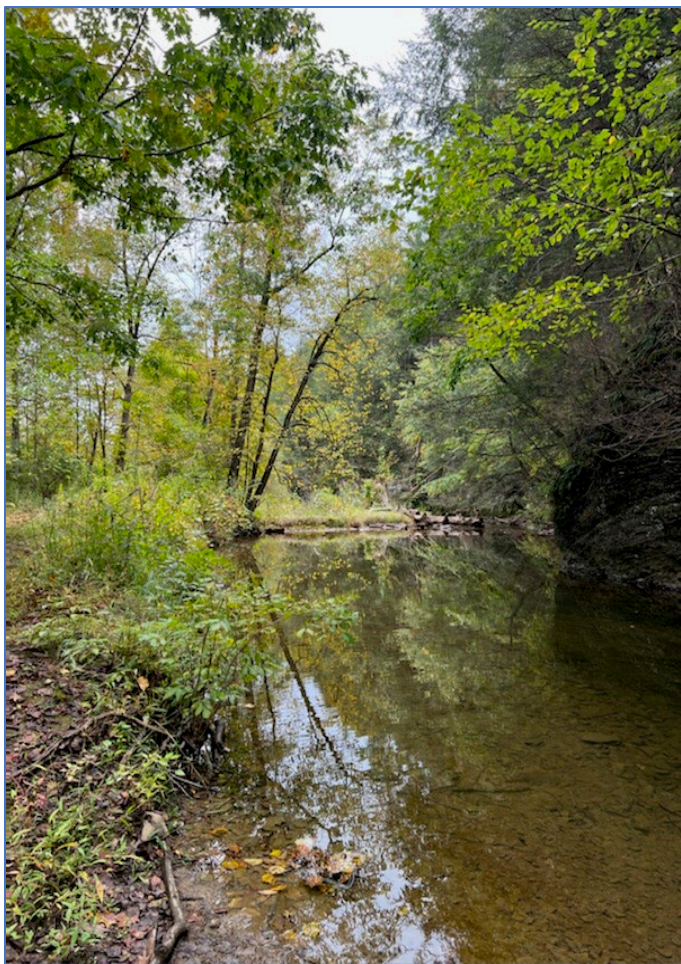
The Perry/Juniata County service forester (Tuscarora State Forest District) reported the ridges around the towns of East Waterford and Waterloo (Juniata County) are displaying good color now. Forests along Tuscarora Mountain and surrounding local towns offer diverse tree species and remarkable color contrast. Maple, gum, hickory and dogwoods are beautiful right now. A trip along a state forest road is recommended to view some excellent autumn sights.

Foresters in Buchanan State Forest (Fulton, Bedford counties) indicated considerable progress, with black gums, maples, and hickories in full color and exhibiting bright reds and yellows. This would be a great weekend to take a drive on any ridgetop road in Buchanan State Forest. Recommended drives include Broad Mountain, Aughwick, Bark, Summit, Blankley, and Martin Hill roads.



Upper photo: Tuscarora Creek. (photo by L. Book)

Lower photo: Penn Nursery irrigation pond. (photo by C. Neuffer)



Little Juniata Creek. (photo by J. Wolesslagle)

In Weiser State Forest District, area service foresters said black gum, oaks, tulip poplar, red maple, hickories, and birches are displaying an assortment of bright fall colors across the district. Northumberland, Montour, Schuylkill, Columbia, and Carbon counties are approaching best color. Foliage colors will be at peak in the next seven to ten days. In Dauphin and Lebanon counties, most of the lowlands are still in early stages but drier sights and north-facing slopes are further along. Black walnut trees are especially colorful now, showing bright yellow.

Foresters in Michaux State Forest District expect colors to peak late in the forecast week and extending into the following week. Black gum, red maple, sassafras, and yellow poplar are all very colorful now. Ridge Road is a beautiful recommended drive in the area. Sightseers should also consider visiting the Long Pine Connector or Yellow Ridge Trail for some great scenery.

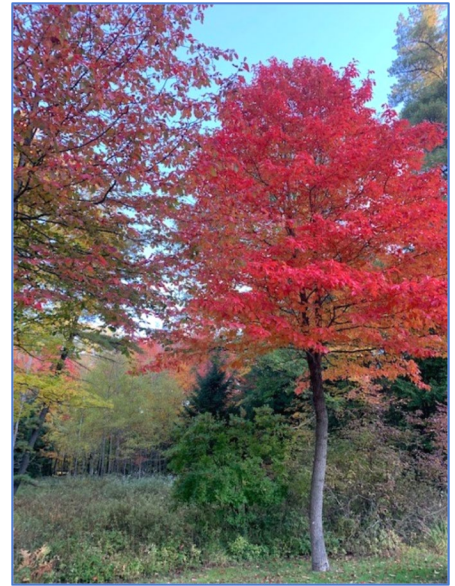
The Huntingdon County service forester said peak color is coming soon to Rothrock State Forest. Some oaks are just starting to change but hardwoods like birch, red and sugar maple, hickory, and others are displaying great color now. The northern portion of Rothrock (near State College) and higher elevations in the district are currently the best areas to observe some spectacular autumn views.

Moshannon State Forest staff (Clearfield County) reported that the area is at peak, currently. Oaks are beginning to turn yellow and red in clumps and on the tips of branches. Still-green oaks provide a nice contrast with the brighter colors of others. Red maples are a vibrant scarlet and orange and sugar maples and birches have turned bright yellow. Sassafras and black gum continue their show, turning yellow/orange and deep red, respectively. A recommended auto tour is the Elk Scenic Drive on routes 153, 255, 555, 120, and 879. Also, be sure to



Bright birches on Hidden Cabin Trail, Roaring Creek Tract, Northumberland Co. (photo by A. Brought)

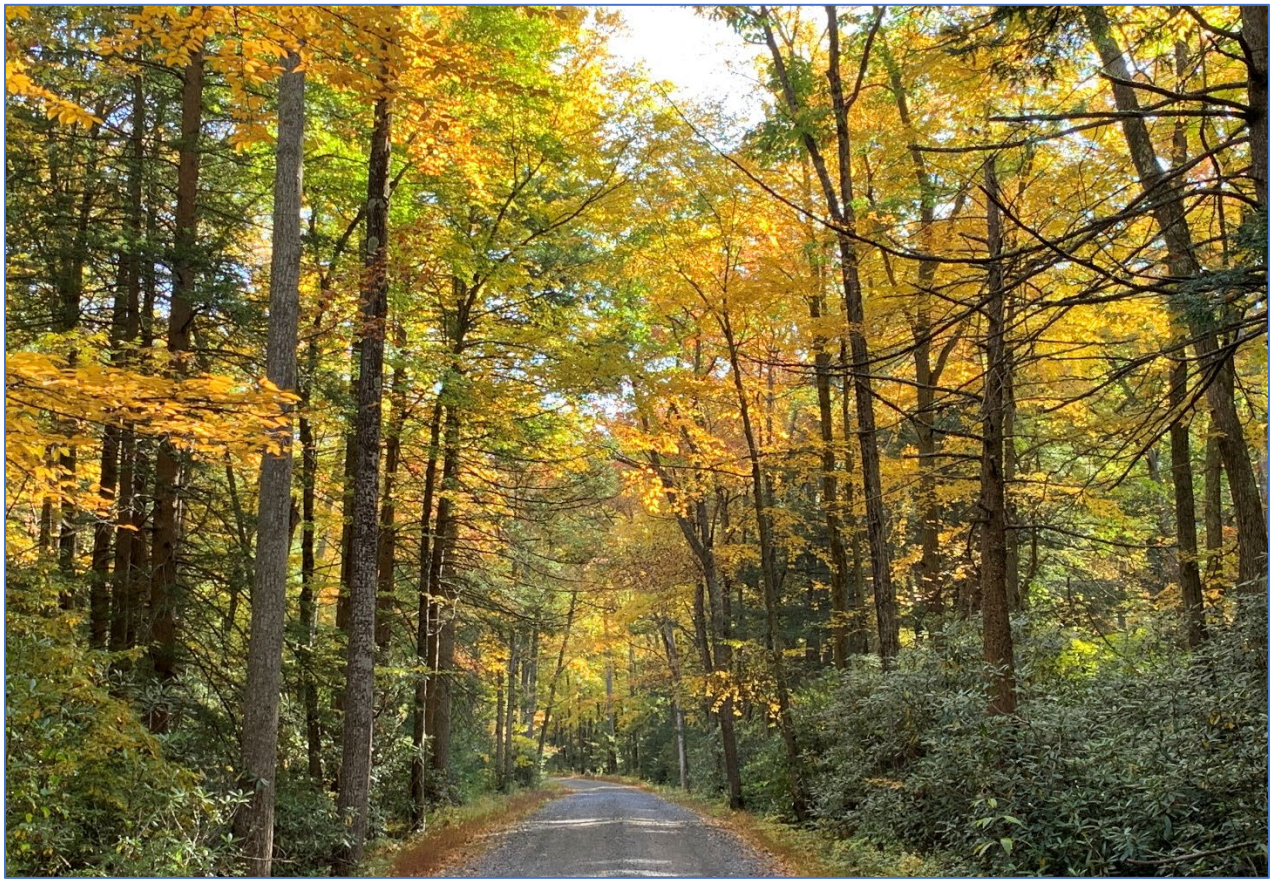
check out Parker Dam, S.B. Elliott, and Black Moshannon State parks where water features and the forest create postcard-like settings.



L: Laurel Run Road, Moshannon State Forest. (photo by B. Wilson) R: Vibrant black gum, Moshannon State Forest. (photo by Z. Miller)



Ridge Road, Michaux State Forest. (photo by T. Bechtel)



Crowfield Road, southern Centre County, Rothrock State Forest. (photo by J. Thompson)



Akersville Road, Buchanan State Forest. (photo by K. Ewan)

Northeastern Region

The Delaware State Forest (Pike, Monroe counties) service forester said areas north of US 80 are showing the best fall colors in the district. Additionally, routes 209, 390 and 402 are great places to see the fall display. Red maples have turned red, burgundy, and orange, with sugar maples showing vibrant yellow. Hickories are displaying their maximum golden-brown color, currently. Oaks continue to lose their green color and are starting to turn light shades of yellow and brown, and highbush blueberry is showing wonderful red and purple.



Pine Hill Vista, Pinchot State Forest. (photo by A. Noguera)

Foresters in Pinchot State Forest said Susquehanna and northern Wayne counties are starting to fade but still have attractive color. In Lackawanna, Wyoming, and southern Wayne counties, leaves are entering peak phase with most maples, birches, and cherries in full color. Understory plants like blueberry are showing a vivid, deep red color. Oaks and beeches are starting to change in these areas as well. In Luzerne County, ridgetop areas are exhibiting the most substantial changes in northern hardwoods. Black gums, aspens, and sassafras are popping through the canopy with warm red, yellow, and orange colors. Visitors to the region should see the Moosic Mountain, Thornhurst, Elmhurst, and Brownell Reservoir tracts of the state forest for some impressive fall color. Recommended state parks to consider visiting in the area include Salt Springs, Prompton, Lackawanna, and Varden.

Southeastern Region

Foresters in William Penn State Forest district indicated notable progress in the northern Bucks and Lehigh areas. Maples are showing red and yellow, and most hickories and black walnuts are bright yellow. Dogwoods are vibrant, but the oaks have remained relatively unchanged. Colors are still in early stages along US 78 and Blue Mountain. Berks and Montgomery counties are still mostly green, but some early species are showing signs of the season.