

Moshannon State Forest Simon B. Elliott State Park Snowmobile Trails

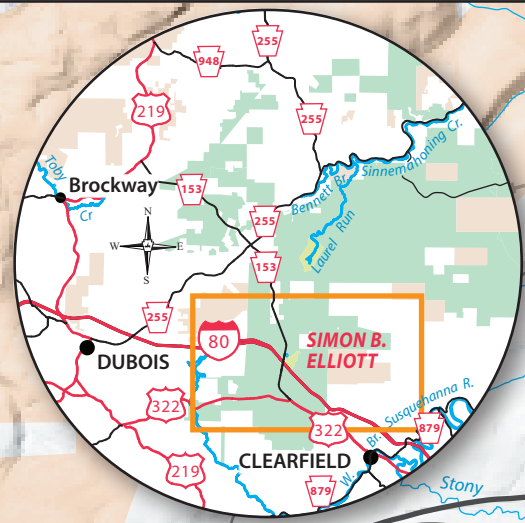
CLEARFIELD COUNTY, PENNSYLVANIA



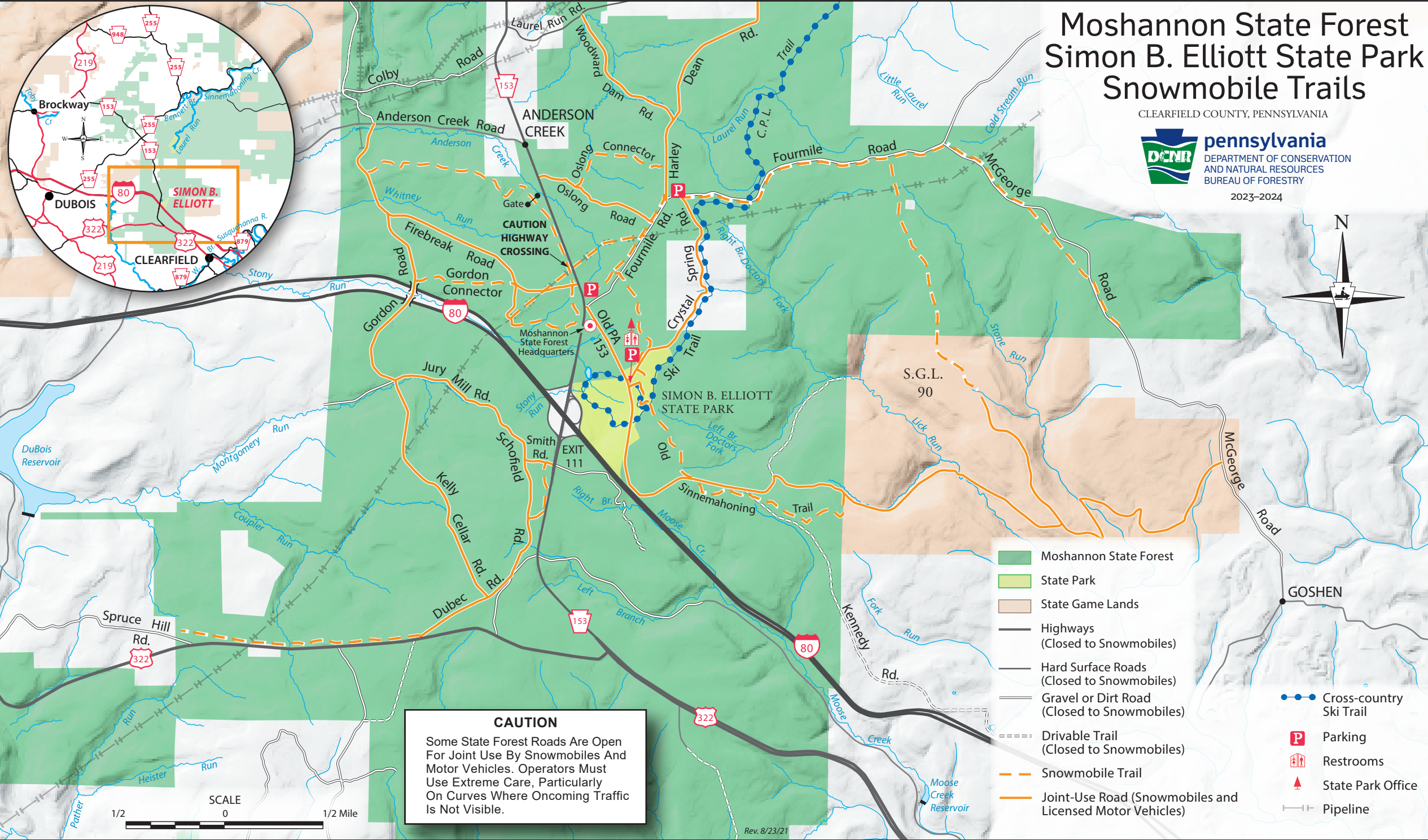
pennsylvania

DEPARTMENT OF CONSERVATION
AND NATURAL RESOURCES
BUREAU OF FORESTRY

2023-2024



To Dubois, 10 Miles



CAUTION
Some State Forest Roads Are Open For Joint Use By Snowmobiles And Motor Vehicles. Operators Must Use Extreme Care, Particularly On Curves Where Oncoming Traffic Is Not Visible.

- Moshannon State Forest
- State Park
- State Game Lands
- Highways (Closed to Snowmobiles)
- Hard Surface Roads (Closed to Snowmobiles)
- Gravel or Dirt Road (Closed to Snowmobiles)
- Drivable Trail (Closed to Snowmobiles)
- Snowmobile Trail
- Joint-Use Road (Snowmobiles and Licensed Motor Vehicles)
- Cross-country Ski Trail
- Parking
- Restrooms
- State Park Office
- Pipeline



Rev. 8/23/21

To Clearfield, 2.6 Miles