

OUTSTANDING GEOLOGIC FEATURE OF PENNSYLVANIA

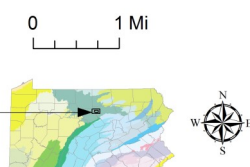
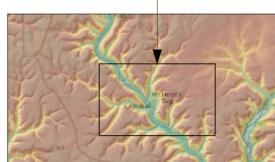
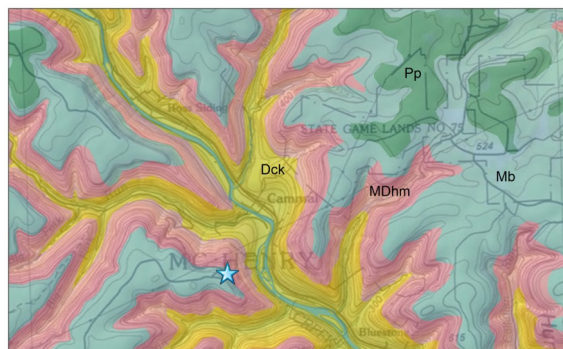
LEBO VISTA, LYCOMING COUNTY

Stuart O. Reese, 2016



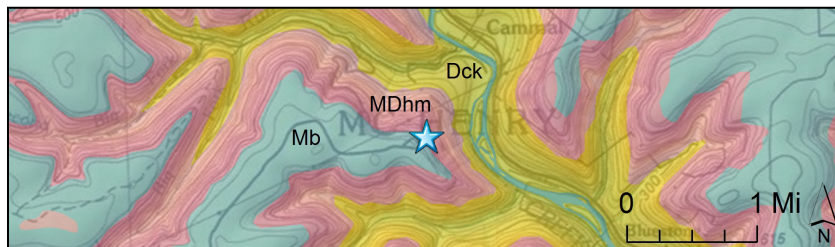
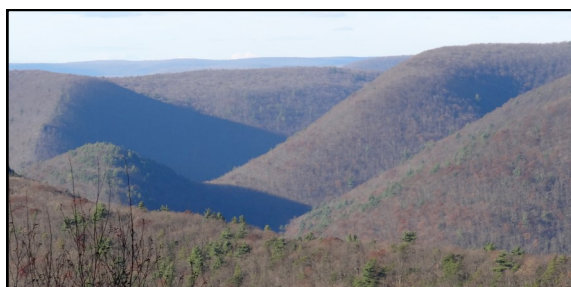
Location

Tiadaghton State Forest, Lycoming Co., McHenry Twp.,
lat: 41.39013, lon: -77.46864 (parking); Cammal 7.5-minute
quadrangle



Geology

The Tiadaghton State Forest destination of Lebo Vista presents a panoramic view across a southern portion of [Pine Creek Gorge](#), the Pennsylvania Grand Canyon. Located in the Deep Valleys section of the Appalachian Plateaus physiographic province, Pine Creek descends the plateau toward the West Branch Susquehanna River to the south. Bedrock in the area is composed of broadly folded to flat-lying sedimentary rocks such as conglomerate, sandstone, siltstone, and shale. Resistant sandstone and conglomerate of the Pottsville Formation (Pp) of Pennsylvanian age underlie the highest terrain. At and across from the vista, the summits are capped mostly by Mississippian-age Burgoon Sandstone (Mb). Slopes are made of softer rocks, including the Mississippian- and Devonian-age Huntley Mountain Formation (MDhm) on the upper slopes and reddish shales and sandstones of the Devonian Catskill Formation (Dck) on the lower slopes and in the valley bottoms. Vista visitors must travel several miles on unpaved state forest roads off of Pa. Route 44.



View to the northeast from Lebo Vista, approximately 1,875 feet in elevation, as shadows begin to fill the gorge on a November afternoon. Village of Cammal is located in the valley to the left, where Mill Run flows from the north into Pine Creek. The valley floor is about 1,200 feet below the vista. Upper left: Distinctive topography of the Deep Valleys physiographic section at Mill Run. Upper right: The slow but relentless headward erosion of Pine Creek tributaries continues to eat away at the extent of the Burgoon Sandstone (Mb).

Recommended Reading

Braun, Duane, ed., 2011, Glacial deposits, landforms, and drainage diversions in the “Grand Canyon” region of north-central Pennsylvania: Annual Reunion of the Northeastern Friends of the Pleistocene and Harrisburg Area Geologic Society/ Association of Environmental & Engineering Geologists (NEFOP/HAGS/AEG), 74th, [Field Trip Guidebook](#), 68 p.

[Tiadaghton State Forest](#) web page of DCNR.