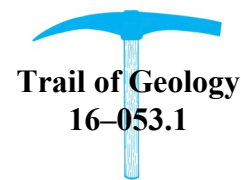


OUTSTANDING GEOLOGIC FEATURE OF PENNSYLVANIA

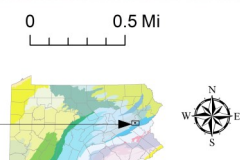
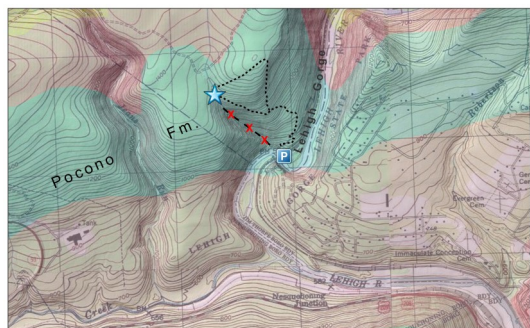
GLEN ONOKO, CARBON COUNTY

Stuart O. Reese, 2016



Location

PA State Game Lands 141, Carbon County, Lehigh Twp.,
lat: 40.88361, lon: -75.76028 (parking); lat: 40.88820,
lon: -75.76712; Weatherly 7.5-minute quadrangle

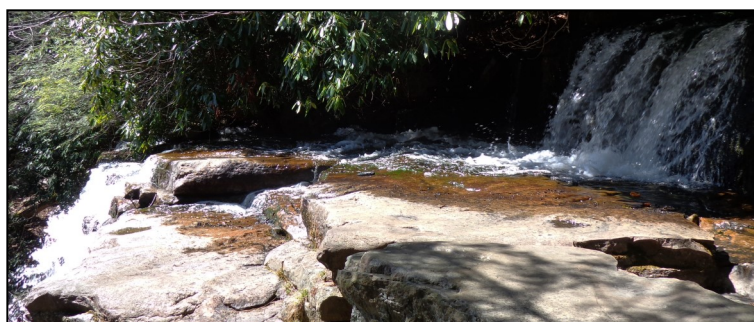
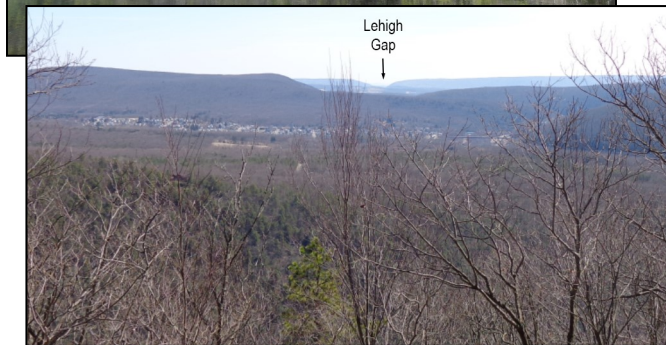
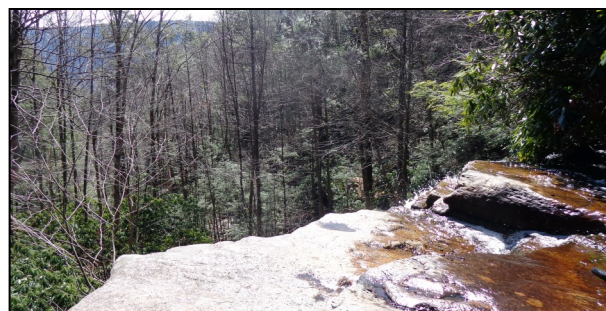
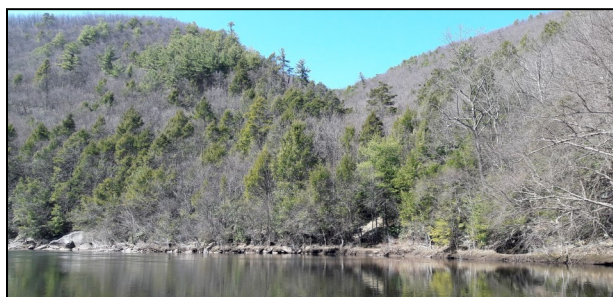


Geology

Glen Onoko is a rugged, narrow, steep-walled side ravine in the Lehigh Gorge. The small Glen Onoko Run, draining about 1.2 square miles of forested land, cascades down the ravine to the Lehigh River below.

Because of failing, hazardous conditions, the Glen Onoko trail was closed to hiking in 2019. The adjacent Overlook trail (black dotted line on map) is open to the top of the glen and its upper falls. Along the way, hikers glimpse spectacular views of Lehigh Gorge, the nearby town of Jim Thorpe, and Lehigh Gap in Blue Mountain (11 miles to the southeast). Total relief on the trail is about 885 feet.

Large blocks and boulders of resistant Mississippian Pocono Formation are everywhere on the hillside and mountain top. Sandstone and conglomerate with rounded to angular, white quartz pebbles are the dominant rock types. The rocks are tilted 10 to 20 degrees to the southeast in the section known as the Anthracite Upland of the Ridge and Valley physiographic province.



Top: View to the north of the Onoko ravine from the Lehigh River. Bottom: View to the southeast from the Overlook trail.

Views at the top of Glen Onoko of the upper falls showing jointing and layering in the bedrock of the Pocono Formation.

Recommended Reading

Inners, J. D., 1998, Rocks and ruins of the “Upper Grand”—An illustrated trail guide to the geology and historical archeology of Lehigh Gorge State Park, northeastern Pennsylvania: Pennsylvania Geological Survey, 4th ser., Trail of Geology 16-114.0, 62 p.

Lehigh Gorge State Park web page of DCNR.