

OUTSTANDING GEOLOGIC FEATURE OF PENNSYLVANIA

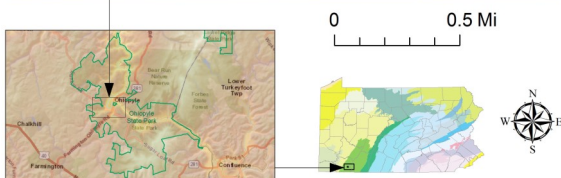
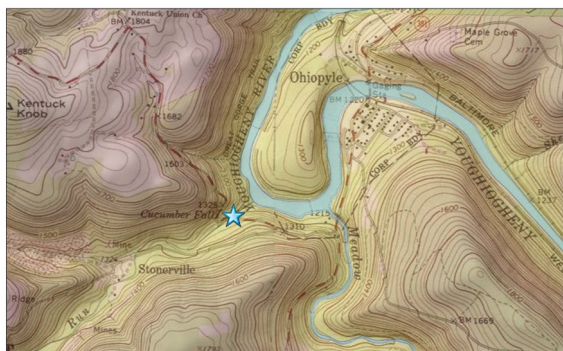
CUCUMBER FALLS, FAYETTE COUNTY

Stuart O. Reese, 2016



Location

Ohiopyle State Park, Fayette Co., Stewart Twp., lat: 39.8634, lon: -79.5024; Fort Necessity 7.5-minute quadrangle



Geology

Cucumber Falls is a picturesque waterfall on Cucumber Run in Ohiopyle State Park. Cucumber Run is a tributary to the Youghiogheny River, which is about 30 feet lower in elevation and 400 feet downstream from the falls. The stream plunges about 30 feet over a resistant lip of coarse-grained sandstone of the Allegheny Formation. Beneath the sandstone, softer finer grained rocks, including shale and a thin coal bed, are visible. The Allegheny Formation is an important coal-bearing formation in western Pennsylvania.

Cucumber Run flows to the northeast to a tight meander of the Youghiogheny River. The site is located off Kentuck road at the southern end of the park and near the park's Great Gorge Trail. Kentuck road intersects Pa. Route 381 just south of the [Ohiopyle Falls](#) and the borough of Ohiopyle.

Recommended Reading

Bushnell, Kent, 1971, Ohiopyle State Park—Geologic features of interest: Pennsylvania Geological Survey, 4th ser., [Trail of Geology 16-007.0](#), 3 p.



Photograph of Cucumber Falls (left) after an intense thunderstorm on July 6, 2001. Photograph above is from mid-summer in the early 1980s under normal flow conditions. Photographs by Jim Shaulis, Pennsylvania Geological Survey.