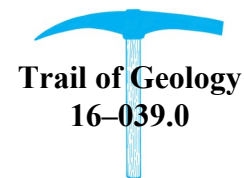


OUTSTANDING GEOLOGIC FEATURE OF PENNSYLVANIA

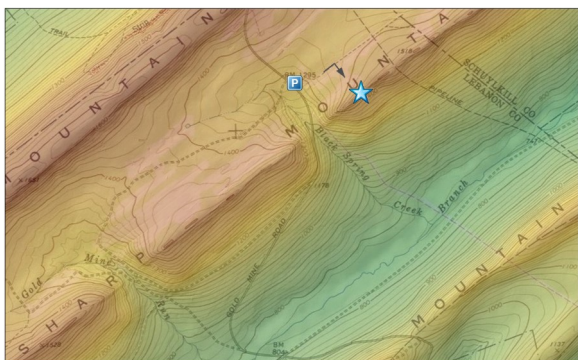
CHINESE WALL, LEBANON AND SCHUYLKILL COUNTIES

Stuart O. Reese, 2016



Location

State Game Lands 211, Lebanon County, Cold Spring Twp.,
lat: 40.54499, lon: -76.53548 (parking); lat: 40.5442, lon: -76.5299;
Tower City 7.5-minute quadrangle



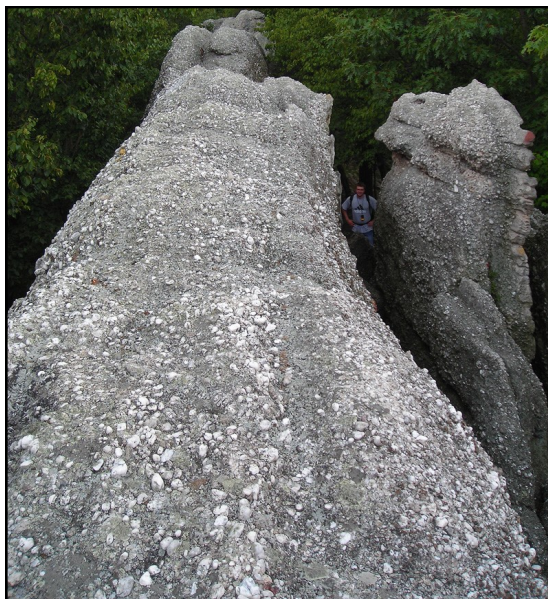
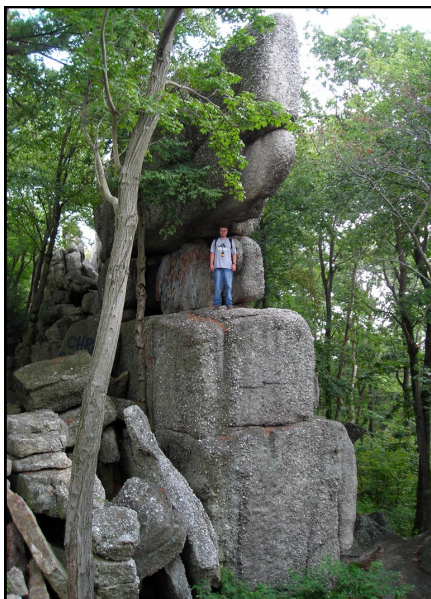
0 0.5 Mi



Geology

Chinese Wall, also known as High Rocks and Boxcar Rocks, is located off of Gold Mine Road on State Game Lands 211 in Lebanon County. It is a prominent outcrop of quartz-pebble conglomerate of the Pottsville Formation; it is more than 60 feet high and extends for about 0.6 mile into Schuylkill County to the northeast. It is composed of large, discrete blocks of rock that were established by widely spaced joints at nearly right angles. The top of the “wall” is more weathered and narrower. On the surface, quartz pebbles stand out in relief and give the rock a rough texture. Some conglomerate layers contain quartz cobbles over 2 inches long.

The conglomerate of the Pottsville is a conspicuous rock in the region with its very visible large, white quartz pebbles. The rocks were deposited in near sea-level streams and rivers during the Pennsylvania Period, about 300 million years ago. At that time, Pennsylvania was situated near the equator.



Photographs from left to right show the blocky nature of the Pottsville, its coarseness and weathering at the top, and the view northeast along the wall. Photographs by Kevin Tarbert and Michael Techky, Pennsylvania Geological Survey interns. To reach the site from the parking area, follow the gravel road about 0.2 mile to latitude 40.54614 and longitude -76.5321, then follow the unmarked trail uphill to the southeast about 0.2 mile.

