



Quilt/Rug Trail

Tuscarora State Forest

40°18'11" (N) 77°35'21" (W)



For more information

Visit our website

www.dcnr.state.pa.us/forestry

or contact

Tuscarora State Forest

4455 Big Spring Rd.

Blain, PA 17006

717-536-3191

FD03@pa.gov

The first “Trail Rug” of the PA Quilt Trails and National Quilt Trail was unveiled in July of 2011. The mural can be found at the Tuscarora State Forest office. The “Trail Rug” design was selected from one of Magdalena (Briner) Eby’s hook rugs from the late 1800’s to early 1900’s. Magdalena (Briner) Eby was from this area and lived for a time on property that is now part of the Tuscarora State Forest.



Bryner Road House

Tuscarora State Forest

40°18'04" (N) 77°35'31" (W)



For more information

Visit our website

www.dcnr.state.pa.us/forestry

or contact

Tuscarora State Forest

4455 Big Spring Rd.

Blain, PA 17006

717-536-3191

FD03@pa.gov

This house was part of the Briner family farm. They had the same name as the road but a different spelling.



John Eby House

Tuscarora State Forest

40°17'43.6" (N) 77°36'4.6" (W)



For more information

Visit our website

www.dcnr.state.pa.us/forestry

or contact

Tuscarora State Forest

4455 Big Spring Rd.

Blain, PA 17006

717-536-3191

FD03@pa.gov

This is the house of John Eby, who was a German Baptist Elder. Since there were no churches in the area, the house was built to accommodate services.



Eby Mud House

Tuscarora State Forest

40°17'43.2" (N) 77°36'28.9" (W)



This dwelling was about 1.5 miles west of the John Eby house. The building was called the mud house because of its construction. It was built with logs and stucco. Jacob Eby and his wife Magdalena (Briner) lived here for two years before his death. She was famous for her hooked rug designs. A painting of her “Great- Granddaughter’s Rug” hangs on the exterior wall of the Wildfire Equipment & Maintenance building at the Tuscarora State Forest Office.

For more information

Visit our website

www.dcnr.state.pa.us/forestry

or contact

Tuscarora State Forest

4455 Big Spring Rd.

Blain, PA 17006

717-536-3191

FD03@pa.gov





Eby Cemetery

Tuscarora State Forest

40°17'28.9" (N) 77°36'16.9" (W)



For more information

Visit our website

www.dcnr.state.pa.us/forestry

or contact

Tuscarora State Forest

4455 Big Spring Rd.

Blain, PA 17006

717-536-3191

FD03@pa.gov

The Eby Cemetery is located along SR274 west of New Germantown. It was part of John Eby's 393 acre farm. He was a member of the German Baptist Church. It was adjacent to a small community known as Centerville in those days.



Old Robinson House & Barn

Tuscarora State Forest

40°16'52" (N) 77°37'19" (W)



The Old Robinson place is one of the original farm houses in the western end of Sherman's Valley.

For more information

Visit our website

www.dcnr.state.pa.us/forestry

or contact

Tuscarora State Forest

4455 Big Spring Rd.

Blain, PA 17006

717-536-3191

FD03@pa.gov





Beaston Camp Spring House

Tuscarora State Forest

40°16'41" (N) 77°37'11" (W)



For more information

Visit our website

www.dcnr.state.pa.us/forestry

or contact

Tuscarora State Forest

4455 Big Spring Rd.

Blain, PA 17006

717-536-3191

FD03@pa.gov

This spring house was a typical design used in western Perry County during its early settlement. The farms used spring houses for their water supply.



Hickory Ridge Demo Area

Tuscarora State Forest

40°16'12" (N) 77°37'27" (W)



For more information

Visit our website

www.dcnr.state.pa.us/forestry

or contact

Tuscarora State Forest

4455 Big Spring Rd.

Blain, PA 17006

717-536-3191

FD03@pa.gov

This site is used as an educational tool. It is a Forest Stewardship Demonstration area. The district invites fourth grade classes and home school students every spring. They learn about forestry, insects, fire, wood products, forest history, wildlife and road maintenance equipment. This site is open for public use as well.



McCaskey Graves

Tuscarora State Forest

40°15'30" (N) 77°38'37.4" (W)



The McCaskey Grave site is where John McCaskey and his wife were buried, upon request. John McCaskey is the founder of the Hemlocks Natural Area here in the state forest. This location is where the sun's rays first hit Perry County.

For more information

Visit our website

www.dcnr.state.pa.us/forestry

or contact

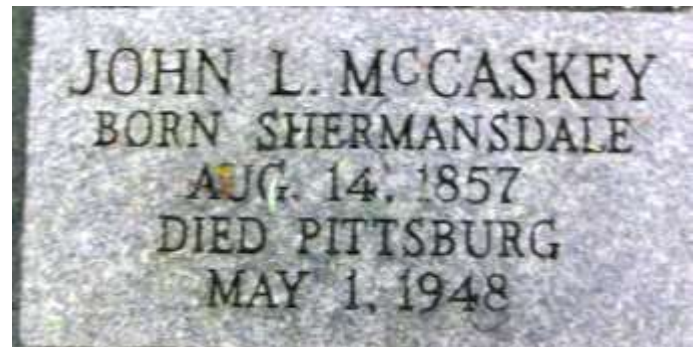
Tuscarora State Forest

4455 Big Spring Rd.

Blain, PA 17006

717-536-3191

FD03@pa.gov





Big Spring

Tuscarora State Forest

40°15'51" (N) 77°39'33.9" (W)



For more information

Visit our website

www.dcnr.state.pa.us/forestry

or contact

Tuscarora State Forest

4455 Big Spring Rd.

Blain, PA 17006

717-536-3191

FD03@pa.gov

This spring is one of the largest springs in Perry County. Water from the spring flows into Sherman's Creek. The spring was used as a resting area years ago.



Big Spring Picnic Area

Tuscarora State Forest

40°15'51" (N) 77°39'33.9" (W)



For more information

Visit our website

www.dcnr.state.pa.us/forestry

or contact

Tuscarora State Forest

4455 Big Spring Rd.

Blain, PA 17006

717-536-3191

FD03@pa.gov

Big Spring Park became Big Spring Picnic area in 2005. There are five pavilions with the largest one able to hold up to 100 people. There are several trails that are accessible from the picnic area.



Railroad Tunnel

Tuscarora State Forest

40°15'43.2 " (N) 77°39'9.6" (W)

This tunnel was created to expand the Pennsylvania Railroad from New Germantown to Franklin County. In 1893, the Path Valley Railroad Company was chartered and grading commenced. With excavation in Conococheague Mountain, large conglomerates of stone crumbled, and then caused the collapsing of the newly blasted tunnel. A second attempt also failed and the tunnel was left as a simple hole. This tunnel was not to be the link westward for Perry County.

For more information

Visit our website

www.dcnr.state.pa.us/forestry

or contact

Tuscarora State Forest

4455 Big Spring Rd.

Blain, PA 17006

717-536-3191

FD03@pa.gov





Hickory Ridge Vista

Tuscarora State Forest

40°15'53" (N) 77°37'52.3" (W)



For more information

Visit our website

www.dcnr.state.pa.us/forestry

or contact

Tuscarora State Forest

4455 Big Spring Rd.

Blain, PA 17006

717-536-3191

FD03@pa.gov

In the foreground is our education and demonstration area, Hickory Ridge. Sherman's Valley, the town of New Germantown and Conococheague Mountain are in the background.



The Hemlocks Natural Area

Tuscarora State Forest

40°15'17" (N) 77°37'59" (W)



For more information

Visit our website

www.dcnr.state.pa.us/forestry

or contact

Tuscarora State Forest

4455 Big Spring Rd.

Blain, PA 17006

717-536-3191

FD03@pa.gov

This area was preserved for posterity as a State Forest Natural Area and was designated as a National Natural Landmark by the National Park Service in 1973. It is a stand of virgin hemlock trees. We have had to enter it into a treatment program to protect the trees from the Hemlock Woolley Adelgid. The adelgid is an invasive insect that has slowly been killing our state tree.



Shelters

Tuscarora State Forest



Shelter 1 ↑

40°15'59.6" (N) 77°35'8.7" (W)



Shelter 2 ↑

40°15'30.3" (N) 77°35'46.6" (W)



Shelter 3 ↑

40°14'48.6" (N) 77°36'37.5" (W)

For more information

Visit our website

www.dcnr.state.pa.us/forestry

or contact

Tuscarora State Forest

4455 Big Spring Rd.

Blain, PA 17006

717-536-3191

FD03@pa.gov

These are shelters for a one night stop over. They were built for hikers using the Tuscarora Trail, but anyone can use them. They are maintained by volunteers.



Showaker

Tuscarora State Forest

40°15'48.6" (N) 77°33'46.3" (W)



The Big Spring CCC Camp was in use from 1933 to 1941. Company 1382, consisting of two hundred men, moved here in June of 1933 and set up in tents. Within four months the entire company was housed in wooden barrack buildings. There are only two buildings remaining from the entire camp.

For more information

Visit our website

www.dcnr.state.pa.us/forestry

or contact

Tuscarora State Forest

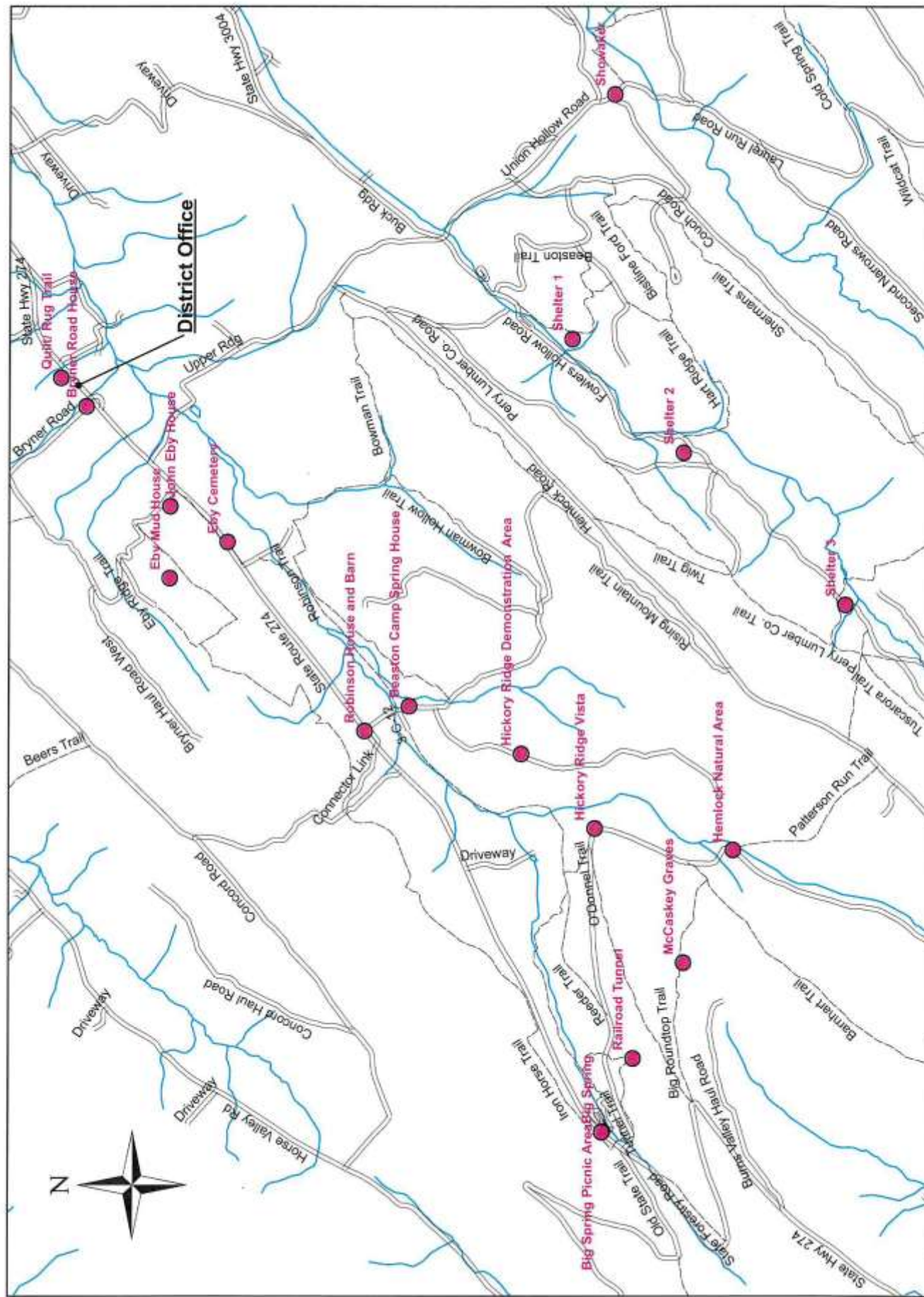
4455 Big Spring Rd.

Blain, PA 17006

717-536-3191

FD03@pa.gov







Dead Man's Curve

Tuscarora State Forest

40°15'47.3" (N) 77°31'26.2" (W)



For more information

Visit our website

www.dcnr.state.pa.us/forestry

or contact

Tuscarora State Forest

4455 Big Spring Rd.

Blain, PA 17006

717-536-3191

FD03@pa.gov

A Civilian Conservation Corps' worker was killed at this location in 1934. They were constructing Bower Mountain Road.



Plane Crash Site

Tuscarora State Forest

40°13'0.1" (N) 77°33'26.7" (W)



For more information

Visit our website

www.dcnr.state.pa.us/forestry

or contact

Tuscarora State Forest

4455 Big Spring Rd.

Blain, PA 17006

717-536-3191

FD03@pa.gov

This is the site where a military cargo
airlift plane crashed on 10-26-1956.
There were no survivors.



Henry's Valley Vista

Tuscarora State Forest

40°14'8" (N) 77°33'52" (W)



For more information

Visit our website

www.dcnr.state.pa.us/forestry

or contact

Tuscarora State Forest

4455 Big Spring Rd.

Blain, PA 17006

717-536-3191

FD03@pa.gov

Henry's Valley was the location of the small community of Pandemonium. It was named for one of the first settlers. This vista is off of Laurel Run Rd.



Three Square Hollow Spring

Tuscarora State Forest

40°12'22" (N) 77°33'57" (W)



For more information

Visit our website

www.dcnr.state.pa.us/forestry

or contact

Tuscarora State Forest

4455 Big Spring Rd.

Blain, PA 17006

717-536-3191

FD03@pa.gov

One of the many springs in our district. It is located on Three Square Hollow Rd. on the south side of the mountain.



Three Square Hollow Vista

Tuscarora State Forest

40°13'02" (N) 77° 32'42" (W)



For more information

Visit our website

www.dcnr.state.pa.us/forestry

or contact

Tuscarora State Forest

4455 Big Spring Rd.

Blain, PA 17006

717-536-3191

FD03@pa.gov

This panoramic southward view looks out over Cumberland Valley. The town of Newburg, many scenic farm fields and the South Mountain are included in the view.



Frank E. Masland Jr. Natural Area

Tuscarora State Forest

40°14'47.1" (N) 77°31'2.4" (W)



For more information

Visit our website

www.dcnr.state.pa.us/forestry

or contact

Tuscarora State Forest

4455 Big Spring Rd.

Blain, PA 17006

717-536-3191

FD03@pa.gov

This Natural Area was dedicated to Masland in May of 1980 because he did a lot of work to conserve our natural resources. This tract of land is 1270 acres and there are several hiking trails to explore. You can access it from Laurel Run Road or Bower Mountain Road.



Pioneer Cemetery

Tuscarora State Forest

40°16'43" (N) 77°27'52" (W)



This cemetery was the burial ground for the small community of Pandemonium. The community was here from 1787-1912.

For more information

Visit our website

www.dcnr.state.pa.us/forestry

or contact

Tuscarora State Forest

4455 Big Spring Rd.

Blain, PA 17006

717-536-3191

FD03@pa.gov





Henry's Valley Steam Tannery

Tuscarora State Forest

40°16'36" (N) 77°27'47" (W)



This tannery was part of a community called Pandemonium. The tannery was in operation from 1840 to 1880.

For more information

Visit our website

www.dcnr.state.pa.us/forestry

or contact

Tuscarora State Forest

4455 Big Spring Rd.

Blain, PA 17006

717-536-3191

FD03@pa.gov





Doubling Gap Vista

Tuscarora State Forest

40°17'11.2" (N) 77°28'12.5" (W)



For more information

Visit our website

www.dcnr.state.pa.us/forestry

or contact

Tuscarora State Forest

4455 Big Spring Rd.

Blain, PA 17006

717-536-3191

FD03@pa.gov

Ahead are the double gaps formed by the Blue Mountain. This ridge extends from the Hudson River in New York to the Great Smokey Mountains of North Carolina and Tennessee.



Landisburg CCC Camp

Tuscarora State Forest

40°16'50.9" (N) 77°27'37" (W)



For more information

Visit our website

www.dcnr.state.pa.us/forestry

or contact

Tuscarora State Forest

4455 Big Spring Rd.

Blain, PA 17006

717-536-3191

FD03@pa.gov

This camp was constructed by Company 1378 in 1933. They resided in this camp until they were disbanded in 1936. Company 5454 then moved in until 1937. All that remains of the camp, is one cabin, and that is now a leased camp.



Wagon Wheel Shelter

Tuscarora State Forest

40°16'2.5" (N) 77°24'51.9" (W)



For more information

Visit our website

www.dcnr.state.pa.us/forestry

or contact

Tuscarora State Forest

4455 Big Spring Rd.

Blain, PA 17006

717-536-3191

FD03@pa.gov

The PATC maintains the Tuscarora Trail as well as the Appalachian Trail. This shelter is one of four in our district. You will find this shelter located at a junction of five trails above Colonel Denning State Park, called the wagon wheel. One of which is the Tuscarora Trail. The shelter is available for anyone hiking the trails on a first come first serve basis.



Flat Rock Vista

Tuscarora State Forest

40°15'16" (N) 77°24'48.2" (W)



For more information

Visit our website

www.dcnr.state.pa.us/forestry

or contact

Tuscarora State Forest

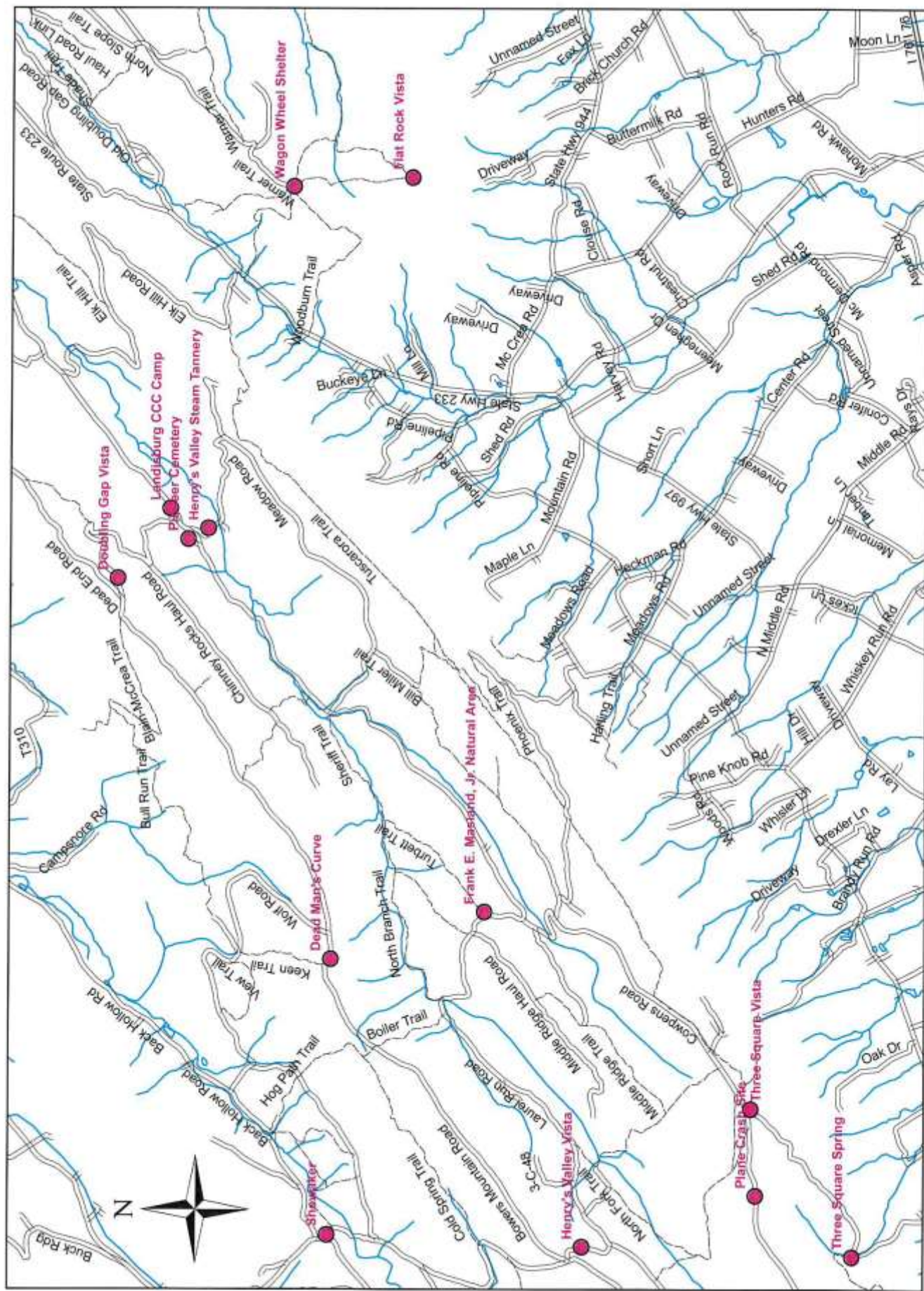
4455 Big Spring Rd.

Blain, PA 17006

717-536-3191

FD03@pa.gov

Enjoy a pleasant but challenging hike to see this beautiful view. This is our most popular vista view. Cumberland County spreads out before you and South Mountain can be seen in the distance. The trailhead for Flat Rock Trail is located in Colonel Denning State Park.





Sulfur Spring

Tuscarora State Forest

40°19'54.6" (N) 77°35'51" (W)



This spring is located in Horse Valley, along the Narrow Gauge Trail, and lives up to its name. The water from this spring contains sulfur and has that distinctive rotten egg smell.

For more information

Visit our website

www.dcnr.state.pa.us/forestry

or contact

Tuscarora State Forest

4455 Big Spring Rd.

Blain, PA 17006

717-536-3191

FD03@pa.gov





East Waterford CCC Camp

Tuscarora State Forest

40°20'25.7" (N) 77°35'29.6" (W)



For more information

Visit our website

www.dcnr.state.pa.us/forestry

or contact

Tuscarora State Forest

4455 Big Spring Rd.

Blain, PA 17006

717-536-3191

FD03@pa.gov

Camp S-110 was located on Germantown Road near the intersection with Horse Valley Road. Today all that remains are some cement slabs or foundations where buildings once stood and one barracks, which has been a state forest leased camp since the camp was abandoned. The camp was utilized from 1933 to 1936. Some of the pines around the site were planted by the members of the CCC camp.



Mumper Spring

Tuscarora State Forest

40°21'6.9" (N) 77°32'48.9" (W)



For more information

Visit our website

www.dcnr.state.pa.us/forestry

or contact

Tuscarora State Forest

4455 Big Spring Rd.

Blain, PA 17006

717-536-3191

FD03@pa.gov

You will find this spring in Kansas Valley close to the head of Mumper Springs Trail. The spring was named for the family who owned the property.



Blain Vista

Tuscarora State Forest

40°21'39.3 (N) 77°31'40.7" (W)



For more information

Visit our website

www.dcnr.state.pa.us/forestry

or contact

Tuscarora State Forest

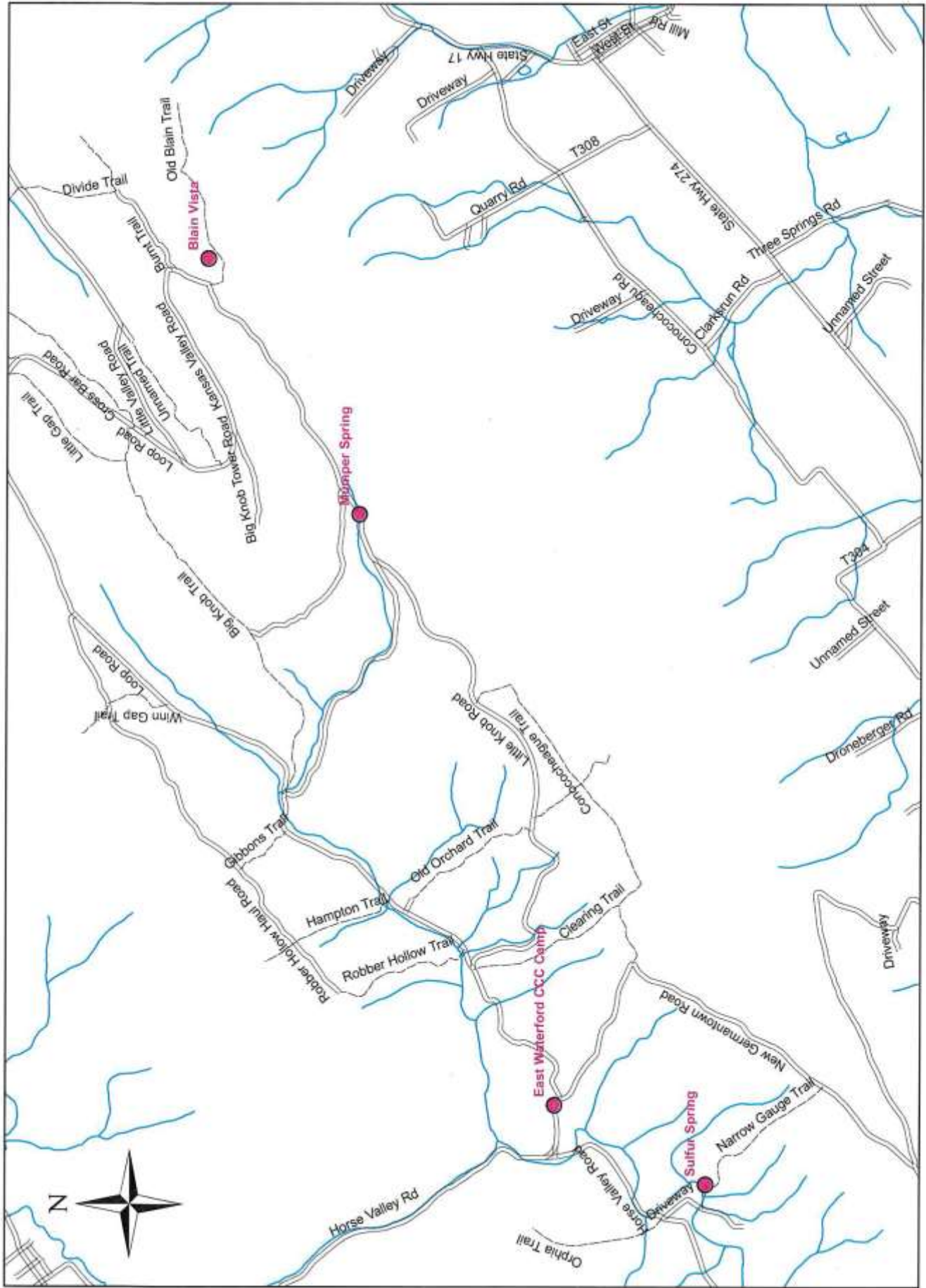
4455 Big Spring Rd.

Blain, PA 17006

717-536-3191

FD03@pa.gov

This beautiful view looks down on the town of Blain, which resides in Sherman's Valley. In the distance you can see Bower Mountain.





Van Dyke Brick Plant & Reservoir

Tuscarora State Forest

40°32'0" (N) 77°17'15" (W)



For more information

Visit our website

www.dcnr.state.pa.us/forestry

or contact

Tuscarora State Forest

4455 Big Spring Rd.

Blain, PA 17006

717-536-3191

FD03@pa.gov

The Van Dyke Brick plant operated until the 1950's. The state bought the 5,382 acres from Kaiser Aluminum and Chemical Company in 1964. It was designated The Tuscarora Wild Area. In 2013 the state dedicated it as the James C. Nelson Wild Area. He was one of our State foresters.



James C. Nelson Wild Area

Tuscarora State Forest

40°28'46" (N) 77°22'15" (W)



The wild area has many attractions in its remote setting. This stone wall supports a trail that was part of the narrow gauge rail system and below is an old log slide, both used to get lumber off the mountain. You can gain access to the wild area through Game Land 88 or from Route 333 in Juniata County, where you will see this sign.

For more information

Visit our website

www.dcnr.state.pa.us/forestry

or contact

Tuscarora State Forest

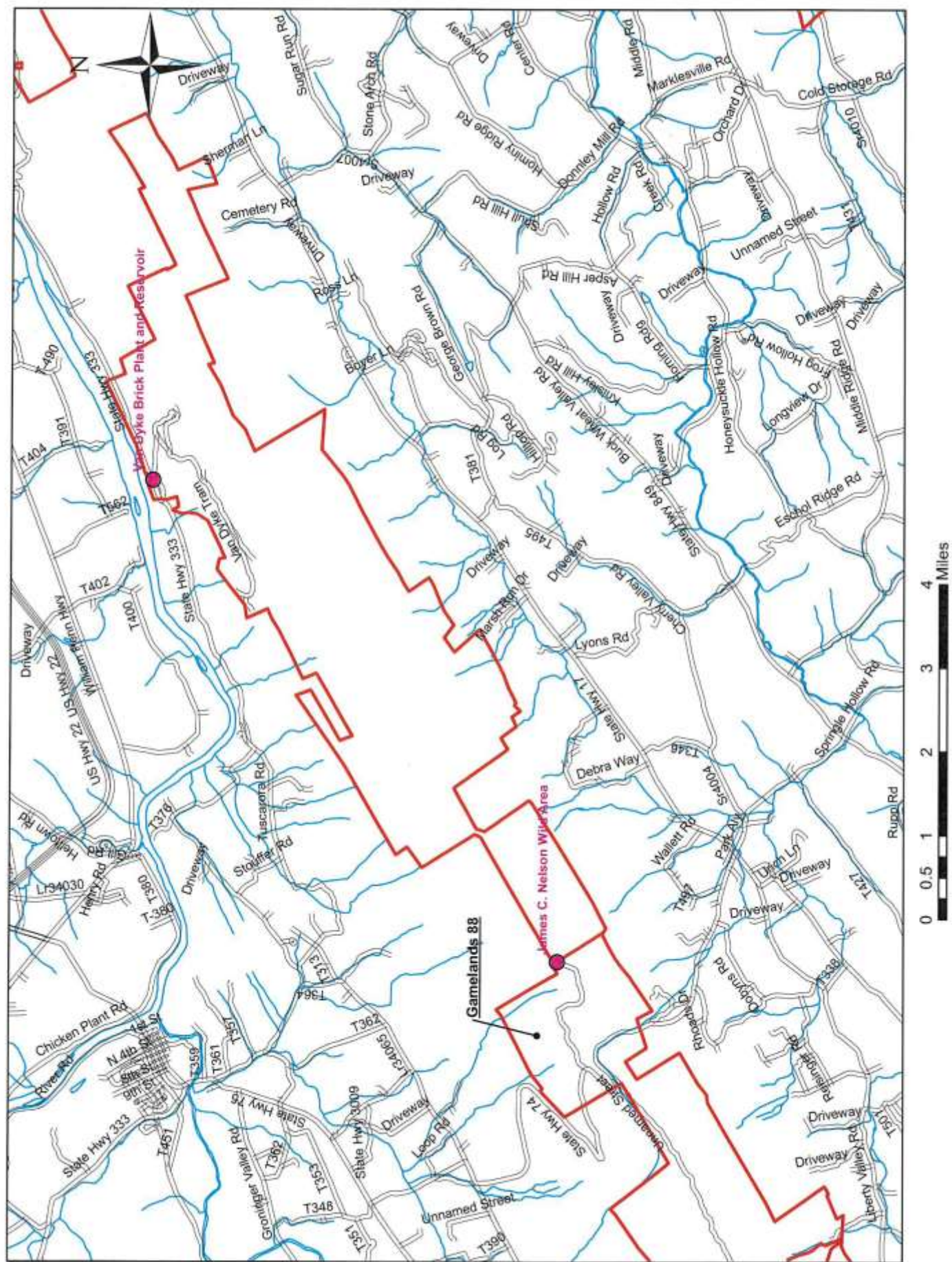
4455 Big Spring Rd.

Blain, PA 17006

717-536-3191

FD03@pa.gov







Karl Guss Picnic Area

Tuscarora State Forest

40°30'54.7" (N) 77°35'41.3" (W)



Karl Guss is located on Licking Creek Drive in Juniata County. You have access to hiking trails, a stocked stream, a pavilion and other picnic sites. It also features ramps for easier accessibility to the stream for fishing.

For more information

Visit our website

www.dcnr.state.pa.us/forestry

or contact

Tuscarora State Forest

4455 Big Spring Rd.

Blain, PA 17006

717-536-3191

FD03@pa.gov





Bear Trap

Tuscarora State Forest

40°30'57.6" (N) 77°36'32.9" (W)



This bear trap was built by Mart and James Whitesel, of Juniata county, during the 1870's. Most bear traps were made of logs and that is what makes this one unique. It has lasted over a century because it is built of mountain stone. The trap is roughly 10'x3'x3' and you can access it from a trail that splits off of Whitesel Trail in Licking Creek.

For more information

Visit our website

www.dcnr.state.pa.us/forestry

or contact

Tuscarora State Forest

4455 Big Spring Rd.

Blain, PA 17006

717-536-3191

FD03@pa.gov





Short Mountain Vista

Tuscarora State Forest

40°30'1.7" (N) 77°37'59.1" (W)



For more information

Visit our website

www.dcnr.state.pa.us/forestry

or contact

Tuscarora State Forest

4455 Big Spring Rd.

Blain, PA 17006

717-536-3191

FD03@pa.gov

Enjoy the view and get some amazing Fall pictures from one of our new vistas, off of Longfellow Road. You will get a great view of Blacklog Mountain including Spectacle Gap on the left and Spruce Gap on the right. As you look thru these gaps you will see Shade Mountain in the background.



Anderson Gap Vista

Tuscarora State Forest

40°30'01" (N) 77°38'00" (W)



For more information

Visit our website

www.dcnr.state.pa.us/forestry

or contact

Tuscarora State Forest

4455 Big Spring Rd.

Blain, PA 17006

717-536-3191

FD03@pa.gov

Across the parking area from Short Mountain Vista you will find this beautiful view. This is also one of our new vistas located on Longfellow Road. In the distance you can see Jacks Mountain.



Sand Springs

Tuscarora State Forest

40°28'35" (N) 77°39'21" (W)



This spring gets its name from the white sand in the bottom. The water **bubbles** up out of the ground under the little pool before flowing down to Licking Creek.

For more information

Visit our website

www.dcnr.state.pa.us/forestry

or contact

Tuscarora State Forest

4455 Big Spring Rd.

Blain, PA 17006

717-536-3191

FD03@pa.gov





E. Licking Creek CCC Camp

Tuscarora State Forest

40°27'0" (N) 77°40'56" (W)



The East Licking Creek CCC camp is still in existence. Today it is owned by the state and the cabins are rented out as leased campsites.



For more information

Visit our website

www.dcnr.state.pa.us/forestry

or contact

Tuscarora State Forest

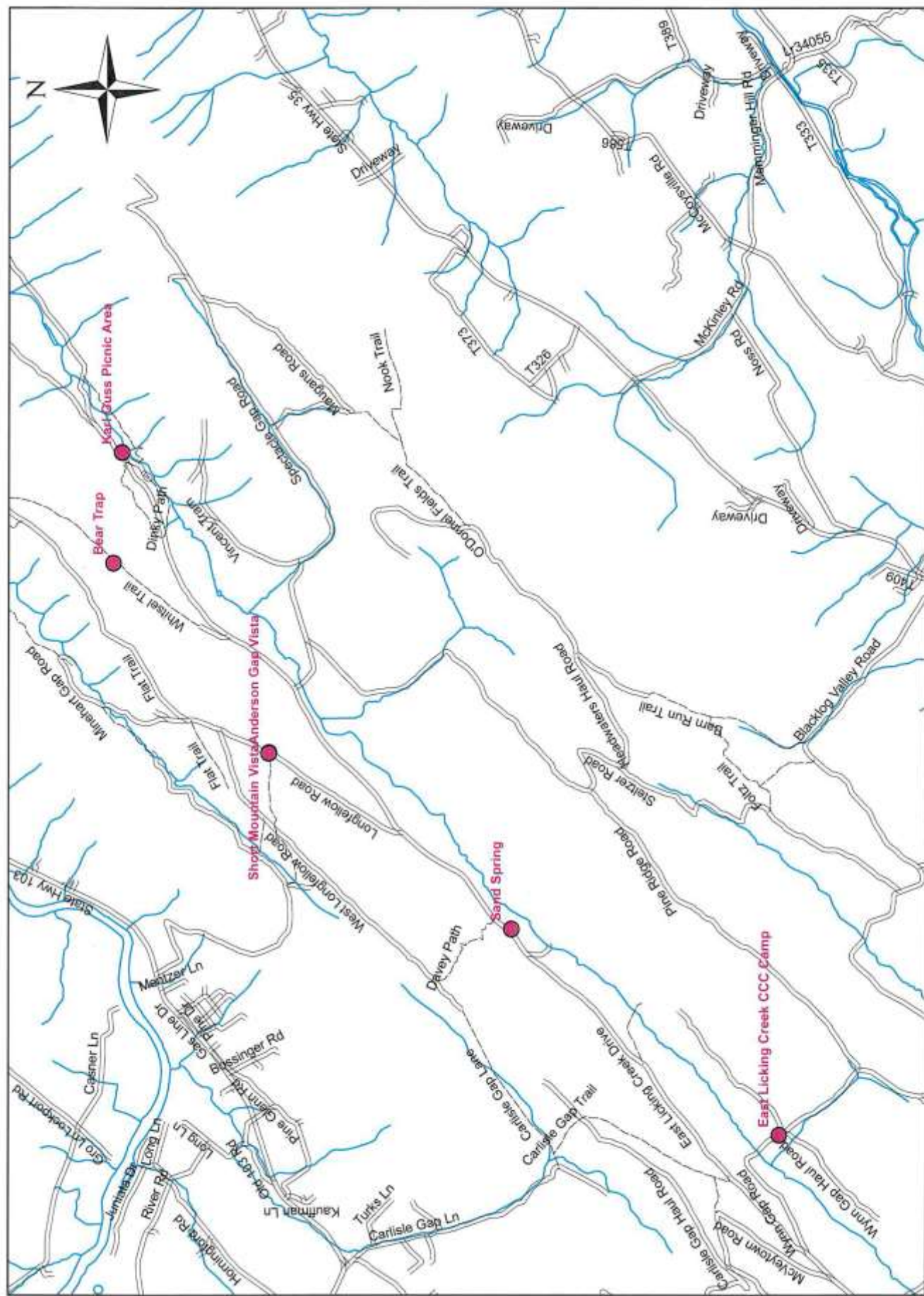
4455 Big Spring Rd.

Blain, PA 17006

717-536-3191

FD03@pa.gov







CCC Fountain

Tuscarora State Forest

40°22'16" (N) 77°46'36" (W)



This Fountain was created by the Civilian Conservation Corps in West Licking Creek. Located in the County Line Picnic Area and rediscovered in 2013, it has been restored by district staff.

For more information

Visit our website

www.dcnr.state.pa.us/forestry

or contact

Tuscarora State Forest

4455 Big Spring Rd.

Blain, PA 17006

717-536-3191

FD03@pa.gov





Shawmut Boat Access

Tuscarora State Forest

40°21'52" (N) 77°48'43" (W)



This boat access ramp is located along Route 103 near Newton Hamilton in Huntingdon County. It serves those who enjoy boating on the Juniata River. You can launch from here to enjoy some of our primitive island campsites.

For more information

Visit our website

www.dcnr.state.pa.us/forestry

or contact

Tuscarora State Forest

4455 Big Spring Rd.

Blain, PA 17006

717-536-3191

FD03@pa.gov





Gifford Road Vista

Tuscarora State Forest

40°21'44" (N) 77°48'29" (W)



For more information

Visit our website

www.dcnr.state.pa.us/forestry

or contact

Tuscarora State Forest

4455 Big Spring Rd.

Blain, PA 17006

717-536-3191

FD03@pa.gov

From this spot a wide northward view can be seen. Included in this panorama are the American Legion Country Club, the Juniata River, the town of Mt. Union, and picturesque farm fields.



Bell Furnace Trailhead & picnic area

Tuscarora State Forest

40°20'57" (N) 77°48'25" (W)

This is the site of an iron furnace built around 1839 by Edward Bell. It was also known as Edward's Furnace. It was run by Samuel Bell (Edward Bell's son) from 1839 to 1856. This was a small furnace, typical of many, that operated at that time. The only remnants are some ore pits and charcoal harths. Later the Mt. Union CCC camp was built on this site. There is one building remaining from that camp.

For more information

Visit our website

www.dcnr.state.pa.us/forestry

or contact

Tuscarora State Forest

4455 Big Spring Rd.

Blain, PA 17006

717-536-3191

FD03@pa.gov





Bell Furnace Cemetery

Tuscarora State Forest

40°20'48.9" (N) 77°48'29.2" (W)



This cemetery likely served the small community “Edward’s Furnace,” also known as “Bell’s Furnace,” which stood a few hundred yards to the north. The charcoal fired furnace was built by Edward Bell in 1836 and operated until about 1856.

For more information

Visit our website

www.dcnr.state.pa.us/forestry

or contact

Tuscarora State Forest

4455 Big Spring Rd.

Blain, PA 17006

717-536-3191

FD03@pa.gov





White Spruce Seed Orchard

Tuscarora State Forest

40°22'14.5" (N) 77°44'8.7" (N)



For more information

Visit our website

www.dcnr.state.pa.us/forestry

or contact

Tuscarora State Forest

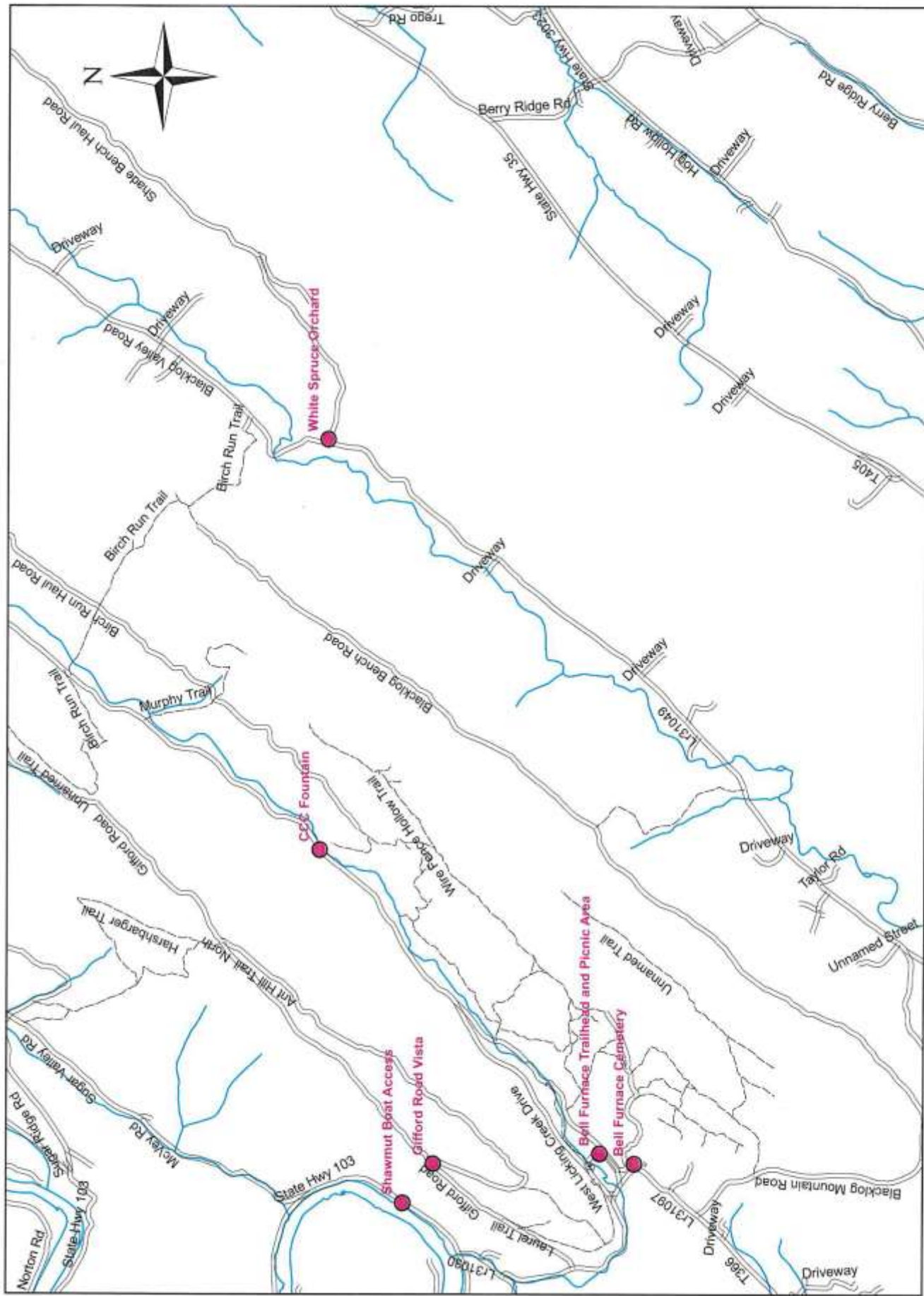
4455 Big Spring Rd.

Blain, PA 17006

717-536-3191

FD03@pa.gov

These trees were planted as a seed source.
The seeds were collected for use at Penn
Nursery.



0 0.4 0.8 1.6 2.4 3.2 Miles