

Musser Gap Recreation Area

Musser Gap serves as a recreational gateway to the Rothrock State Forest. This 423-acre tract of land was first purchased in 2006 by ClearWater Conservancy. The land was later transferred to DCNR Bureau of Forestry to become part of Rothrock State Forest. This Tussey Mountain stream gap environment not only filters and recharges groundwater, but serves as vital plant and wildlife habitat. Musser Gap lies within Audobon’s Important Bird Area and the Game Commission’s Important Mammal Area.

A wide range of recreational opportunities are available to visitors of Musser Gap. The area is open to hiking, biking, mountain biking, horseback riding, hunting, fishing, bird watching, and many other activities. Motorized activities are prohibited within the Musser Gap Recreation Area.

The Musser Gap Trail System provides opportunities for both day users and also those looking to connect to the more interior trails of the Rothrock State Forest. Opportunities exist for “trail loops” as well as through hiking as Musser Gap serves as a connection to the Mid State Trail, one of PA’s long distance State Forest Hiking Trails. Users also have the ability to connect to Shingletown Gap Recreation Area.

Several “Points of Interest” are located within Musser Gap and the surrounding area.

Musser Run: As you continue further up into the mountain gap, you will be advancing along Musser Run and listening to the water as it cascades over boulders and rocks.

Lion’s Valley Vista: Whether you choose to climb Frog Hollow Tr. or take the more gradual approach of Musser Gap Tr./Huckleberry Loop, you’ll be rewarded with a view of State College, Penn State University, and all that Happy Valley has to offer.

Highline Vista: Located along Mountain Mist Trail, this vista is situated on a highline power line on the top of a ridge. It offers a wide open panoramic view of State College, Boalsburg, and the surrounding areas.


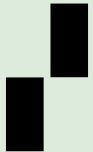
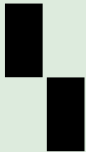

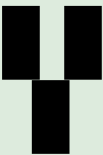
Hubler Gap Vista: After climbing 850 feet in elevation to the top of Tussey Mountain and the intersection of the Mid State Trail, you’ll be presented with a view of Hubler Gap and the interior of Rothrock State Forest. No buildings, towns, or major infrastructure...just nature at its finest.

Trail Blazes

A blaze is a marking, usually painted, to reassure the trail user that they are indeed following a trail and not a skid road or deer trail.

Blaze markings direct travel by their marking arrangement (see blaze example below). Blaze colors will vary for different trail uses and what type of activity is permitted on the trail.

YELLOW= Indicates a hiking trail
RED = Indicates a shared-use trail
ORANGE= Indicates a state forest hiking trail

CONTINUE STRAIGHT	RIGHT TURN	LEFT TURN
		
CAUTION	END OF TRAIL	REMEMBER
		Only use trails that permit your recreational use.

Care for the Land

State forests belong to all Pennsylvanians. Take time to enjoy them, but know the rules and regulations designed to protect the forests and you. Please be careful with fire, keep our forests litter free and don’t damage trees and other plants.

Certified “Well Managed”

Pennsylvania state forests are certified to FSC® standards. The Forest Stewardship Council® is an independent organization supporting environmentally appropriate, socially beneficial, and economically viable management of the world's forests.



iConservePA

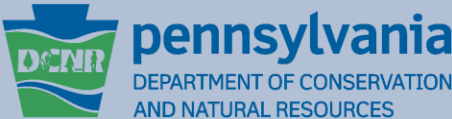
To learn more about the state’s natural resources and what you can do to help protect and enjoy them, log onto iConservePA.org.



For more information

Rothrock State Forest
Forest District #5

181 Rothrock Lane
Huntingdon, PA 16652
(814)643-2340



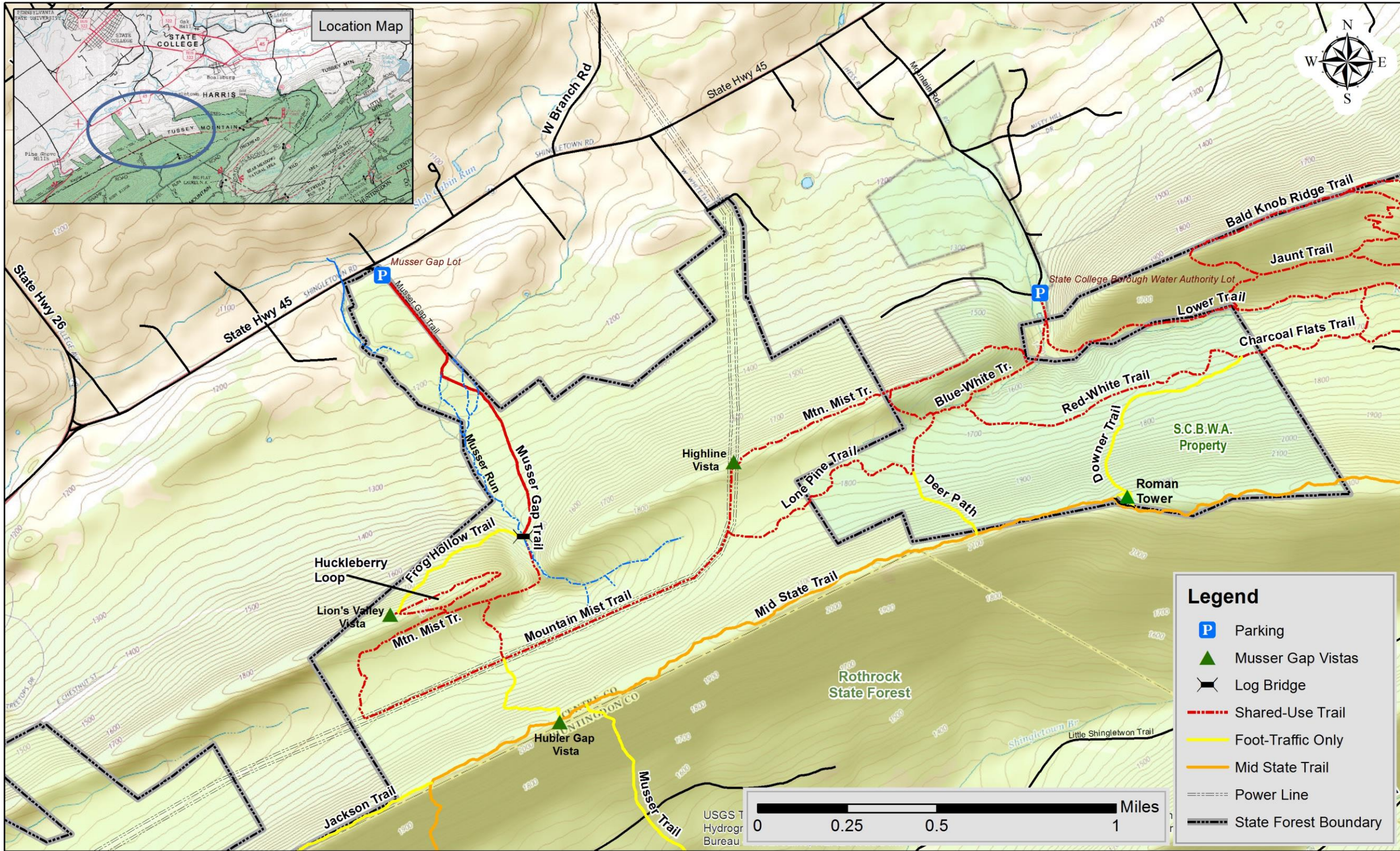
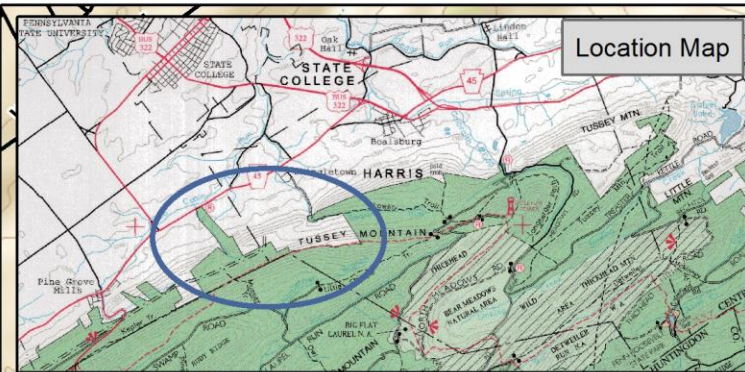
Musser Gap Recreation Area Rothrock State Forest



Pennsylvania’s vast state forest system comprises 2.2 million acres for you to use, enjoy and explore. The Department of Conservation and Natural Resources’ Bureau of Forestry manages these forests to ensure their long-term health and to conserve native wild plants.

Rothrock State Forest comprises 96,250 acres in Huntingdon, Centre, and Mifflin counties.





Legend

- Parking
- Musser Gap Vistas
- Log Bridge
- Shared-Use Trail
- Foot-Traffic Only
- Mid State Trail
- Power Line
- State Forest Boundary