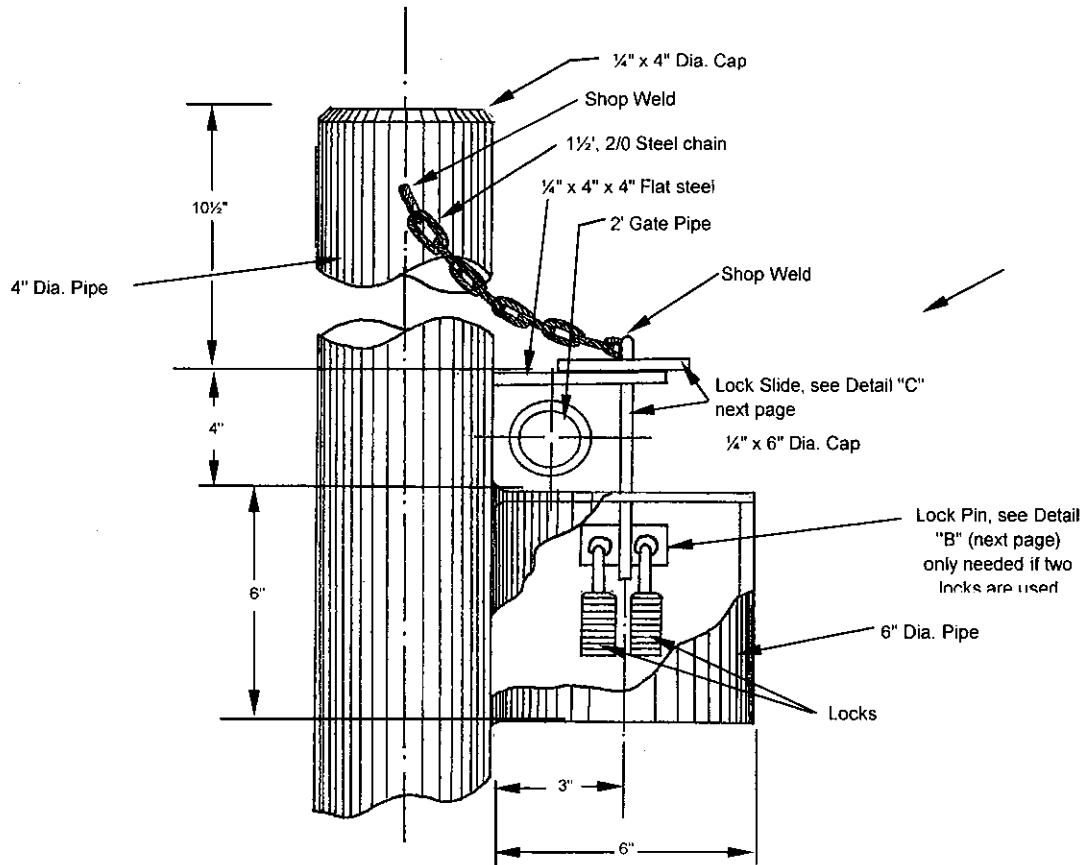
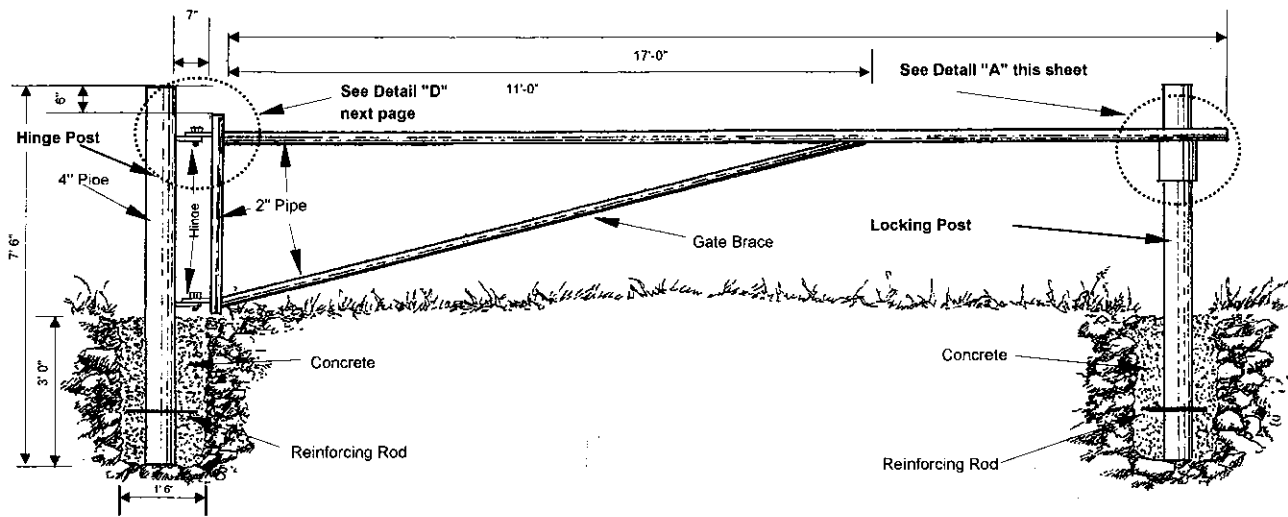


Gate for Camp Access Roads

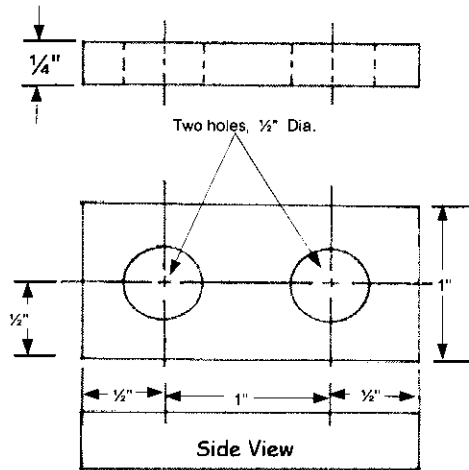


LOCKING POST
Detail "A"

Gate for Camp Access Roads

NOTE:

GATE MAY BE CONSTRUCTED OF EITHER (3/16" Minimum) PIPE OR SQUARE STOCK, NO MIXING OF MATERIALS



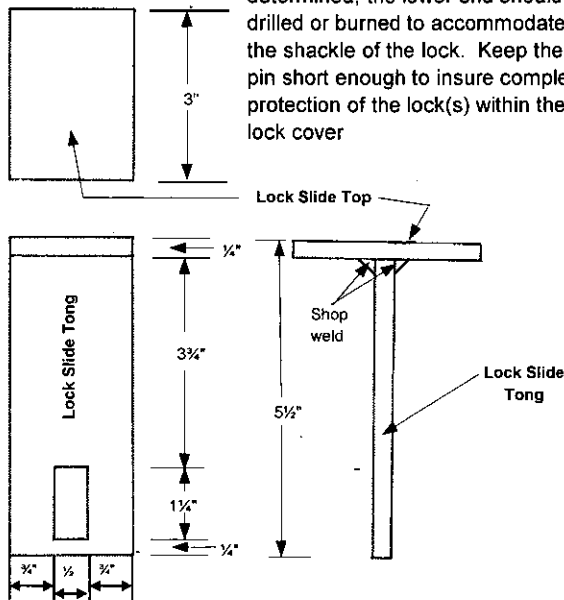
LOCK PIN

Not required if using
only one lock
Detail "B"

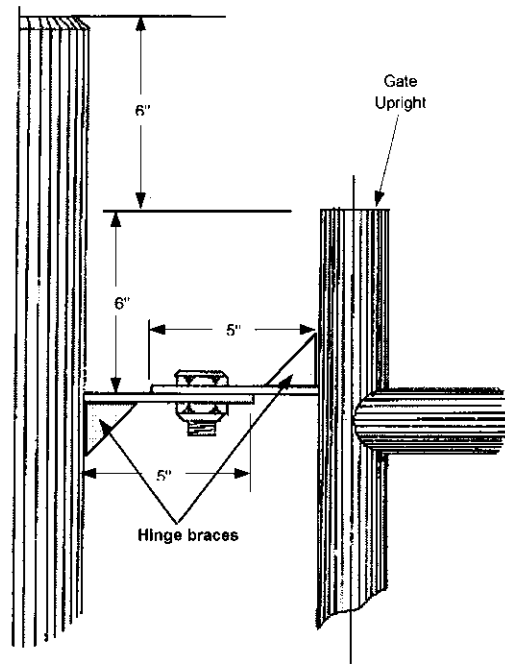
BILL OF MATERIALS

ITEM	QTY	SIZE	MATERIALS
Post	2	4" Dia X 7'-6"	Steel Pipe/Square
Top Gate Bar	1	2" Dia X 17'-0"	Steel Pipe/Square
Gate Brace	1	2" Dia X 12'-0"	Steel Pipe/Square
Gate Upright	1	2" Dia X 4'-0"	Steel Pipe/Square
Lock Cover	1	6" Dia X 5 1/2"	Steel Pipe/Square
Post Cap	2	1/4" X 4"	Flat Steel
Lock Cover Cap	1	1/4" X 6"	Flat Steel
Lock Slide Holder	1	1/4" X 4" x 4"	Flat Steel
Lock Slide Top	1	1/4" X 2" X 3"	Flat Steel
Lock Slide Tong	1	1/4" X 2" X 5 1/2"	Flat Steel
Hinge Halves	4	1/4" X 2" X 5"	Flat Steel
Hinge Pins	2	3/4" X 1 1/4"	Case Hard Nut & Bolt
Hinge Braces	4	1/4" X 1 1/2" X 1 1/2"	Flat Steel
Reinforcing Rod	2	1/2" X 12"	Steel Bar
Concrete	10	80 Lb. Bags	Dry Sack Ready Mix
Paint	1	Quart	Primer, Rust Prevent.
Lock Pin	1	1/4" X 1" X 2"	Flat Steel
Chain	1	1 1/2'	2/0 Steel
Backboard	1	1' X 2' X 3' X 1/8"	Flat Steel

Lock slide may be made from any suitable material either round or flat. Case hardened steel should be used. After length has been determined, the lower end should be drilled or burned to accommodate the shackle of the lock. Keep the pin short enough to insure complete protection of the lock(s) within the lock cover



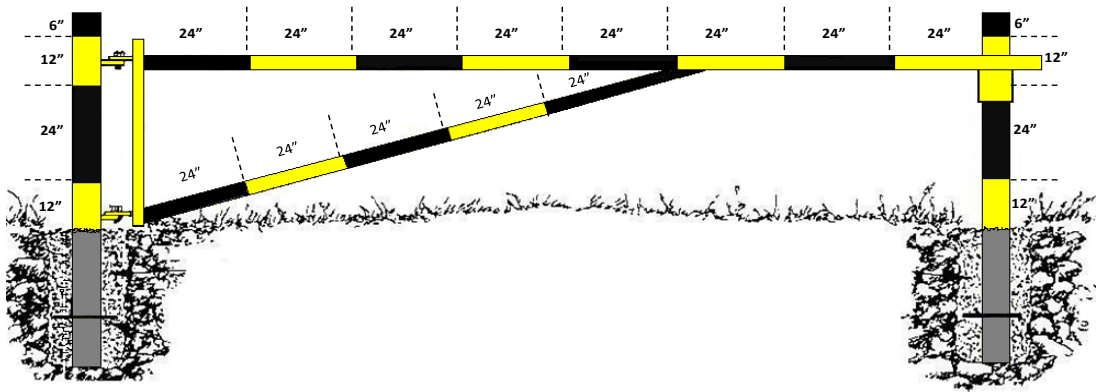
LOCK SLIDE Detail "C"



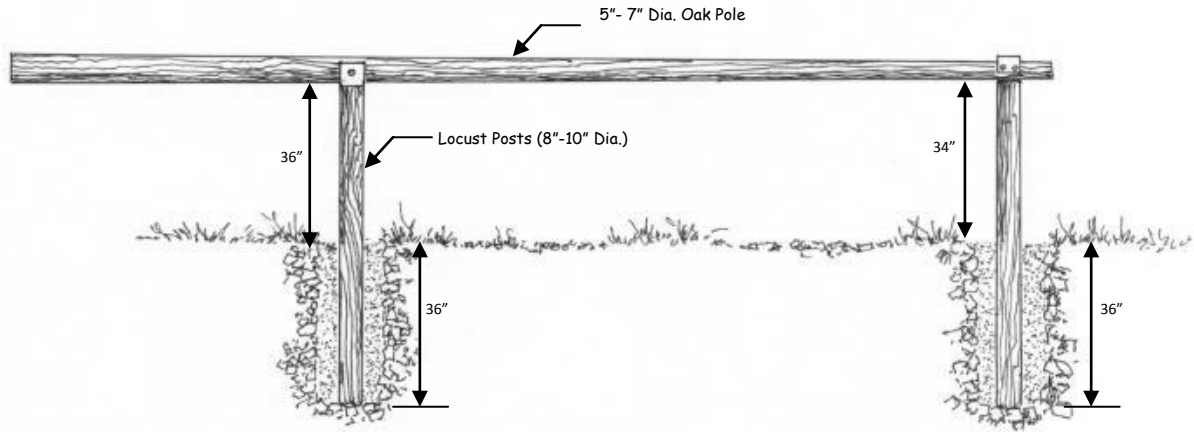
GATE HINGE Detail "D"

Gate Painting Standard

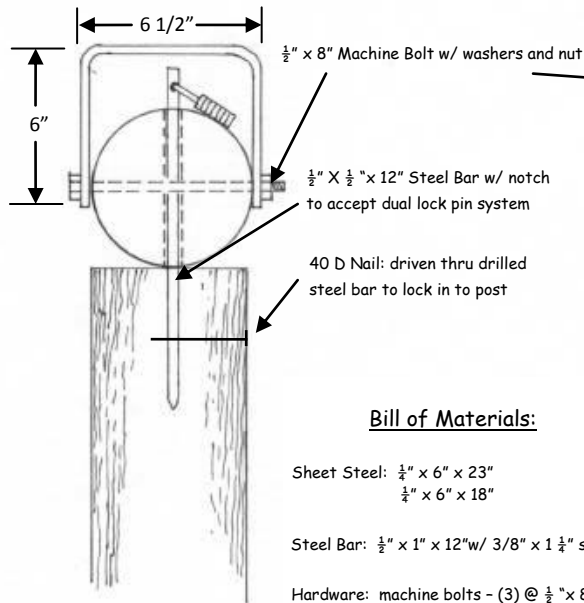
- 12" alternating black and yellow painted bands for vertical posts
- 24" alternating black and yellow painted bands for horizontal cross braces
- 2" black reflective tape placed at ends of each painted black segment



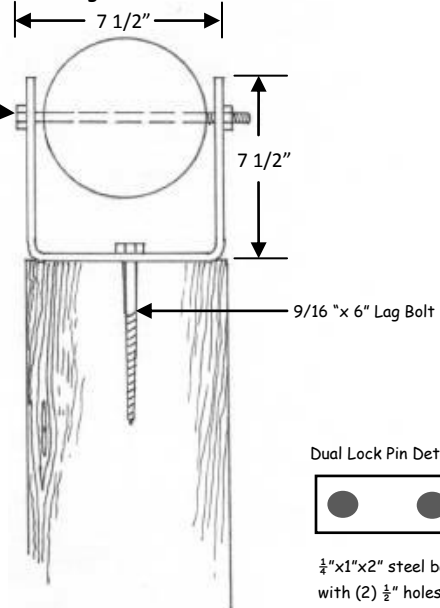
WOODEN POLE - TYPE GATE HEAVY DUTY VERSION



Lock Cover Detail



Hinge Detail



Bill of Materials:

Sheet Steel: 1/4" x 6" x 23"
1/2" x 6" x 18"

Steel Bar: 1/2" x 1" x 12" w/ 3/8" x 1 1/4" slots

Hardware: machine bolts - (3) @ 1/2" x 8"
machine nuts - (3) @ 1/2"
machine washers - (6) @ 1/2"
40D penny nail (1)

Wood: locust posts (2) @ 8" dia. x 6'
(1) @ 6" dia. x 6'
oak pole - (1) 5"-7" dia. x variable length

Dual lock pin: 1/2" x 1" x 2" steel bar w/ (2)
1/2" holes drilled on each end

Dual Lock Pin Detail



1/2" x 1" x 2" steel bar
with (2) 1/2" holes

6" x 6" treated wood may be substituted for locust and oak

Commonwealth of Pennsylvania - DCNR

June 7, 2013

Wooden Pole Gate with reflective delineator mounted when needed for motorized trails



- Center marker is 8"x24" bridge hazard sign
- End markers are 7"x7" hazard marker sign (snowmobile trail sign)

