

Civilian Conservation Corps on the Tioga

Major changes came to the forest in 1933 with the establishment of the Civilian Conservation Corps camps located at Darling Run, Elk Run, Leetonia, and Dixie Run. The major work activities of these camps were construction and maintenance of roads, trails, and bridges

The CCC was also employed in reforestation, fire control, and building construction. The construction of the stone cabins at the three fire towers in the Forest and the development of Parks; picnic areas and scenic vistas were the work of the CCC. Most of the present facilities in the forest were developed or improved by the labor force in the CCC camps.

The Days of the CCC

The Civilian Conservation Corps came into existence through the Emergency Conservation Work Act. This bill was passed March 31, 1933, and the first enrollee of the CCC was inducted on April 7, 1933. Many fire towers were erected, many miles of roads built, billions of trees were planted, and many recreational facilities constructed during the life of the CCC program. The approach of World War II saw the end of the CCC program. The busy days of the CCC's drew to an end in 1942 but the results of this work can still be seen today here on the Tioga State Forest and thousands of other locations across the United States.

Remember: Disturbance or removal of any artifacts from these sites IS prohibited

Camp Information

Four CCC camps were located on the Tioga State Forest. A fifth camp was located near state forest land along the Straight Run Road.

S-155-Pa—Darling Run—This camp opened June 6, 1935. The camp replaced S-92-Pa along the Straight Run Road near Asaph after a fire resulted in its closing. Company Number 1354 was stationed here. The camp closed in 1941. Several old foundations are all that remain of this site.

S-138-Pa—Dixie Run—This camp opened May 30, 1933, and closed April 1, 1937. This was also known as the Blackwell Camp. Companies 384 and 5474 were stationed at Dixie Run. A leased forest campsite and a storage building used by the Bureau of Forestry is still located here.

S-90-Pa—Leetonia—Also known as Cedar Run, this camp opened May 6, 1933, and closed in 1941. Company 328 occupied this camp. No buildings are left at the site. Many foundations can still be located. A sign has been erected here showing the original camp.



S-91-Pa—Painter Run—Opened June 20, 1933, and closed in January 1936. This camp was also known as the Watrous Camp. Company 5486 was assigned here. A storage building and leased forest campsite are all that remain of this site.

Care for the Land

State forests belong to all Pennsylvanians. Take time to enjoy them, but know the rules and regulations designed to protect the forests and you. Please be careful with fire, keep our forests litter free and don't damage trees and other plants.



Certified "Well Managed"

Pennsylvania state forests are certified to FSC® standards. The Forest Stewardship Council® is an independent organization supporting environmentally appropriate, socially beneficial, and economically viable management of the world's forests.



iConservePA

To learn more about the state's natural resources and what you can do to help protect and enjoy them, log onto iConservePA.org.



For more information

Tioga State Forest
Forest District #16
1 Nessmuk Lane
Wellsboro, PA 16901
(570) 724-2868
fd16@pa.gov
www.dcnr.state.pa.us



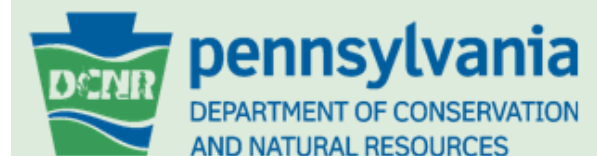
Civilian Conservation Corps Camps

Tioga State Forest

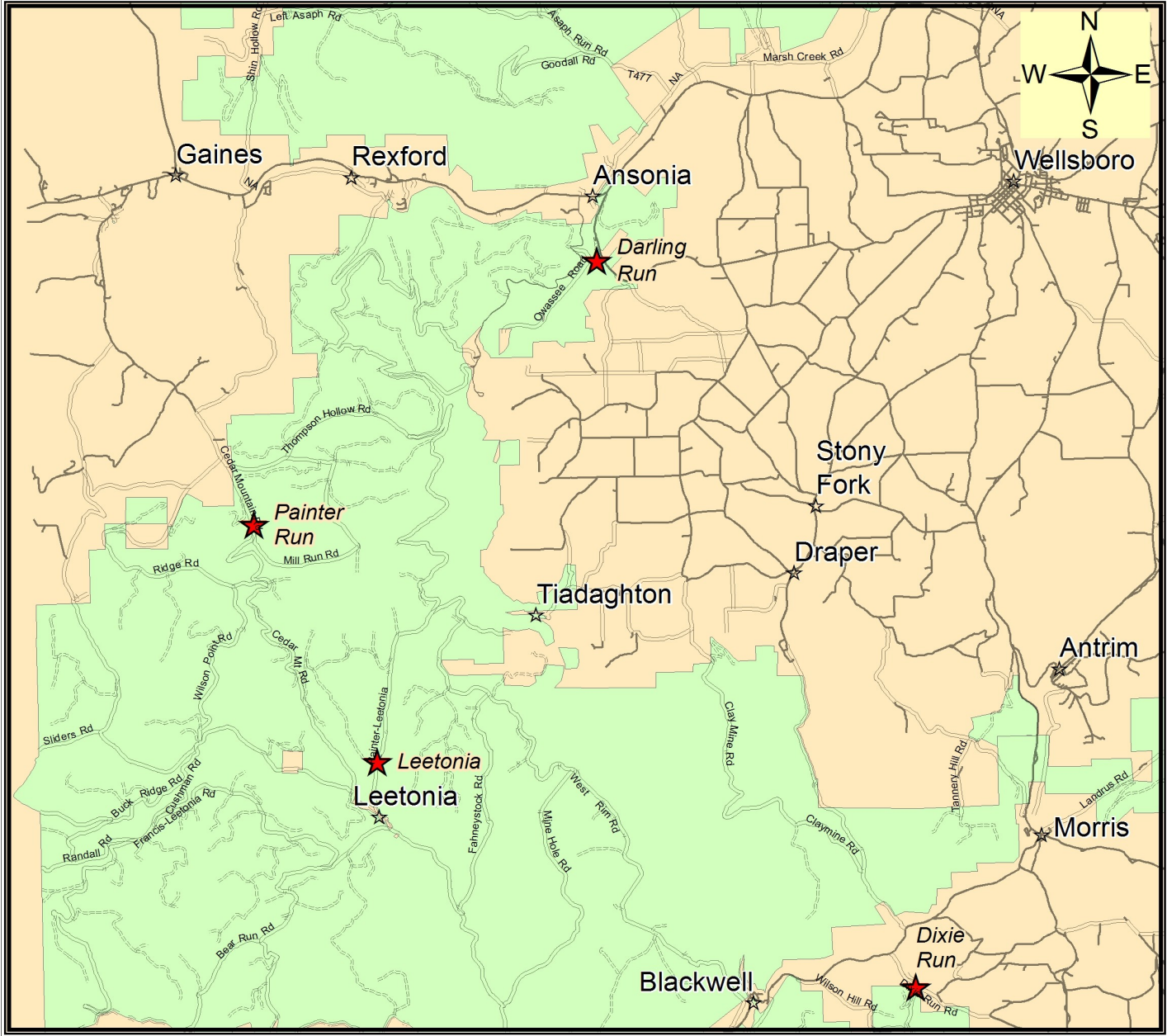
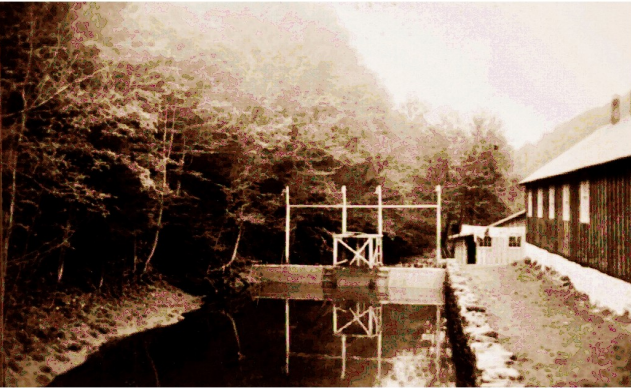


Pennsylvania's vast state forest system comprises 2.2 million acres for you to use, enjoy and explore. The Department of Conservation and Natural Resources' Bureau of Forestry manages these forests to ensure their long-term health and to conserve native wild plants.

Tioga State Forest comprises 162,000 acres in Tioga, Lycoming and Bradford counties.



CCC Camps on the Tioga State Forest



Photos by Karl Urban

Legend

- CCC Camps
- Towns
- Tioga State Forest



CCC Camps	LatDMS	LongDMS
Darling Run	41° 43' 54" N	77° 25' 42" W
Dixie Run	41° 33' 32" N	77° 19' 53" W
Leetonia	41° 36' 47" N	77° 29' 49" W
Painter Run	41° 40' 10" N	77° 32' 4" W