

Double Run Ski Trail

This cross country ski area is located on the mountain, just south of Worlds End State Park on both the east and west sides of State Route 3009. Approximately 14 miles of inter-connecting trails on the west side are situated in the “Coal Mine Area”. For skier safety, Coal Mine Road is closed to vehicular traffic for most of the skiing season. East of SR 3009, approximately 7 miles of trail located in the “Forest Inn Tract” are accessed from the back end of the snowmobile parking loop. The trailhead contains parking areas, latrines, and shelters.

All trails are marked with blue blazes and provide the skier with a variety of skiing distances. Most of the trails follow old logging roads and traverse moderately rolling topography suitable for all levels of skiers, however, users should not exceed their endurance or their ability on steeper sections and sharp turns. The ski route follows hiking trails and the Bridle Trail in some places so you will also see red and yellow blazes along with the blue ski trail blazes.



CAUTION!

State Forest Roads (excluding Coal Mine Road after the deer hunting season) are open for joint use by snowmobiles and motor vehicles. When skiing on these roads, use extreme care.

Camping

Camping is permitted in most areas of the Loyalsock State Forest. For a copy of our camping guidelines and a free permit, contact the Resource Management Center. **Camping and campfires are NOT permitted on Lands of the Eagles Mere Conservancy.**

Loyalsock State Forest

The Loyalsock State Forest, located in Sullivan, Lycoming and Bradford Counties is a valuable part of Pennsylvania’s 2.2 million acre State Forest system. It receives its name from the Loyalsock Creek, which winds for over 60 miles through the forest district.

The Loyalsock State Forest contains about 115,000 acres, characterized by high plateaus and ridges cut with numerous deep stream valleys. Northern hardwood tree species, such as birch, beech and maple associated with black cherry, white ash, tulip-poplar and hemlock, fill the forest. The beauty of these hardwoods, combined with the spectacular topography provides for a diversity of forest based recreational opportunities. Under the provisions of the forest’s Resource Plan, forest managers integrate this recreational potential with the increasing demand for sustained yields of high quality water, beneficial wildlife habitat, and valuable wood products. These requirements, not only depend heavily on scientific expertise, but demand the full cooperation of all forest users.



Be sure to bring your camera along to capture some of the most awe-inspiring scenery nature has to offer.

Care for the Land

State forests belong to all Pennsylvanians. Take time to enjoy them, but know the rules and regulations designed to protect the forests and you. Please be careful with fire, keep our forests litter free and don’t damage trees and other plants.

Certified “Well Managed”

Pennsylvania state forests are certified to FSC® standards. The Forest Stewardship Council® is an independent organization supporting environmentally appropriate, socially beneficial, and economically viable management of the world's forests.



iConservePA

To learn more about the state’s natural resources and what you can do to help protect and enjoy them, log onto iConservePA.org.



For more information

Loyalsock State Forest
Resource Management Center
Forest District #20

6735 Route 220
Dushore, PA 18614
(570) 946-4049



pennsylvania
DEPARTMENT OF CONSERVATION
AND NATURAL RESOURCES

Double Run Ski Trail

Loyalsock State Forest

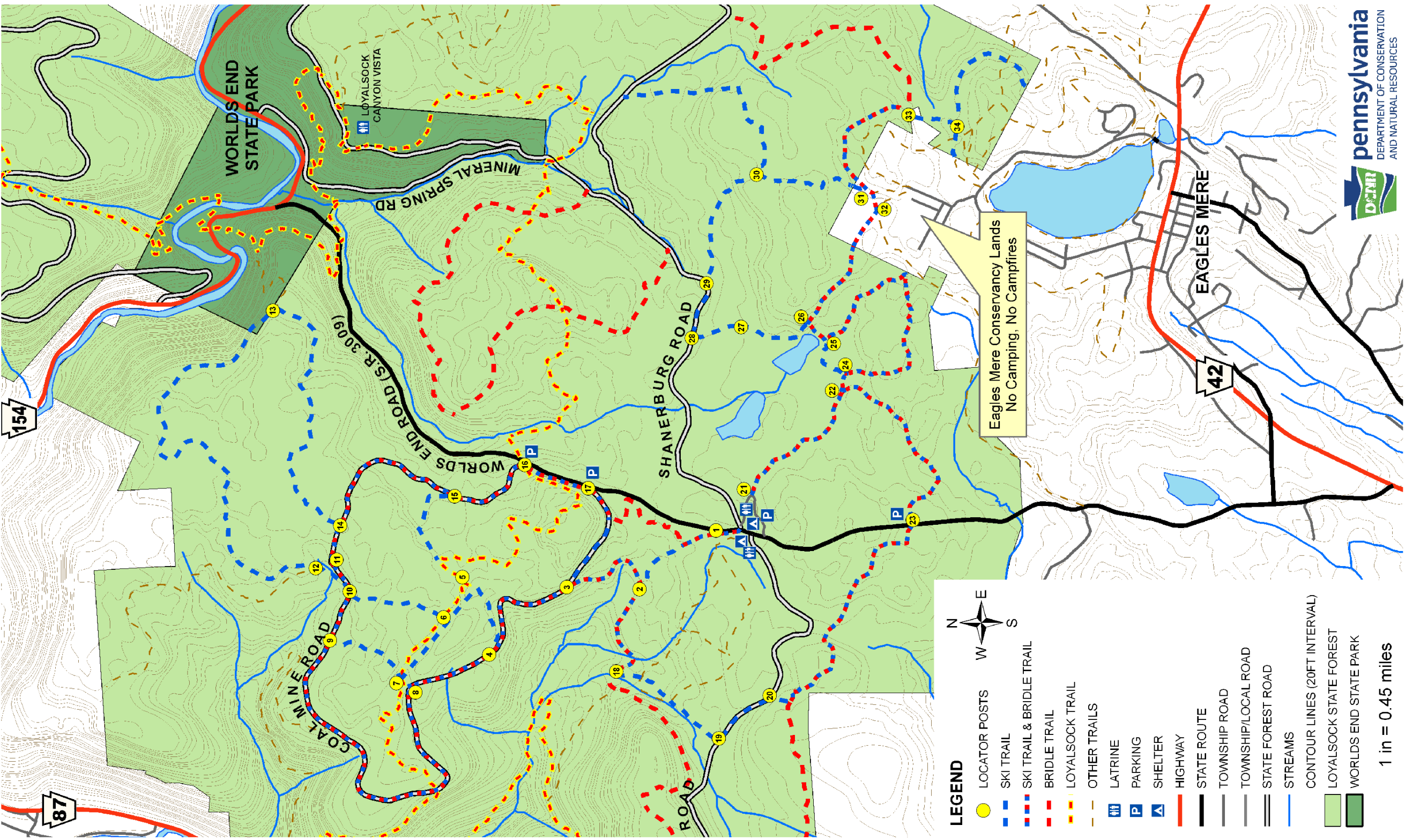


Pennsylvania’s vast state forest system comprises 2.2 million acres for you to use, enjoy and explore. The Department of Conservation and Natural Resources’ Bureau of Forestry manages these forests to ensure their long-term health and to conserve native wild plants.

The Loyalsock State Forest comprises 115,000 acres in Bradford, Lycoming and Sullivan counties.

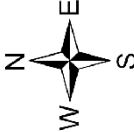


pennsylvania
DEPARTMENT OF CONSERVATION
AND NATURAL RESOURCES



LEGEND

- LOCATOR POSTS
- SKI TRAIL
- SKI TRAIL & BRIDLE TRAIL
- BRIDLE TRAIL
- LOYALSOCK TRAIL
- OTHER TRAILS
- LATRINE
- PARKING
- SHELTER
- HIGHWAY
- STATE ROUTE
- TOWNSHIP ROAD
- TOWNSHIP/LOCAL ROAD
- STATE FOREST ROAD
- STREAMS
- CONTOUR LINES (20FT INTERVAL)
- LOYALSOCK STATE FOREST
- WORLDS END STATE PARK



1 in = 0.45 miles

Eagles Mere Conservancy Lands
No Camping, No Campfires