

STREAMSIDE BUFFERS

Protect and enhance your backyard naturally with trees.

If you're a residential landowner with a stream on your property, you know water can sometimes get the upper hand—during and after heavy rainfalls. High water brought on by these rains can cause erosion, even make streambanks collapse. But installing a streamside buffer is a natural and effective way to offset severe weather's impact.

So, what is a streamside buffer?

A streamside buffer is a deliberate planting of trees and shrubs along any size of waterway to protect it against erosion and pollution. Trees within these buffers act like sponges to slow rainwater runoff, keeping your land intact and protecting your property value.

Effective streamside buffers feature trees and shrubs native to our region. Native plants thrive in our climate, are easier to care for and provide excellent food and habitat for local species of wildlife in water and on land, including trout and pollinators.



Cleaner water and healthier land both benefit all Pennsylvanians. Planting a streamside buffer shows your neighbors that you are a good steward of your land and how much you value your community.

THE BENEFITS OF STREAMSIDE BUFFERS



Reduced erosion: Tree roots hold streambanks in place.



Improved habitats: Streamside buffers create better natural conditions for wildlife in the water and on land, including trout and pollinators.



Enriched landscape: Buffers add shade, privacy and help with property value.



Cleaner water: Trees and shrubs filter pollution.

What next steps can I take to buffer my stream?

We want to help you plant your buffer! We can recommend an approach that is customized for you and your property—and we can help find funding opportunities and support to plant your streamside buffer.

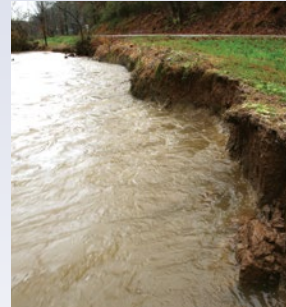
Contact our stream buffer experts at dcnr.pa.gov/BufferMyStream, ra-nrstreambuffers@pa.gov, or 717-705-2820 to arrange a visit.

Buffering your stream shows your neighbors and the community that you are a good steward of your land. It has a positive impact on Pennsylvania's natural resources and the Chesapeake Bay watershed—and leaves a legacy for years to come.

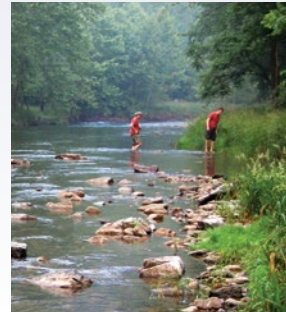


The trees and plants within streamside buffers create healthier streams and better habitats for wildlife in the water and on land.

Which stream appears healthier to you?



Without a streamside buffer, heavy rainfall can cause pollution to run off into your waterway—and even erode streambanks.



As the streamside buffer matures, its ability to filter out pollution increases. That results in cleaner water and healthier land.

THE IMPACT OF ONE GOOD STEWARD ON WILDLIFE HABITATS AND CLEAN WATER



Chip Brown and his wife own Pointer Haven Lodge in Centre County. The Lodge sits on 109 acres with Elk Creek—a Class A wild trout stream—running through his property.

To improve Elk Creek and the wild habitats that surround it,

Brown planted a streamside buffer. He began by removing unwanted invasive vegetation, then planted trees to form

the buffer that would help filter and absorb runoff. Success followed shortly—an uptick in wildlife activity was noted soon after the plantings.

“When you have a piece of land, you have to be a good steward of it,” Chip Brown says, “and certainly I tried to do my part here.”

No matter the size of your property, you too can be a good steward and leave a lasting legacy by planting a streamside buffer!

YOUR LAND. YOUR LEGACY. YOUR NATURAL RESOURCES.

Protect them all by planting a streamside buffer.

Learn more at dcnr.pa.gov/BufferMyStream



With all the benefits that streamside buffers provide, shouldn't you consider having one installed in your backyard?

Contact our stream buffer experts at ra-nrstreambuffers@pa.gov or 717-705-2820 to arrange a visit.