

Loyalsock State Forest at a Glance

Resource Management Center



Address:

Loyalsock Forest District
6735 Route 220
Dushore, PA
18614-8101

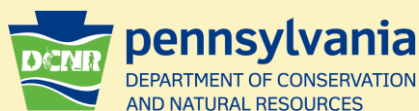
Phone: (570) 946-4049

FAX: (570) 946-4059

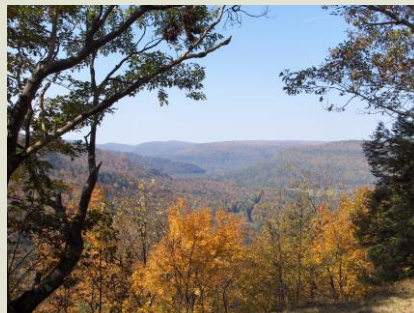
Email: FD20@pa.gov

District Facts

- Named for Loyalsock Creek
- Totals approximately 115,000 acres of state forest land
- Part of Pennsylvania's "Endless Mountains"
- Located in Sullivan, eastern Lycoming, and Bradford counties
- Primarily northern hardwoods forest type



Hiking



Alpine View on Loyalsock Trail

- Over 200 miles of hiking trails are found in the district forest.
- The 59-mile Loyalsock Trail is accessible via US Route 220 and Route 87.
- Old Logger's Path stretches 27 miles through Pleasant Stream valley and the historic lumbering town of Masten.
- Maps are available at Resource Management Center and online.

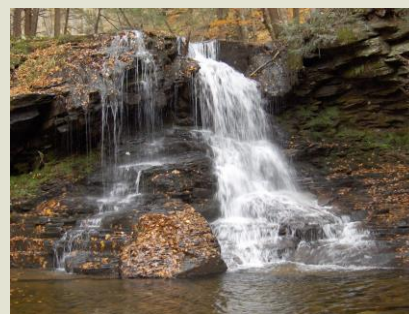
Camping

- Primitive backpack camping at undeveloped sites is permitted throughout the state forest.
- A permit is required to stay more than one night at the same location.
- Equestrian and motorized camping require a permit from the Resource Management Center or Hills Grove Maintenance Headquarters.
- Information on campsite locations can be found on camping web page.



Sightseeing

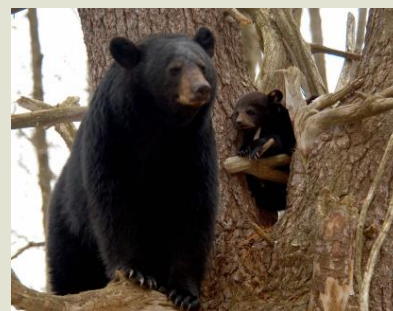
- Spectacular waterfalls are found throughout the district, including Haystack Rapids, Dry Run, Jacoby Run, and Angel Falls.
- Hundreds of miles of state forest roads provide wildlife and fall foliage viewing.
- Scenic vistas (many accessible from the road) include Band Rock, Sharp Top, Hills Grove Road, Slab Run, and High Knob Overlook.



Dry Run Falls

Hunting

- Game opportunities include deer, bear, turkeys, squirrels, rabbits, and grouse.
- Hunting is permitted throughout the forest except in safety zones; please obey all regulations.



Fishing

- In addition to excellent trout fishing, Loyalsock, Kettle, and Lycoming creeks feature awesome rapids and boulder fields.
- Native brook trout can be found in most headwaters throughout the district.
- Sones' and Bear Wallow ponds offer good fishing for perch, bluegill, bass, and pickerel
- Pa. Fish and Boat Commission regulations apply.



Native brook trout

Wild and Natural Areas

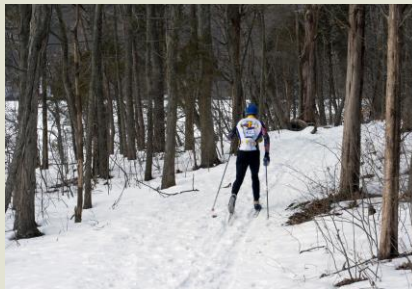


The rare pitcher plant at Devil's Elbow

- The 7,500-acre McIntyre Wild Area protects watersheds of four mountain brooks.
- The 404-acre Devil's Elbow Natural Area is noted for its biodiverse wetlands.
- The 2,600-acre Kettle Creek Wild Area features an exceptional wilderness trout stream.

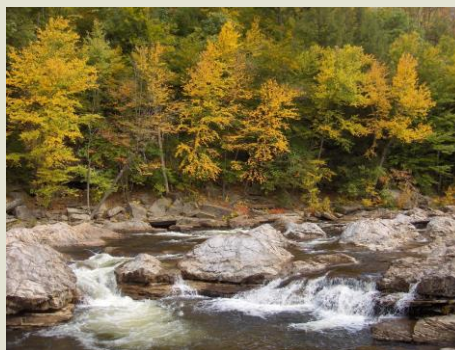
Winter Recreation

- 146 miles of snowmobile roads/trails are offered throughout the district.
- Ample parking for snowmobilers and cross-country skiers is found off World's End Road.
- Cross-country skiing and snowshoeing are permitted on most roads and trails in the district forest (use caution on snowmobile trails).
- Hawkeye and Sand Springs trails are managed for skiing.



Other Recreation

- The 52-mile Bridle Trail offers horseback riding and an equestrian campground.
- Picnic facilities are available at Dry Run, Sones' Pond, and Bear Wallow Pond.
- Canoeing and kayaking are popular on Loyalsock Creek, with ample parking offered at Sandy Bottom.



Autumn at Loyalsock Creek



More Information

For more information on Loyalsock State Forest, please contact:

Resource Management Center

(570) 946-4049

FD20@pa.gov



pennsylvania

DEPARTMENT OF CONSERVATION
AND NATURAL RESOURCES

www.dcnr.pa.gov