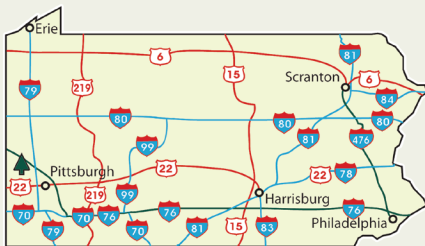


Hillman State Park

State Game Lands 432

8/2023



More Information

Pennsylvania Game Commission

Southwest Region Office
4820 Route 711
Bolivar, PA 15923
1-833-742-4868
1-833-742-9453
pgc-swregion@pa.gov

Hillman State Park

c/o Raccoon Creek State Park
3000 State Route 18
Hookstown, PA 15050-9416
724-899-2200
RaccoonCreekSP@pa.gov

An Equal Opportunity Employer

www.pgc.gov
www.dcnr.pa.gov/StateParks

@PennsylvaniaGameCommission

@PAStateParks



pennsylvania
DEPARTMENT OF CONSERVATION
AND NATURAL RESOURCES

This 3,654-acre undeveloped park, also known as State Game Lands 432, consists of rolling terrain dominated by deciduous and coniferous forests, shrubs, grassy fields, and steep slopes. There are no facilities or restrooms in the park.

The Department of Conservation and Natural Resources (DCNR) and the Pennsylvania Game Commission (PGC) work in partnership to manage this state park for public access and outdoor recreation. The PGC is responsible for administration and operation of the park.

Directions

GPS DD: Lat. 40.458741 Long. -80.406129
914 Kramer Rd, Burgettstown, Pa 15021

Hillman State Park is located in northwestern Washington County. Access the park from the east and west from US 22 and from the north and south from PA 18.

Recreational Opportunities

TRAILS: 34.2 miles

All trails are open to horseback riding, mountain biking, and hiking, and are blazed red. E-bikes are permitted but must follow all e-bike guidelines. www.dcnr.pa.gov/Pages/EBikePolicy.aspx

Please note, the PGC maintains some access roadways through habitat management areas. These roadways may not be open to horses and biking. Read all posted signage.

Trails are closed to bicycles and horses during fall and spring big game seasons. Some Sundays are open to hunting. Please contact the PGC or Raccoon Creek State Park for specific dates as they change yearly.

Trail difficulty ratings are based on hiking use.

Abby's Trail: 1.9 miles, more difficult

Airport West Trail: 2.7 miles, more difficult

Airport South Trail: 1.4 miles, easiest

Colt Trail: 1.4 miles, easiest

Figure 8 Trail: 3.3 miles, more difficult

Gelding Trail: 0.8 mile, easiest

Haul Trail: 1.8 miles, easiest

Meadow Trail: 1.8 miles, easiest

Miller Airport Trail: 0.7 mile, more difficult

Old Mare Trail: 1.1 miles, easiest

Pitch Pine Trail: 1.1 miles, easiest

Rouse Trail: 3.0 miles, most difficult

Short 'n' Sweet Trail: 1.5 miles, easiest

Sprocket Trail: 3.5 miles, more difficult

Stallion Trail: 1.7 miles, easiest

Switchback Trail: 3.0 miles, more difficult

Van Gorder Trail: 1.4 miles, more difficult

Vista Trail: 0.1 mile, more difficult

Wetland Trail: 2.1 miles, easiest

HUNTING AND FIREARMS: Over 3,000 acres are open to hunting, trapping, and the training of dogs during established seasons. Common game species are white-tailed deer, wild turkey, pheasant, and squirrel.

Pennsylvania Game Commission rules and regulations apply.

History

James F. Hillman, president of Harmon Creek Coal Corporation, donated 3,654 acres of land to the Commonwealth of Pennsylvania for outdoor recreational purposes in 1969. At that time, the donation was the largest single land gift for a state park in the country.

Before opening to the public, the former coal mining site underwent extensive reclamation to restore habitat and address abandoned mine drainage issues. From 1970 through 1977, work included filling, grading, erosion control, soil treatment with fly ash, and additional plantings.

Radio-Controlled Flying

The K. Leroy Irvis Radio Control Model Airport is operated and maintained by the Greater Pittsburgh Aero Radio Control Society. All users must have an FAA license, maintain and display a current AMA membership, and preregister with Raccoon Creek State Park to utilize the facility. Contact the state park office at 724-899-2200 for more information and to preregister.



Access for People with Disabilities

If you need an accommodation to participate in park program due to a disability, please contact Raccoon Creek State Park. This publication text is available in alternative formats.

Contact the PGC Southwest Regional Office for ADA accessible hunting information at 724-238-9523.



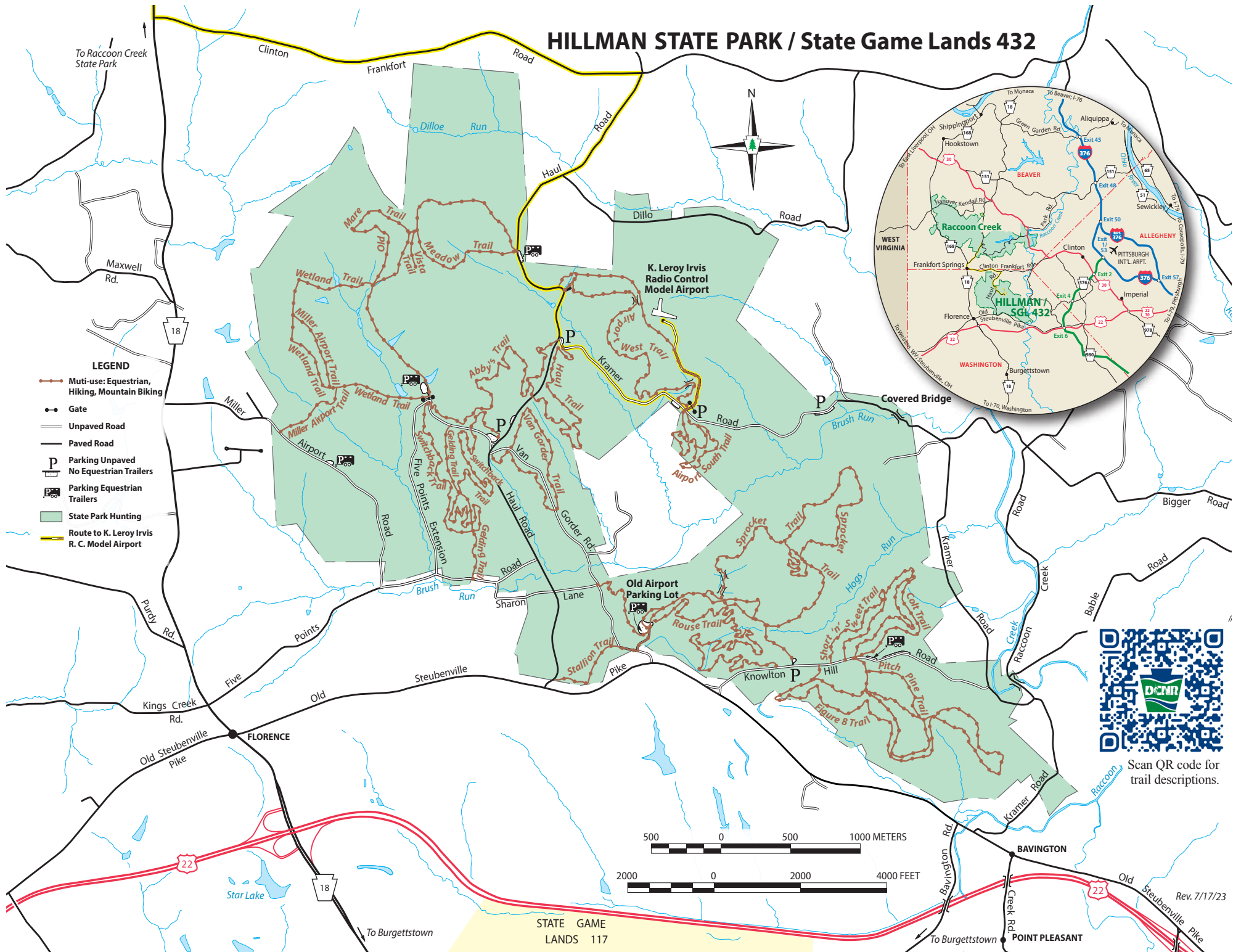
In an Emergency

Call 911.

NEAREST HOSPITAL

Weirton Medical Center
601 Colliers Way
Weirton, WV 26062
304-797-7600

HILLMAN STATE PARK / State Game Lands 432



Scan QR code for trail descriptions.