

## Pricing and Reservations

**PRICING:** Lodging prices vary due to type of facility; number of guests the facility accommodates; Pennsylvania residency status; length of stay; day of the week; and season.

For base pricing information, scan the code or visit the Pennsylvania state parks website at <http://www.dcnr.pa.gov/StateParks/StateParkPrices>

Please note, base pricing information does not include fees or taxes.

**RESERVATIONS:** Lodging in Pennsylvania state parks can be reserved 11 months to three days before the day of arrival. If it is two days or less before the arrival date, call the state park to inquire about availability.

For reservations, call the Pennsylvania State Parks Reservation Center at 888-PA-PARKS (888-727-2757), Monday through Saturday, 7:00 AM to 5:00 PM, or visit <http://pennsylvaniastateparks.reserveamerica.com>.

Reservations can be made using MasterCard, VISA, American Express, and Discover credit cards; personal, traveler's, and cashier's checks; or a Pennsylvania State Parks Gift Card. To receive a confirmed reservation, full payment must be received within ten days of making the reservation.

**FEES:** A non-refundable transaction fee is charged for each reservation.

Cabin, lodge, unique house, and inn prices incur additional state and/or county local tax(es). The county local hotel occupancy tax rate varies depending on the location in the Commonwealth.

Designated dog-friendly facilities charge an additional fee per night.

**CANCELLATIONS AND CHANGES:** Cancellations, changes, or transfers to reservations will be assessed a fee and can be made prior to arrival by the Pennsylvania State Parks Reservation Center.

Any cancellation, change, or transfer made upon arrival must be processed through the state park. For complete information on fees, cancellations, changes, transfers, and discount policies, view the Reservation Cancellation/Change Policy at the website above.



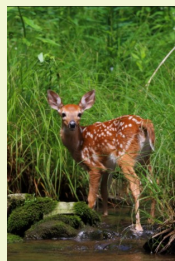
## Linn Run State Park



The varied topography and mixed hardwood and evergreen forest make the 612-acre Linn Run State Park a scenic place for picnicking, hiking, and cabin rentals year round.

Grove and Rock runs join to make Linn Run, an excellent trout stream. A lovely waterfall, Adam Falls, is a scenic spot nearby the picnic area.

Forbes State Forest borders Linn Run State Park and offers 50,000 acres of land for outdoor recreation.



### Access for People with Disabilities

This publication text is available in alternative formats. If you need an accommodation to participate in park activities due to a disability, please contact the park you plan to visit.

## Lodging

### Linn Run State Park



Rustic Cabin 9



Modern Cabin 7

770 Linn Run Road  
Rector, PA 15677

Office GPS DD: Lat. 40.15427 Long. -79.2133

724-238-6623

[LinnRunSP@pa.gov](mailto:LinnRunSP@pa.gov)

### Reservations:

888-PA-PARKS

[www.dcnr.pa.gov/StateParks](http://www.dcnr.pa.gov/StateParks)

## Linn Run State Park Cabins

The cabin area has nine rustic cabins and one modern cabin. Cabins are available for rent year round. They sleep two to eight guests. Each cabin has a kitchen (table with benches, refrigerator, stove, and oven), fireplace, heater, fire ring, and picnic table. Firewood is not provided. Rustic cabins do not have a bathroom or running water. A private restroom with a shower, toilet, and sink is a short walk from the cabin. Modern Cabin 7 does have running water in the kitchen and a full bathroom. Cabin 7 is ADA accessible. A maximum of two dogs are permitted at cabins 7, 9, and 10 for a fee.

Guests should bring sheets, blankets or sleeping bags, pillows, etc.; all cooking, serving, and eating utensils; coffee pot; toaster; toiletries; towels; garbage bags; containers to carry water; dishpans; and non-power tools to cut and split firewood. Tents, camping trailers, and RVs are prohibited.

### 2 Guest Cabins:

Cabins 1 has a bedroom with a double bed.  
Cabins 6 has a bedroom with two single beds.

### 4 Guest Cabins:

Cabins 3, 5, 8, and 9 each have one bedroom with two sets of single bunk beds.

### 6 Guest Cabins:

Cabins 2 and 4 each have two bedrooms with three sets of single bunk beds.

Cabin 7 has one bedroom with a double bed. A loft has two single mattresses. The full-size sofa pulls out into a double bed.

### 8 Guest Cabin:

Cabin 10 has two bedrooms, each with a set of single bunk beds and a single bed. A loft has two single mattresses.

## Lodging Rules

**CHECK-IN:** At 3:00 PM, cabin keys are available for contact-less pickup at the park office.

**CHECK-OUT:** Lodging must be vacated by 10:00 AM. After cleaning the facility, disposing of trash, and removing personal property, return keys and survey to the park office. If the office is closed, deposit keys and survey in the slot to the left of the park office door.

**ALCOHOLIC BEVERAGES:** Alcoholic beverages are prohibited in all Pennsylvania state parks.

**PETS:** Pets are permitted in Cabins 7, 9, and 10 for a fee.

Guide dogs and service dogs are not considered pets. Pets are prohibited in swimming areas and all overnight facilities not participating in the pet program.

**FIRES:** Fires are only permitted in fire rings, grills, and fireplaces. Fires must be attended at all times and extinguished before leaving the area.

Firewood is not provided. Cutting live or standing trees and the operation of chainsaws are prohibited.

**QUIET HOURS:** Campers must not disturb the sleep of others between 9:00 PM and 8:00 AM.

**VISITORS:** Visitors are welcome from 8:00 AM to 10:00 PM.

**MINIMUM/MAXIMUM STAY:** Cabins have a two-night minimum and a 14-night maximum stay in the non-peak season. In the summer peak season, the second Friday in June to the third Friday in August, rentals are weekly (Friday to Friday).

**HUNTING:** Use **extreme caution with firearms** at all times. Other visitors use the park during hunting seasons. Firearms and archery equipment used for hunting may be uncased and ready for use only in authorized hunting areas during hunting seasons. In areas not open to hunting or during non-hunting seasons, firearms and archery equipment shall be kept in the owner's vehicle or enclosed trailer. Exceptions include: law enforcement officers and individuals with a valid *Pennsylvania License to Carry Firearms* are authorized to carry a firearm concealed on their person while they are within a state park.

## Linn Run State Park Cabin Map

