

# OUTSTANDING GEOLOGIC FEATURE OF PENNSYLVANIA

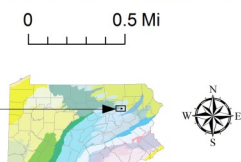
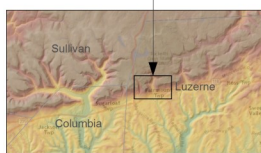
## KITCHEN CREEK FALLS, LUZERNE COUNTY

Stuart O. Reese, 2016



### Location

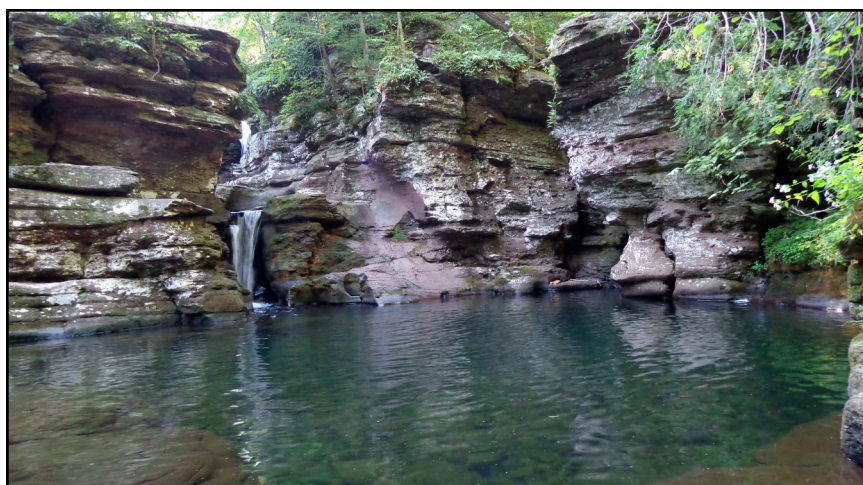
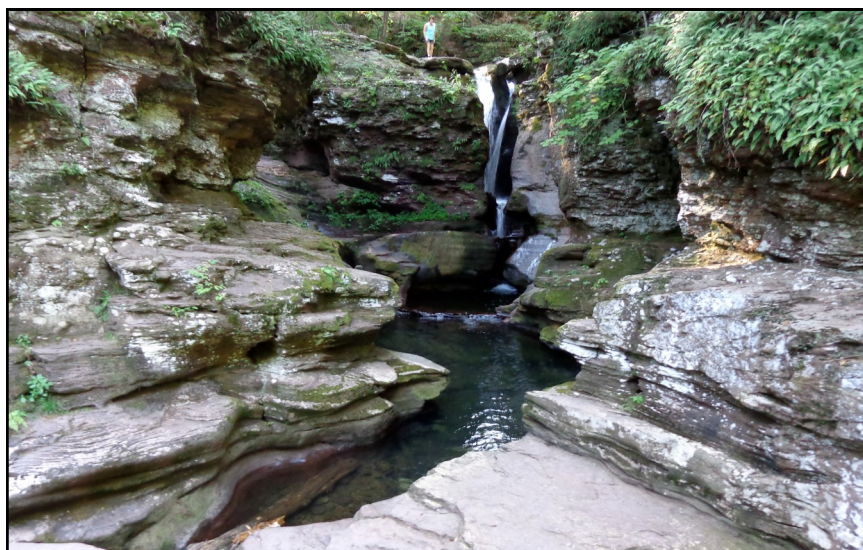
Ricketts Glen State Park, Luzerne Co., Fairmont Twp.,  
lat: 41.2994, lon: -76.2739; Red Rock 7.5-minute quadrangle



### Geology

The picturesque Kitchen Creek Falls, also known as Adams Falls, occurs in three separate drops that total over 50 feet in [Kitchen Creek gorge](#). Between the falls, the water flows through deep but narrow chutes carved in the red shales and gray sandstones of the Catskill Formation. Kitchen Creek's path is marked with potholes formed by swirling sand and gravel. Smoothed semicircles are common along the walls of the narrow gorge.

The two lower drops have eroded plunge pools from the power of the waterfalls hitting shale and siltstone, which are soft enough to erode without breaking apart into blocky pieces. The plunge pool at the lower cascade, called Leavenworth Pool, is 8 to 10 feet deep.



### Recommended Reading

Inners, J. D., and Fleeger, G. M., eds., 2006, The Haystacks, "Ricketts Folly," and the end of the world—geology of the Glaciated Allegheny High Plateau, Sullivan, Luzerne, and Columbia Counties, Pennsylvania: Annual Field Conference of Pennsylvania Geologists, 71st, Red Rock, Pa., [Guidebook](#), 129 p.

Braun, D. D., and Inners, J. D., 1998, Ricketts Glen State Park, Luzerne, Sullivan, and Columbia Counties—The rocks, the Glens, and the falls (2nd ed.): Pennsylvania Geological Survey, 4th ser., [Trail of Geology 16-013.0](#), 10 p.

[Ricketts Glen State Park](#) web page of DCNR.

Top right: Middle drop of Kitchen Creek Falls.

Bottom right: Lowest part of Kitchen Creek Falls and Leavenworth Pool, just below the falls.