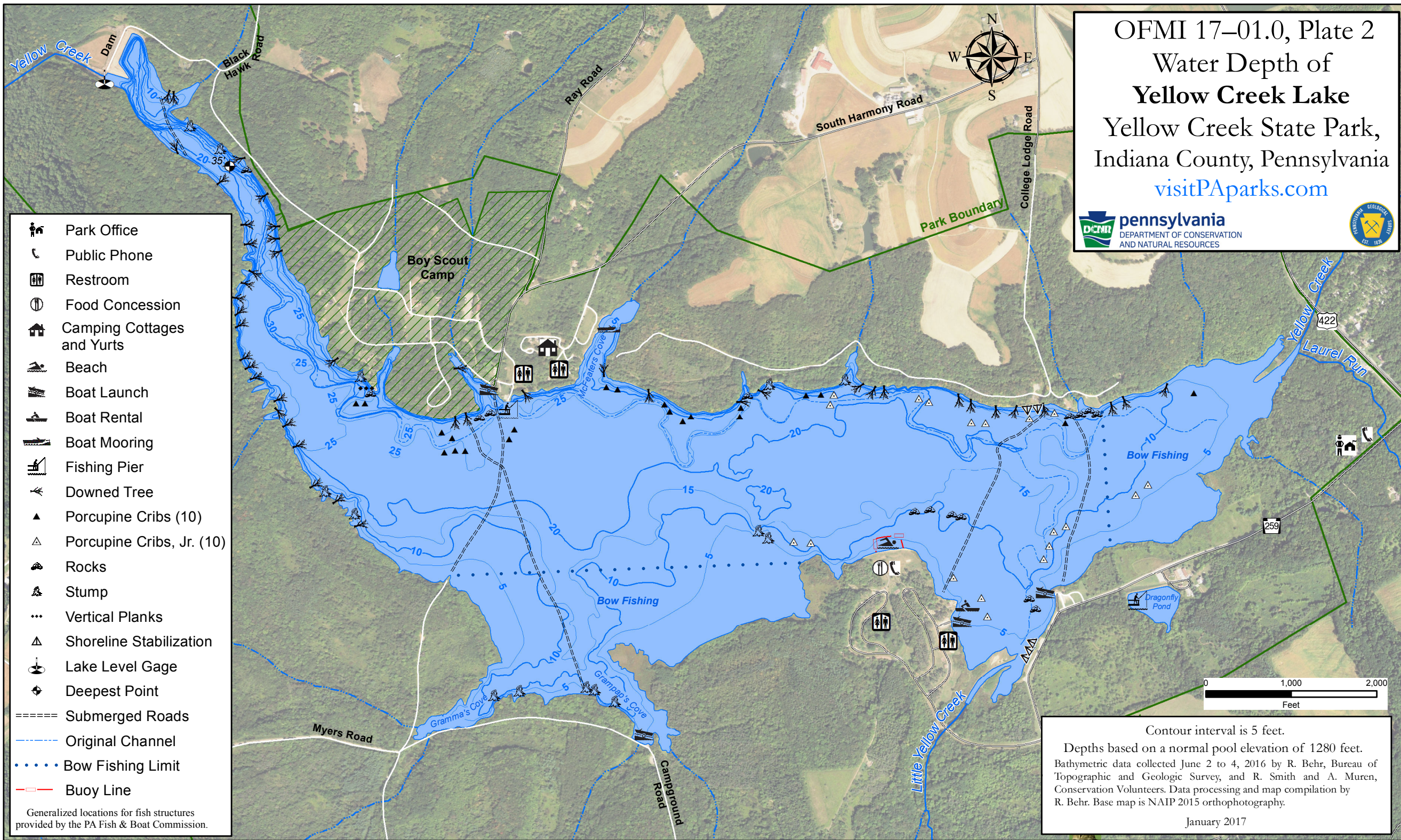


OFMI 17-01.0, Plate 2  
Water Depth of  
**Yellow Creek Lake**  
Yellow Creek State Park,  
Indiana County, Pennsylvania  
[visitPAParks.com](http://visitPAParks.com)



- Park Office
  - Public Phone
  - Restroom
  - Food Concession
  - Camping Cottages and Yurts
  - Beach
  - Boat Launch
  - Boat Rental
  - Boat Mooring
  - Fishing Pier
  - Downed Tree
  - Porcupine Cribs (10)
  - Porcupine Cribs, Jr. (10)
  - Rocks
  - Stump
  - Vertical Planks
  - Shoreline Stabilization
  - Lake Level Gage
  - Deepest Point
  - Submerged Roads
  - Original Channel
  - Bow Fishing Limit
  - Buoy Line
- Generalized locations for fish structures provided by the PA Fish & Boat Commission.



Contour interval is 5 feet.  
Depths based on a normal pool elevation of 1280 feet.  
Bathymetric data collected June 2 to 4, 2016 by R. Behr, Bureau of Topographic and Geologic Survey, and R. Smith and A. Muren, Conservation Volunteers. Data processing and map compilation by R. Behr. Base map is NAIP 2015 orthophotography.  
January 2017