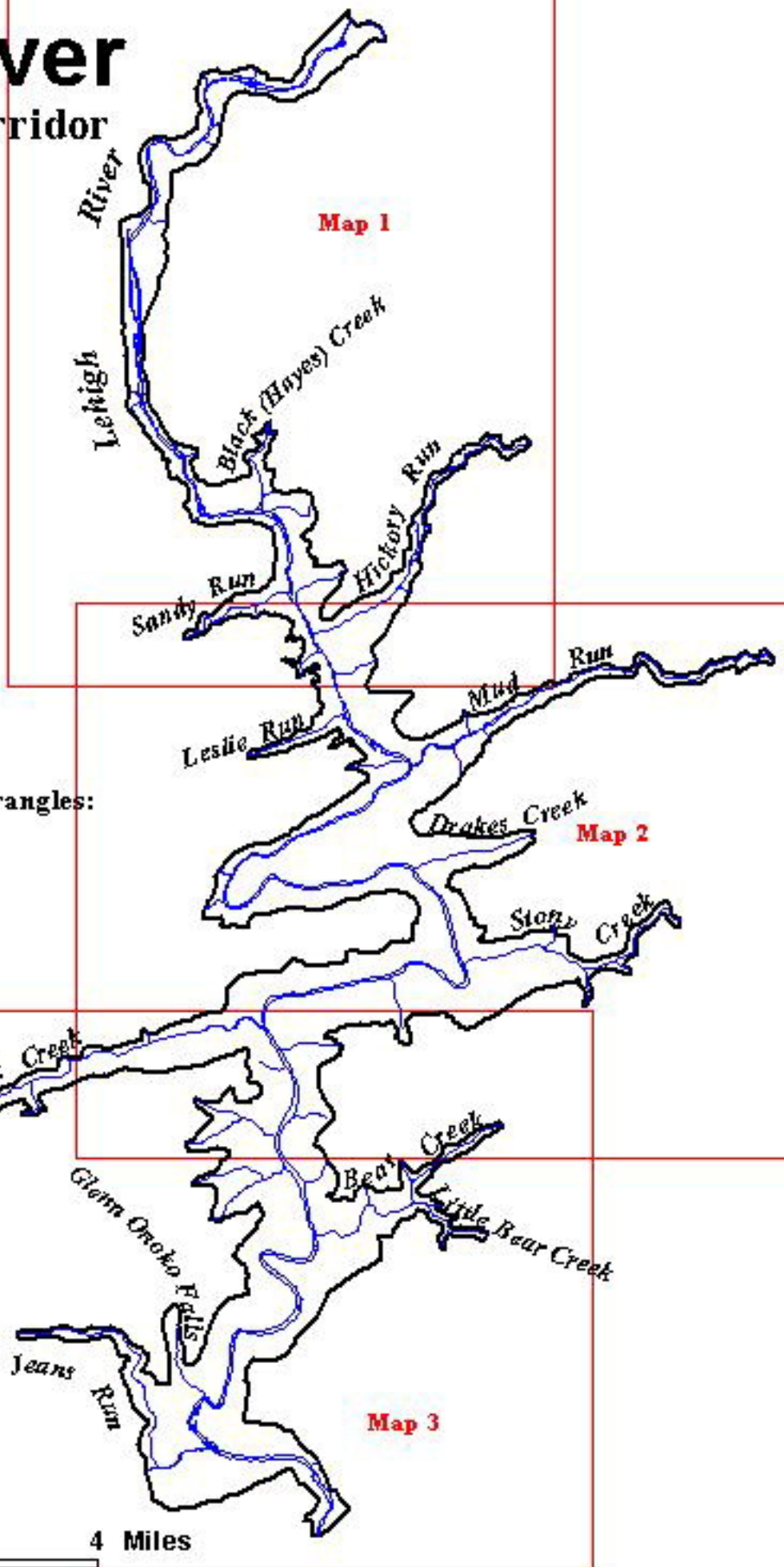


Lehigh River

And Designated Corridor

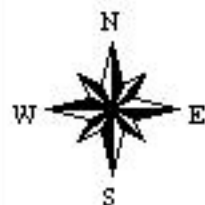
Managing Organization:

DCNR, Bureau of State Parks
400 Market Street
Harrisburg, PA 17105
(570) 427-8161
63.95 River Miles
Designated April 5, 1982
Legislative Act # 1982-71



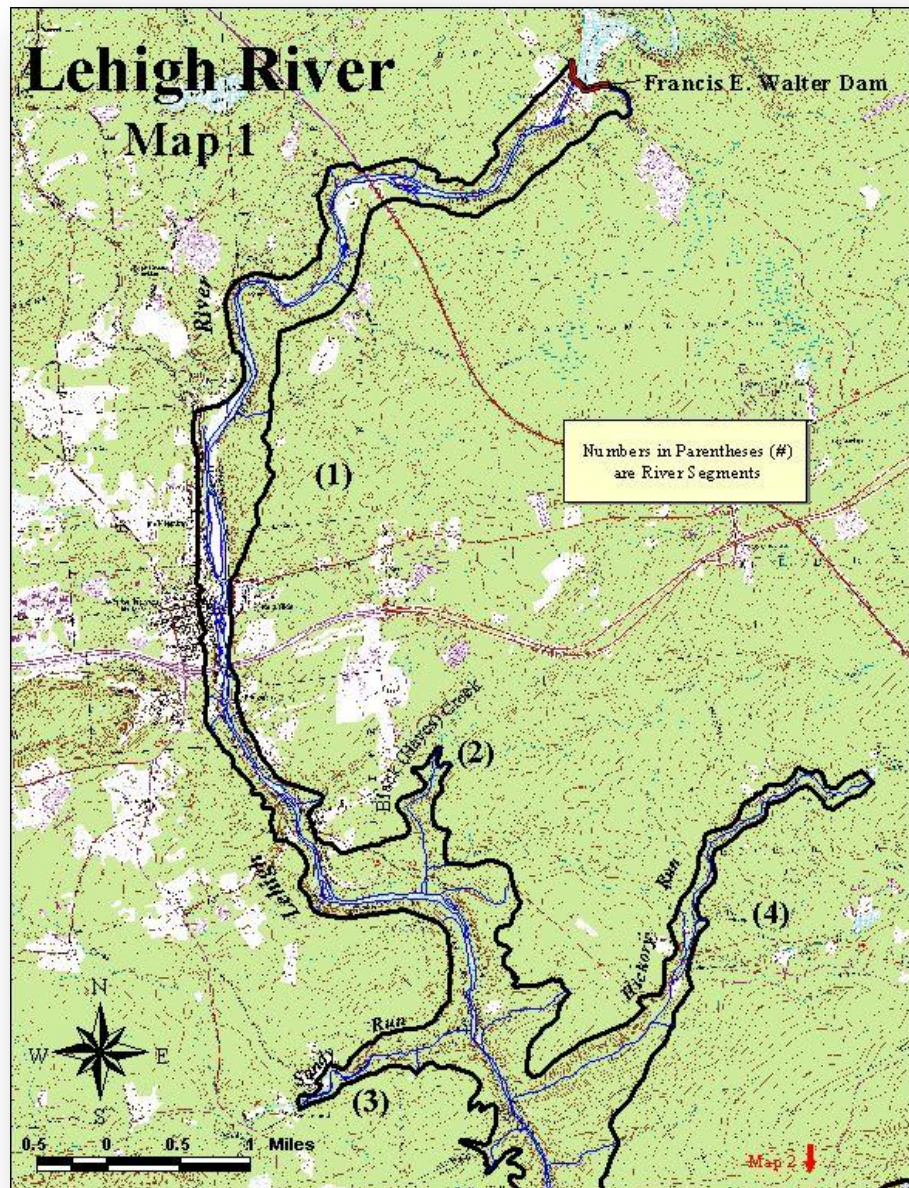
Corresponding 7.5 Minute Quadrangles:

White Haven	• Hickory Run
Weatherly	• Christmans
Nesquehoning	• Lehighton



2 0 2 4 Miles

Lehigh River (Map 1)



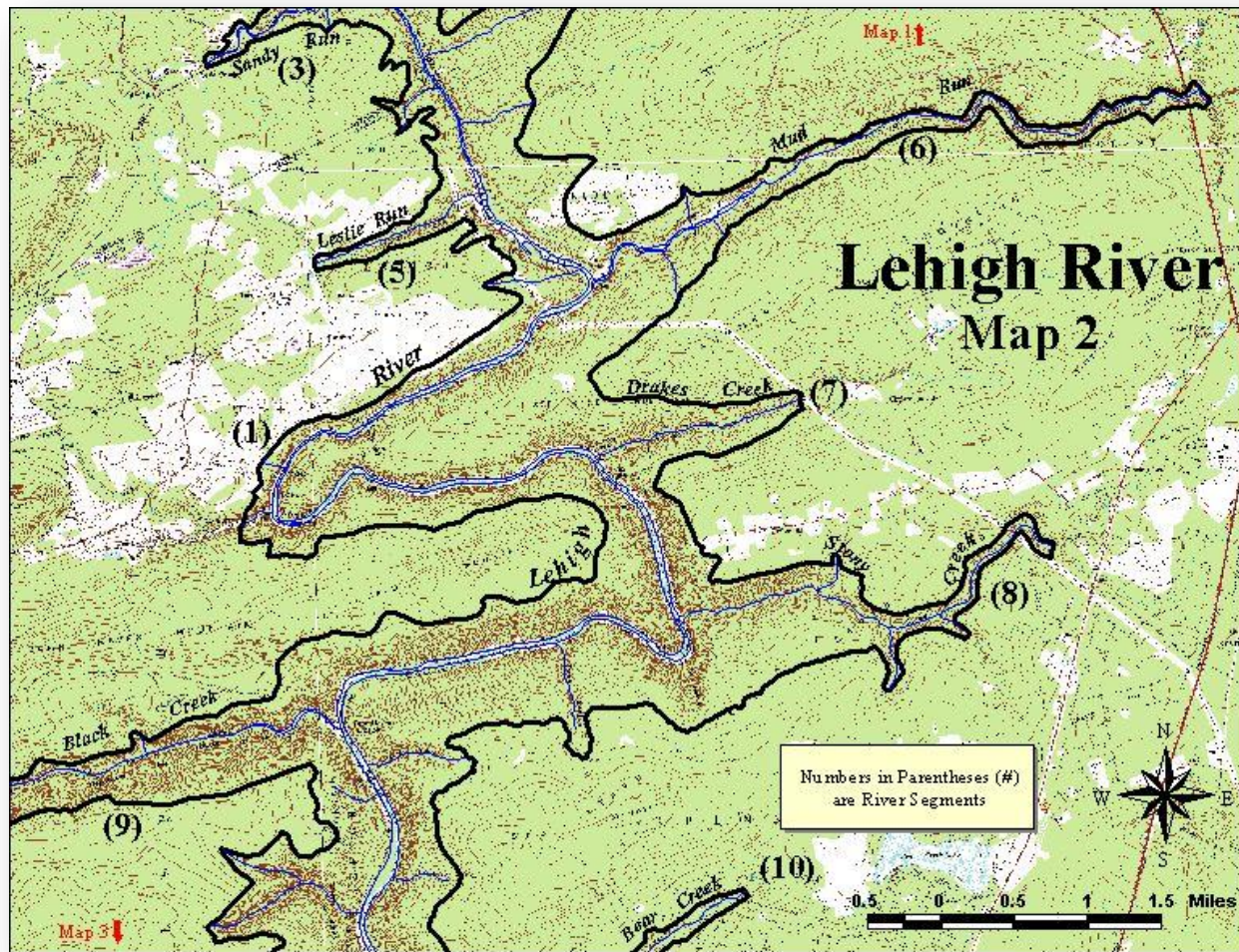
Segment Designation (1) Scenic (2) Scenic (3) Wild (4) Scenic

Segment
#

Location Description

- 1 LEHIGH RIVER; from Francis E. Walter Dam to Benchmark 548 at Bear Mountain, Jim Thorpe, PA.
- 2 BLACK (HAYES) CREEK; from Fourth Run to confluence with the Lehigh River.
- 3 SANDY RUN; from the old railroad crossing to confluence with the Lehigh River.
- 4 HICKORY RUN; from Hickory Run Lake to confluence with the Lehigh River

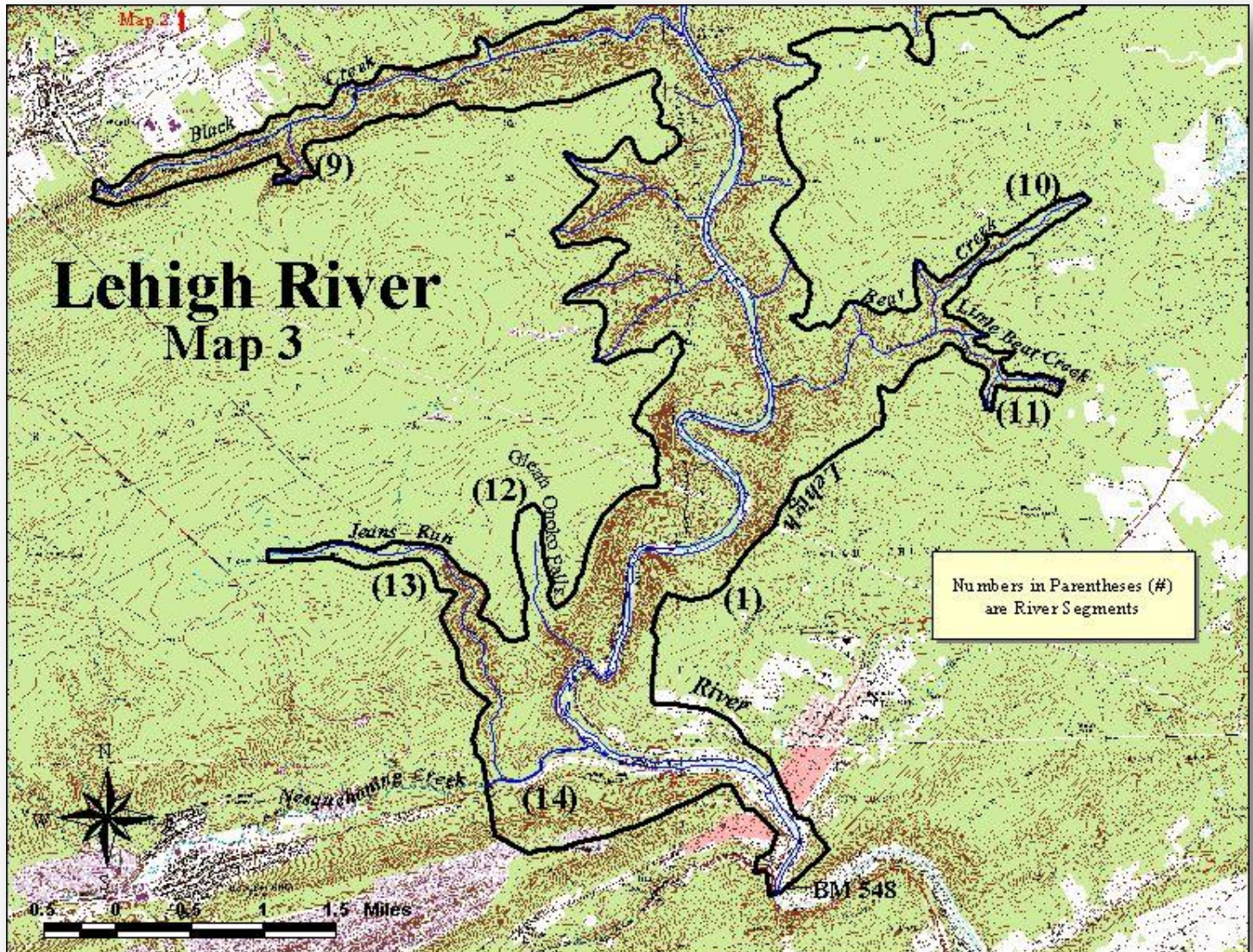
Lehigh River (Map 2)



Segment Designation (1) Scenic (3) Wild (5) Scenic (6) Scenic (7) Scenic (8) Wild (9) Scenic (10) Wild

Segment #	Location Description
1	LEHIGH RIVER; from Francis E. Walter Dam to Benchmark 548 at Bear Mountain, Jim Thorpe, PA.
3	SANDY RUN; from the old railroad crossing to confluence with the Lehigh River.
5	LESLIE RUN; from Poor Man's Pond to confluence with the Lehigh River.
6	MUD RUN; from Panther Creek to confluence with the Lehigh River.
7	DRAKES CREEK; from junction with unnamed tributary below Christmans, PA to confluence with the Lehigh River.
8	STONY CREEK; from Yellow Run to confluence with the Lehigh River.
9	BLACK CREEK; from Quakake Creek to confluence with the Lehigh River.
10	BEAR CREEK; from unnamed tributary, below Bear Creek Dam to confluence with the Lehigh River.

Lehigh River (Map 3)



Segment Designation (1) Scenic (10) Wild (11) Wild (12) Wild (13) Wild (14) Scenic

Segment #	Location Description
1	LEHIGH RIVER; from Francis E. Walter Dam to Benchmark 548 at Bear Mountain, Jim Thorpe, PA.
10	BEAR CREEK; from unnamed tributary, below Bear Creek Dam to confluence with the Lehigh River.
11	LITTLE BEAR CREEK; from headwaters to confluence with the Lehigh River.
12	GLENN ONOKO FALLS; from headwaters to confluence with the Lehigh River.
13	JEANS RUN; from headwaters to confluence with Nesquehoning Creek.
14	NESQUEHONING CREEK; from confluence with Jeans Run to confluence with the Lehigh River.