

Sprout State Forest Whiskey Springs ATV Trail System

CLINTON COUNTY, PENNSYLVANIA
Department of Conservation
and Natural Resources
Bureau of Forestry
50 Miles of Summer and Winter Trail



State Forest

State Park

Natural Area

Open Area

Hazard Area

H1

H2

H3

H1

H2

H3

H1

H2

H3

HELIPAD (DECIMAL DEGREE LAT. LONG.)
(41.34695, -77.87274)

HELIPAD (DECIMAL DEGREE LAT. LONG.)
(41.34463, -77.88703)

HELIPAD (DECIMAL DEGREE LAT. LONG.)
(41.38915, -77.88429)

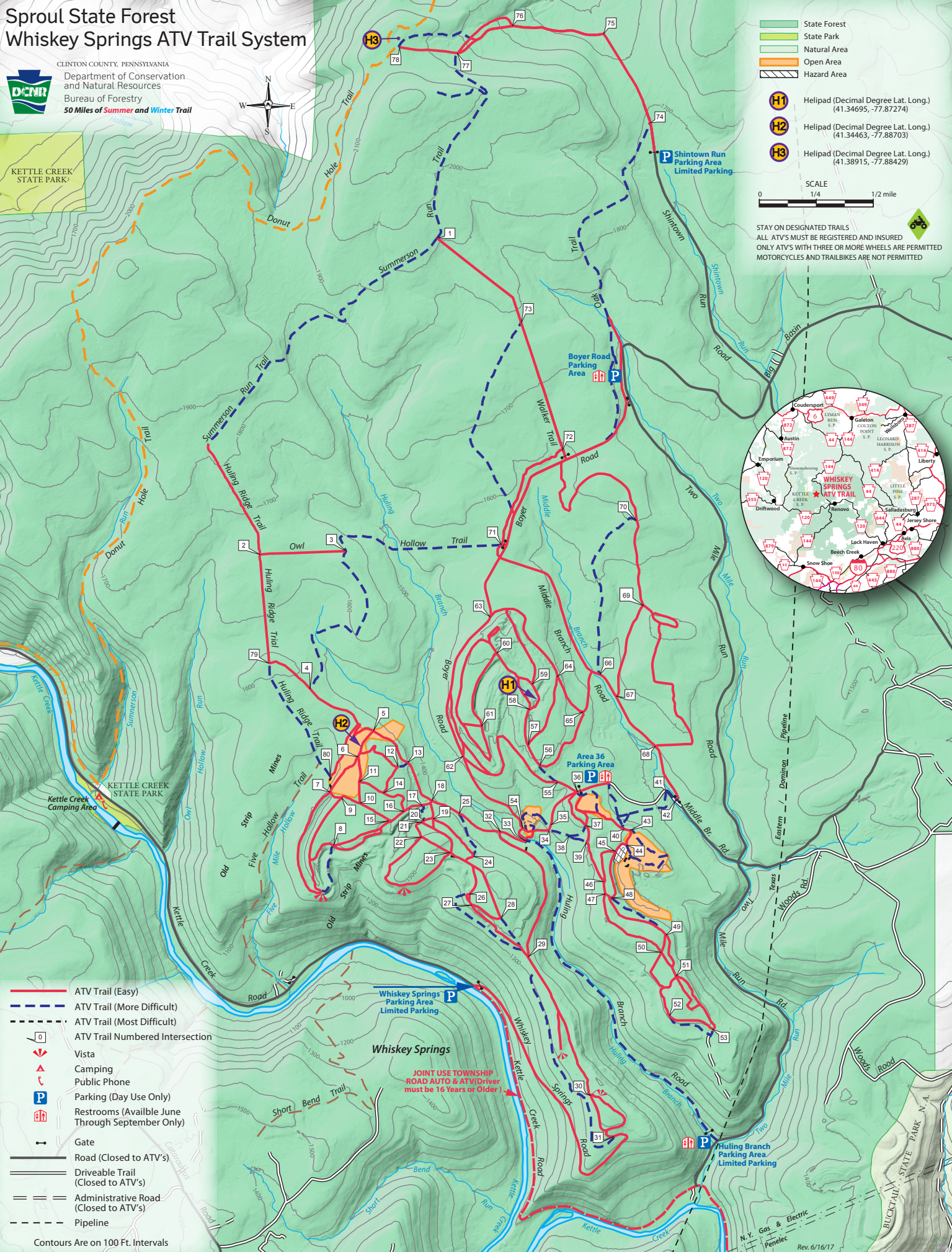
SCALE

0 1/4 1/2 mile

STAY ON DESIGNATED TRAILS
ALL ATVS MUST BE REGISTERED AND INSURED
ONLY ATVS WITH THREE OR MORE WHEELS ARE PERMITTED
MOTORCYCLES AND TRAILBIKES ARE NOT PERMITTED

- ATV Trail (Easy)
- ATV Trail (More Difficult)
- ATV Trail (Most Difficult)
- ATV Trail Numbered Intersection
- Vista
- Camping
- Public Phone
- Parking (Day Use Only)
- Restrooms (Available June Through September Only)
- Gate
- Road (Closed to ATV's)
- Driveable Trail (Closed to ATV's)
- Administrative Road (Closed to ATV's)
- Pipeline

Contours are on 100 Ft. Intervals



Rev. 6/16/17