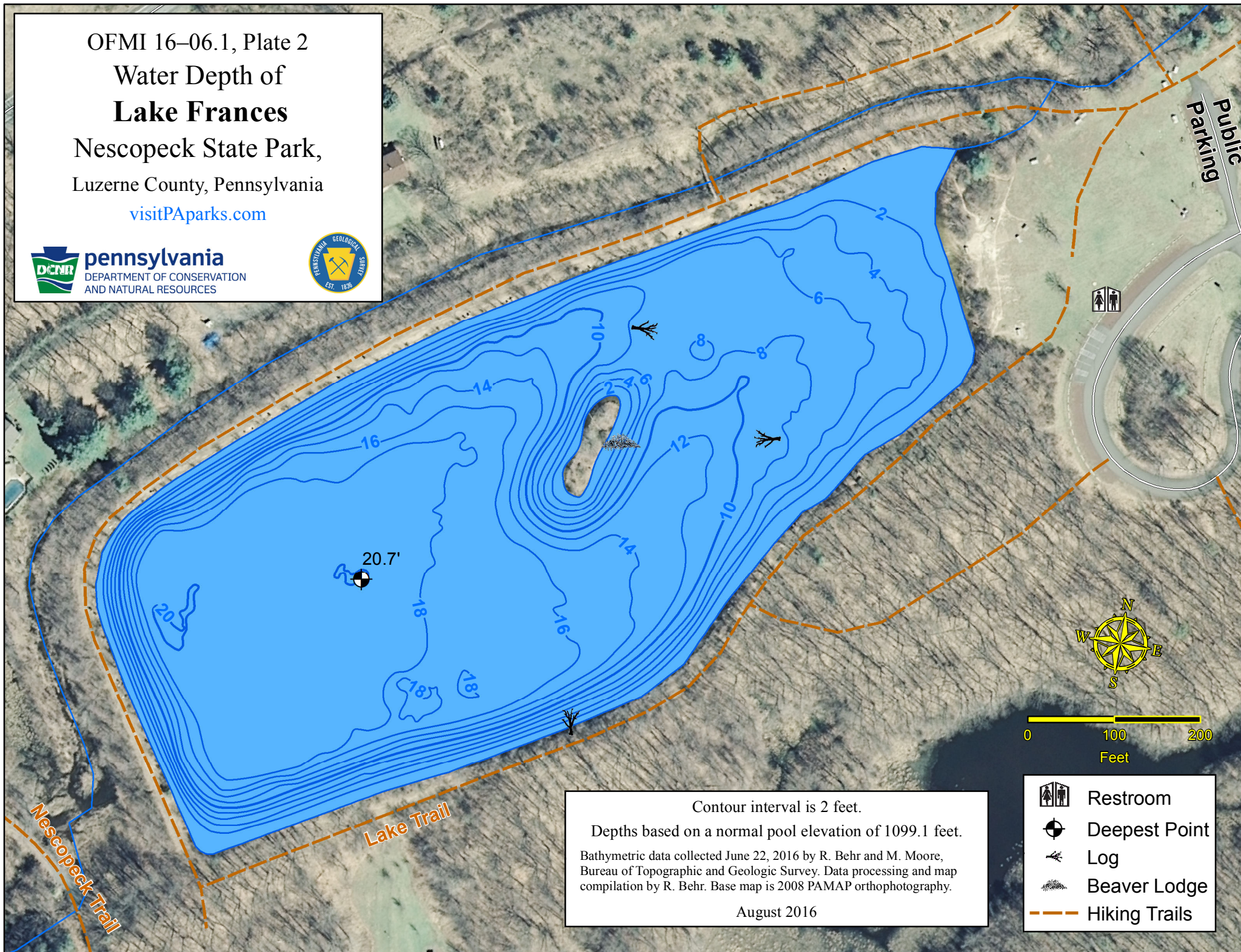


OFMI 16-06.1, Plate 2
Water Depth of
Lake Frances
Nescopeck State Park,
Luzerne County, Pennsylvania
visitPAparks.com



Contour interval is 2 feet.

Depths based on a normal pool elevation of 1099.1 feet.

Bathymetric data collected June 22, 2016 by R. Behr and M. Moore,
Bureau of Topographic and Geologic Survey. Data processing and map
compilation by R. Behr. Base map is 2008 PAMAP orthophotography.

August 2016



Restroom



Deepest Point



Log



Beaver Lodge



Hiking Trails