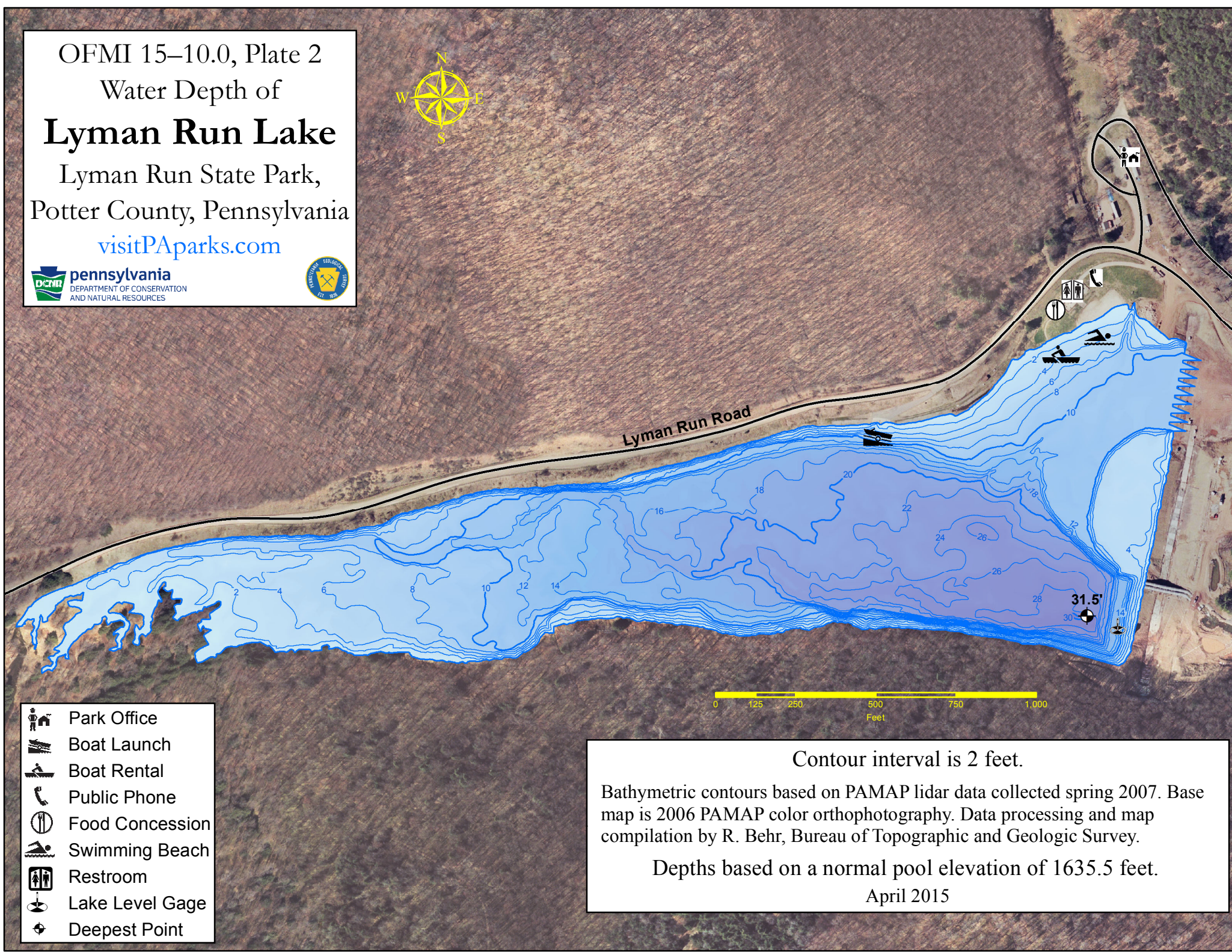


OFMI 15-10.0, Plate 2
Water Depth of
Lyman Run Lake
Lyman Run State Park,
Potter County, Pennsylvania
visitPAparks.com



Contour interval is 2 feet.

Bathymetric contours based on PAMAP lidar data collected spring 2007. Base map is 2006 PAMAP color orthophotography. Data processing and map compilation by R. Behr, Bureau of Topographic and Geologic Survey.

Depths based on a normal pool elevation of 1635.5 feet.

April 2015