

OFMI 15–20.0, Plate 1

Water Depth of

Lake Arthur

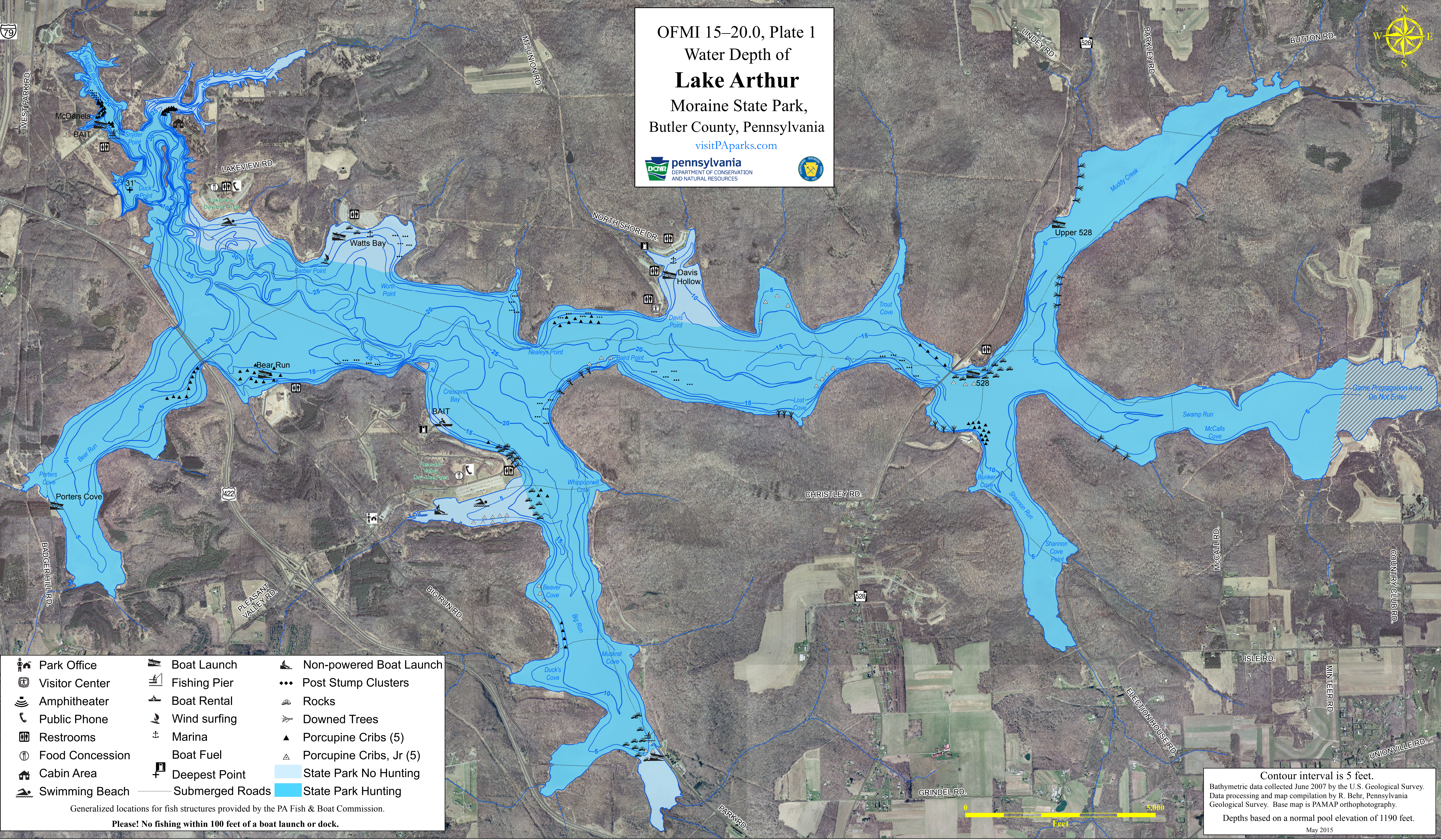
Moraine State Park,
Butler County, Pennsylvania

visitPAParks.com



pennsylvania
DEPARTMENT OF CONSERVATION
AND NATURAL RESOURCES





- | | | |
|-----------------|-----------------|-------------------------|
| Park Office | Boat Launch | Non-powered Boat Launch |
| Visitor Center | Fishing Pier | Post Stump Clusters |
| Amphitheater | Boat Rental | Rocks |
| Public Phone | Wind surfing | Downed Trees |
| Restrooms | Marina | Porcupine Cribs (5) |
| Food Concession | Boat Fuel | Porcupine Cribs, Jr (5) |
| Cabin Area | Deepest Point | State Park No Hunting |
| Swimming Beach | Submerged Roads | State Park Hunting |

Generalized locations for fish structures provided by the PA Fish & Boat Commission.

Please! No fishing within 100 feet of a boat launch or dock.

Contour interval is 5 feet.
Bathymetric data collected June 2007 by the U.S. Geological Survey.
Data processing and map compilation by R. Behr, Pennsylvania Geological Survey. Base map is PAMAP orthophotography.
Depths based on a normal pool elevation of 1190 feet.
May 2015