

Map 23-04.0, Plate 2  
Water Depth of  
**Chapman Lake**  
Chapman State Park,  
Warren County, Pennsylvania

[visitPAparks.com](http://visitPAparks.com)

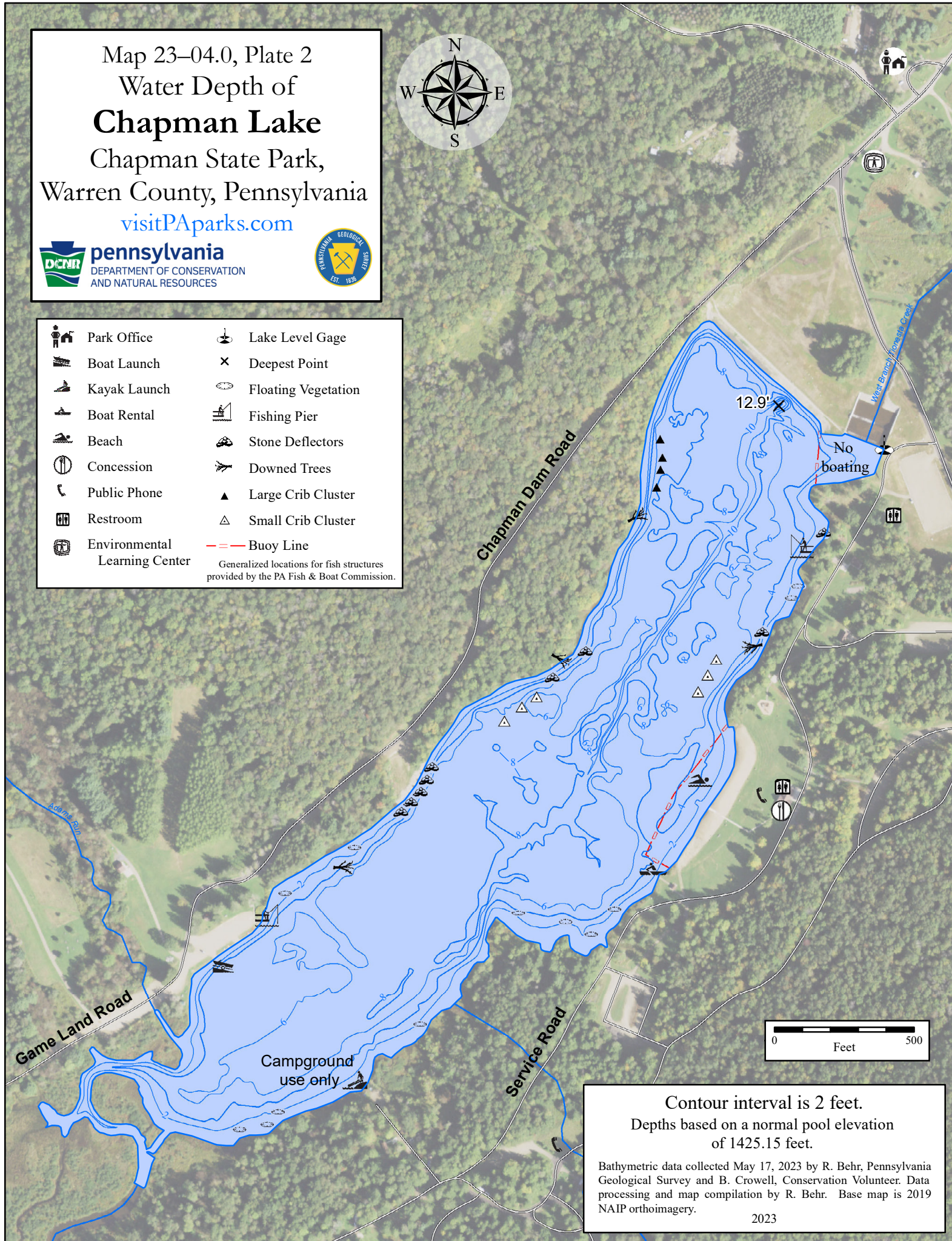


**pennsylvania**  
DEPARTMENT OF CONSERVATION  
AND NATURAL RESOURCES



- |  |                               |  |                     |
|--|-------------------------------|--|---------------------|
|  | Park Office                   |  | Lake Level Gage     |
|  | Boat Launch                   |  | Deepest Point       |
|  | Kayak Launch                  |  | Floating Vegetation |
|  | Boat Rental                   |  | Fishing Pier        |
|  | Beach                         |  | Stone Deflectors    |
|  | Concession                    |  | Downed Trees        |
|  | Public Phone                  |  | Large Crib Cluster  |
|  | Restroom                      |  | Small Crib Cluster  |
|  | Environmental Learning Center |  | Buoy Line           |

Generalized locations for fish structures  
provided by the PA Fish & Boat Commission.



Contour interval is 2 feet.  
Depths based on a normal pool elevation  
of 1425.15 feet.

Bathymetric data collected May 17, 2023 by R. Behr, Pennsylvania Geological Survey and B. Crowell, Conservation Volunteer. Data processing and map compilation by R. Behr. Base map is 2019 NAIP orthoimagery.

2023