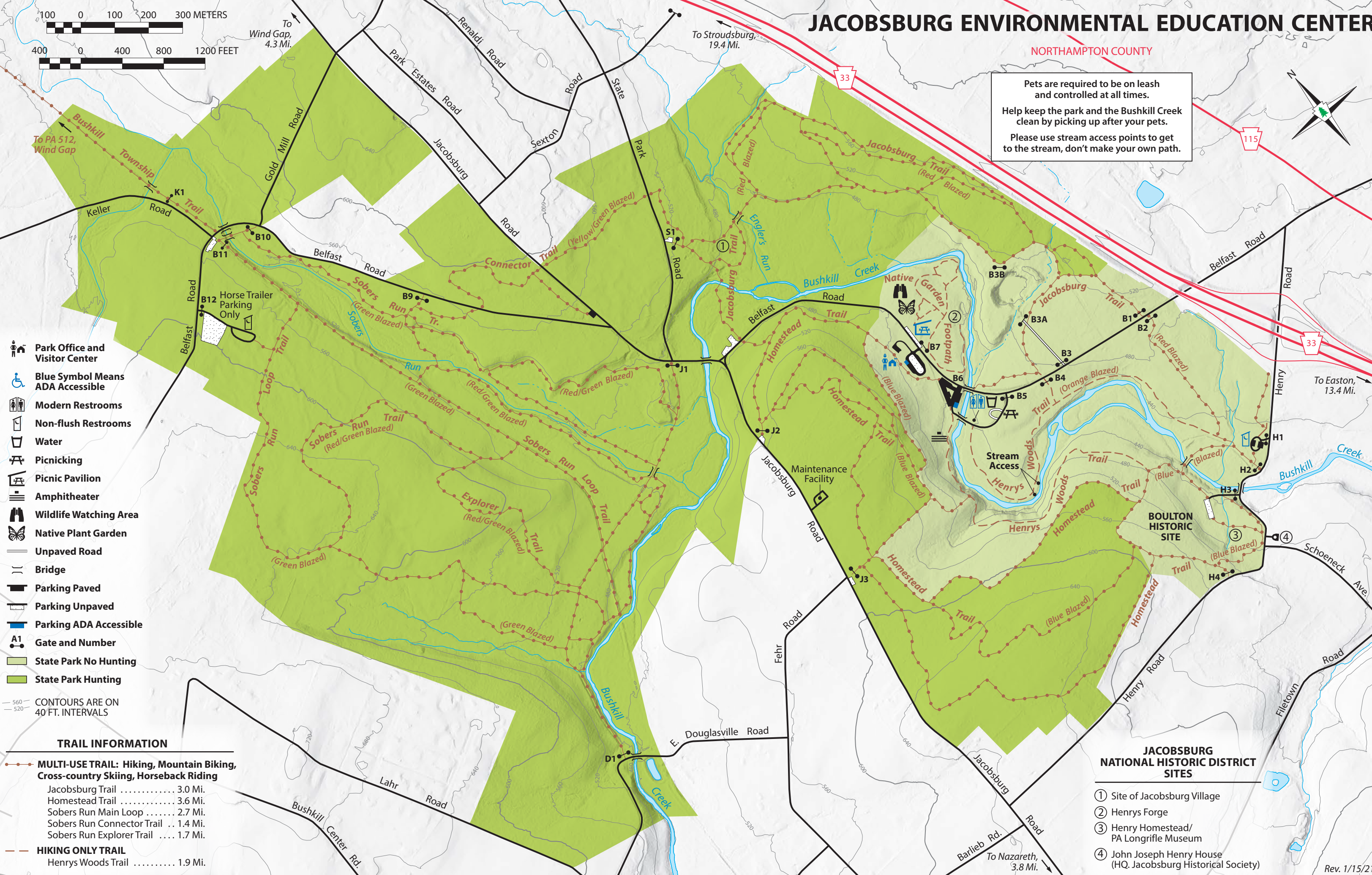
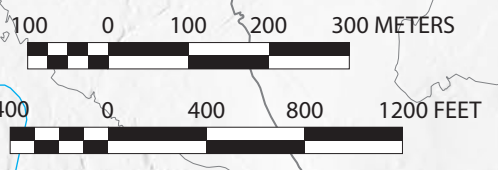
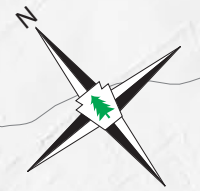


# JACOBSBURG ENVIRONMENTAL EDUCATION CENTER

NORTHAMPTON COUNTY

Pets are required to be on leash and controlled at all times.  
 Help keep the park and the Bushkill Creek clean by picking up after your pets.  
 Please use stream access points to get to the stream, don't make your own path.



- Park Office and Visitor Center
- Blue Symbol Means ADA Accessible
- Modern Restrooms
- Non-flush Restrooms
- Water
- Picnicking
- Picnic Pavilion
- Amphitheater
- Wildlife Watching Area
- Native Plant Garden
- Unpaved Road
- Bridge
- Parking Paved
- Parking Unpaved
- Parking ADA Accessible
- Gate and Number
- State Park No Hunting
- State Park Hunting

CONTOURS ARE ON 40 FT. INTERVALS

**TRAIL INFORMATION**

	<b>MULTI-USE TRAIL: Hiking, Mountain Biking, Cross-country Skiing, Horseback Riding</b>
Jacobsburg Trail	3.0 Mi.
Homestead Trail	3.6 Mi.
Sobers Run Main Loop	2.7 Mi.
Sobers Run Connector Trail	1.4 Mi.
Sobers Run Explorer Trail	1.7 Mi.
	<b>HIKING ONLY TRAIL</b>
Henrys Woods Trail	1.9 Mi.

- JACOBSBURG NATIONAL HISTORIC DISTRICT SITES**
- ① Site of Jacobsburg Village
  - ② Henrys Forge
  - ③ Henry Homestead/ PA Longrifle Museum
  - ④ John Joseph Henry House (HQ. Jacobsburg Historical Society)