



Pennsylvania State Parks Mission

The primary purpose of Pennsylvania state parks is to provide opportunities for enjoying healthful outdoor recreation and serve as outdoor classrooms for environmental education. In meeting these purposes, the conservation of the natural, scenic, aesthetic, and historical values of parks should be given first consideration. Stewardship responsibilities should be carried out in a way that protects the natural outdoor experience for the enjoyment of current and future generations.



Printed on recycled paper

2021

KEYSTONE STATE PARK

The 1,200-acre Keystone State Park is great for day-trips and family vacations year round. Camping, modern cabins, many trails, and a lake are all within walking distance, providing an ideal setting for wildlife watching and outdoor adventures. The park is within easy driving distance from the Pittsburgh metropolitan area, the Laurel Highlands, and their many attractions.

Directions

GPS DD: Lat. 40.37608 Long. -79.37995

The park is in Derry Township, Westmoreland County, three miles from the intersection of PA 981 and US 22. The park office is on Keystone Park Road, SR 1018. The campground, cabins, and visitor center are on Stone Lodge Road and can be reached from Slag Road, T 860.

Reservations

Make online reservations at www.visitPAparks.com or call toll-free 888-PA-PARKS (888-727-2757), 7:00 AM to 5:00 PM, Monday to Saturday.

RECREATIONAL OPPORTUNITIES

Spend the Day



BOATING: electric motors only

The 78-acre Keystone Lake has a public boat launch and mooring area on the north shore by the breast of the dam.

Motorboats must display a boat registration from any state. Non-powered boats must display one of the following: boat registration from any state; launch permit or mooring permit from Pennsylvania State Parks, available at most state park offices; launch use permit from the Pennsylvania Fish and Boat Commission.

Life jackets must be worn in accordance with Pennsylvania Fish and Boat Commission regulations and laws.



FISHING: The 78-acre Keystone Lake has warmwater and coldwater fishing, with trout stockings throughout the year. Warmwater fish are largemouth bass, tiger muskellunge, black crappies, yellow perch, carp, and brown bullhead catfish.

A fishing area by the spillway is ADA accessible. Fishing is prohibited at the beach, boat launches, and mooring areas.

Keystone Lake is a Big Bass Lake and special regulations apply. Pennsylvania Fish and Boat Commission regulations and laws apply.

BICYCLING: Lakeside Trail is excellent for bikes of all types. This two-mile, level route loops around the lake on park roads and gravel walkways. Bikes must stay on park roads or gravel walkways. All other trails are foot-traffic only.

HUNTING AND FIREARMS: About 800 acres of Keystone State Park are open to hunting, trapping, and the training of dogs during established seasons. Common game species are deer, turkeys, squirrels, pheasants, and rabbits. Hunting on the lake and surrounding area is prohibited.

Hunting woodchucks, also known as groundhogs, is prohibited. Dog training is

Stay the Night



CAMPING: modern restrooms with showers

About 100 tent and trailer sites are available from the first Friday in April to the third Sunday of October. Lakeside Campground is adjacent to the lake. Hillside Campground is in a more remote area of the park and accommodates campers with pets. Each campground has a modern shower house. A sanitary dump station is available. Shower facilities may not be available after October 1.

Enjoy the Winter



Ice fishing, ice skating, sledding, and cross-country skiing are popular when conditions permit.

The day use area of the park and the cabins provide excellent opportunities for winter sports. The park is only 30 minutes from the snow country of the Laurel Highlands and Forbes State Forest.

through lowland marsh near the head end of the lake, connects to McCune Run trail, and passes through an impressive stand of conifers that form a scenic tunnel.



Lakeside Loop: 2.2 miles, easiest hiking

This loop goes around the lake on park roads and gravel walkways. This scenic and fairly level path offers an excellent view of waterfowl and other aquatic life. Bikes are permitted.

McCune Run Trail: 1.8 miles, yellow diamonds, more difficult hiking

From the trailhead on Keystone Park Road, the trail passes along an active beaver dam and wetland meadow before looping through deciduous forest and stands of pines. McCune Run Trail connects to Davis Run and Strawcutter trails.

Pine Trail: 0.3 mile loop, easiest hiking

This trail loops through plantations of red, white, and Table Mountain pine trees. About halfway through the trail, hikers can view farm fields and large chestnut oak trees.

Stone Lodge Trail: 1.8 miles, yellow diamonds, more difficult hiking

The path starts from the James A. Kell Visitor Center parking lot or from the far side of the visitor center. This challenging walk starts with a fairly steep climb that winds through hardwoods to ridgetop conifers. In spring, the hill behind the center is covered in spring ephemeral wildflowers, which bloom before trees get leaves. At the top of the hill, the trail becomes a loop for a total distance of 1.8 miles. Two shortcut trails bisect the loop, making it possible to hike a shorter distance. Following the Green Shortcut will make a 1.1-mile hike. Following the Blue Shortcut will make a 1.3-mile hike.

Strawcutter Trail: 2 miles, green diamonds, easiest hiking

From the trailhead on Strawcutter Road, the trail meanders through a meadow and crosses McCune Run before plunging into densely vegetated deciduous forest. Rambling over a series of small hills, the trail slowly ascends, and the understory becomes more open. The trail rises to one of the highest elevations in the park, while passing mature stands of impressive, old oaks, large black cherries, and beach trees. Just under a quarter mile of this loop is shared with McCune Run Trail.

Tell us about your hike at: www.ExplorePATrails.com

YURTS: Two yurts are located in Lakeside Campground. These round, canvas and wood-walled tents have a wooden deck and sleep four or five people in bunk beds. Yurts have a cooking stove, microwave, refrigerator, countertop, table, chairs, electric heat, outlets, fire ring, picnic table, and are adjacent to a water pump. One yurt is ADA accessible.



Check the park website or contact the park office for ice and snow conditions before any planned outing.

ICE SAFETY: Ice thickness is not monitored. For your safety, make sure ice is at least 4" thick for a single user and 7" thick for a small group. Always carry safety equipment.

WILDLIFE WATCHING



Tiger swallowtail butterfly on joe-pye-weed

Keystone State Park hosts a wide range of plant and animal life. The James A. Kell Visitor Center has a bird checklist and information about the natural sites and wildlife of the area. Each season provides an opportunity to see diverse plants and animals.

In spring, wildflowers like hepaticas, spring beautys, bloodroots, cutleaf toothworts, trout lilies, and rue anemones bloom before the trees leaf out. Warblers, kinglets, mergansers, herons, buffleheads, osprey, and many other

birds migrate through the park. Some birds only stop for a brief refueling visit, while others stay for the summer.

In summer, many young birds and mammals are born and can be seen, but be sure not to handle or feed wild animals. Fireflies dance and display their lights in midsummer. Frogs and insects sing a nighttime chorus in the marsh area in the eastern end of the lake. Yarrow, joe-pye-weeds, ironweeds, bonesets, fire pinks, goldenrods, common milkweeds, butterfly weeds, and daisies peak in summer, providing food for butterflies.

The shorter days and cooler temperatures of autumn cause the deciduous trees to erupt with color before dropping their leaves. Birds migrate south to their winter homes. The temperature is usually ideal for hiking and exploring.

In winter, you can find animal tracks in the snow and find bird nests that are revealed after leaves have fallen from the trees. Year-round birds like chickadees, cardinals, nuthatches, and woodpeckers travel in groups hunting for seeds and insects.

LEARN, EXPERIENCE, CONNECT

Keystone State Park offers a wide variety of programs April through October. Program topics include birds, pollinators, wildflowers, stream and forest ecology, wildlife, coal mining history, and more.

The ADA accessible James A. Kell Visitor Center is a historic stone lodge located in the overnight area of the park. The center contains an introduction to history, flora and fauna of the park, educational handouts, and historic artifacts.

Curriculum-based environmental education programs are available to schools and organized groups. Call the park office to schedule a group program. A variety of professional development workshops are also offered for teachers.

Contact the park office or explore the online calendar of events, <https://events.dcnr.pa.gov>, for more information on programs and other learning experiences.

AMD WETLAND TREATMENT SYSTEM:

Below the dam, across from the entrance road to the cabins, is the former entrance to Salem 2 Mine. This entrance has been sealed and is very difficult to find. An orange liquid, called abandoned mine drainage (AMD), seeps from the mine, polluting McCune Run. Three commonwealth agencies, the Department of Conservation and Natural Resources, the Department of Environmental Protection, and the Department of General Services, and the Loyalhanna Watershed Association worked together to install an AMD Wetland Treatment System. Heavy metals and sediment are removed from the AMD as it flows through limestone-lined pipes and several ponds. The cleaned water then flows into McCune Run. A series of wayside exhibits explain the mine and the treatment system. The self-guiding tour begins in the parking lot across from Pavilion 2.

HISTORY

It is hard to imagine, but the steel mills of Pittsburgh led to the creation of Keystone State Park. The mills needed coke, partially burned coal, to make steel. To make coke, the coal companies needed to burn coal and then quickly extinguish it, thus needing large amounts of water.

In 1909, the Keystone Coal and Coke Company purchased land at the meeting of McCune and Davis runs. The company then dredged and dammed the stream confluence to create a lake to supply water for washing bituminous coal and to quench the coke from their coke ovens at Salem 1 Mine. The water from Keystone Lake flowed, gravity-fed, through two miles of wooden pipes to the coal washing facility. A similar pipe is on display in the visitor center.

Executives of the company used Keystone Lake for fishing, swimming, and boating. Stories about about local residents who used the lake for recreation too, although with a wary eye out for the authorities who might chase them away for trespassing.



The company built a stone lodge to be used as a meeting place for business, as well as a hunting lodge. Executives were allotted the lodge for one week a year for family vacations. Now called the James A. Kell Visitor Center, the lodge houses mining artifacts and natural history exhibits.

INFORMATION AND RESERVATIONS

Keystone State Park

1150 Keystone Park Road
Derry, PA 15627-3279
Park Office: 724-668-2939
Visitor Center: 724-668-2566
KeystoneSP@pa.gov
An Equal Opportunity Employer
www.visitPAparks.com
@KeystoneSP

Access for People with Disabilities

This symbol indicates facilities and activities that are Americans with Disabilities Act (ADA) accessible for people with disabilities. This publication text is available in alternative formats.

In an Emergency

Call 911 and contact a park employee. Directions to the nearest hospital are posted on bulletin boards and at the park office.

NEAREST HOSPITAL

Excelsa Health Latrobe Hospital
121 West Second Avenue
Latrobe, PA 15650
724-537-1000

Make online reservations at

www.visitPAparks.com or call toll-free 888-PA-PARKS (888-727-2757), 7:00 AM to 5:00 PM, Monday to Saturday.

Electric vehicle charging station

A 2-plug, electric-vehicle charging station is available for public use in the boat launch. Please move to another parking space once your vehicle has been charged.

If you need an accommodation to participate in park activities due to a disability, please contact the park you plan to visit.



Prevent tick bites by wearing clothing treated with tick repellent. Avoid areas with brush, leaf litter, or tall grass. Stay on the trail.

<https://www.cdc.gov/ticks>

Blacklegged tick (deer tick)



Actual size

Nearby Attractions

Information on nearby attractions is available from Go Laurel Highlands. 724-238-3673 www.GoLaurelHighlands.com

In nearby **Forbes State Forest**, over 50,000 acres of land are open year round for a variety of outdoor activities including hiking, hunting, fishing, horseback riding, mountain biking, and snowmobiling. 724-238-1200

Protect and Preserve our Parks

Please make your visit safe and enjoyable. Obey all posted rules and regulations and respect fellow visitors and the resources of the park.

- Be prepared and bring the proper equipment. Natural areas may possess hazards. Your personal safety and that of your family are your responsibility.
- Alcoholic beverages are prohibited.

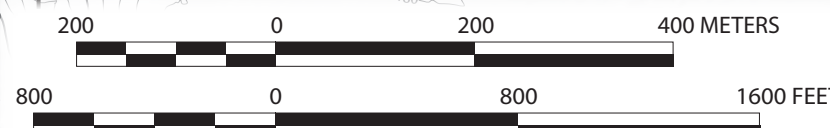
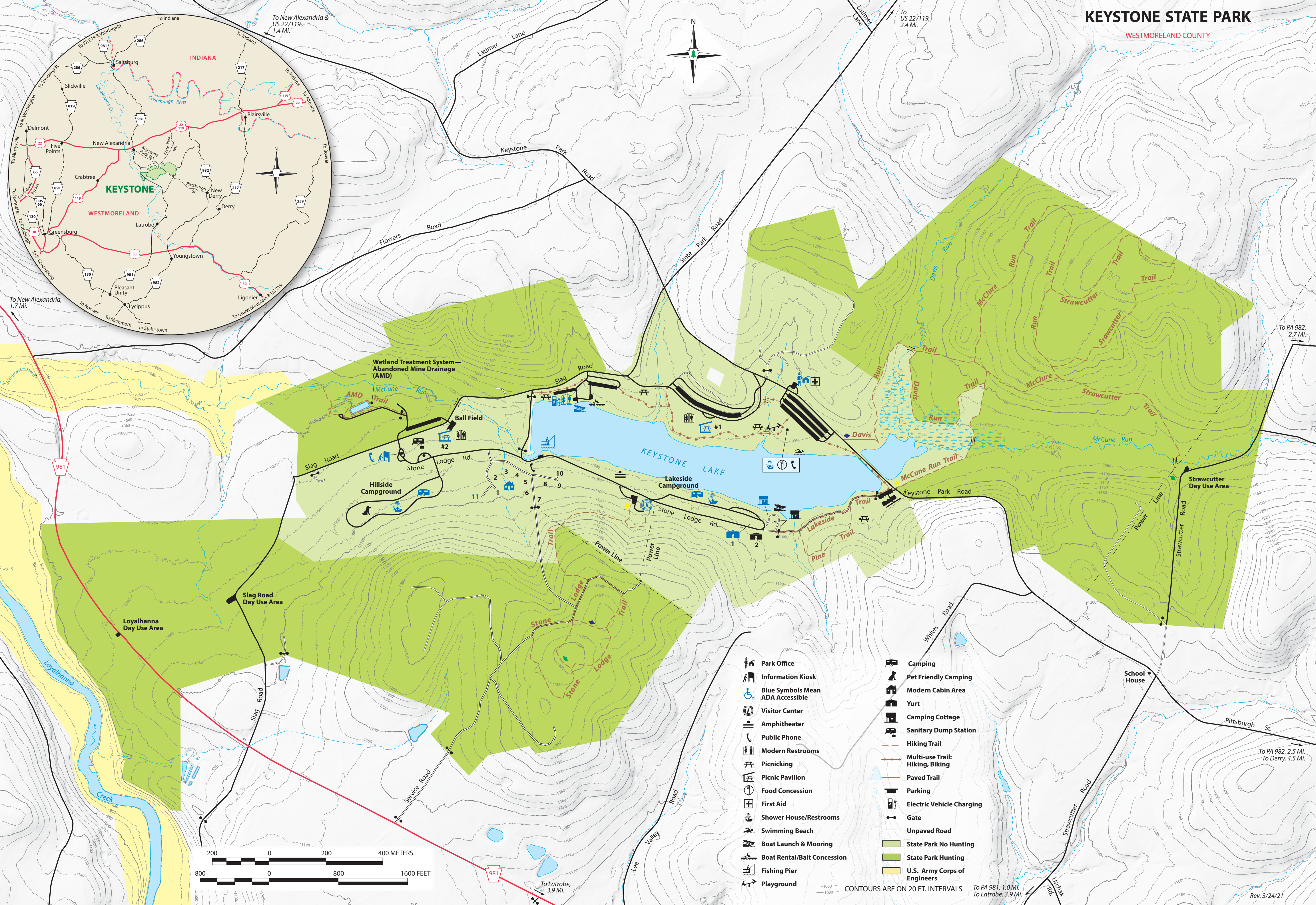
- Please camp only in designated areas and minimize your impact on the campsite.

- Firewood Advisory: Firewood may contain non-native insects and plant diseases. Bringing firewood into the park from other areas may accidentally spread pest insects and diseases that threaten park resources and the health of our forests. Use local firewood. Do not take wood home and do not leave firewood. Burn it!

- Prevent forest fires by having a fire in proper facilities and properly disposing of hot coals. Do not leave a fire unattended.

KEYSTONE STATE PARK

WESTMORELAND COUNTY



- | | |
|----------------------------------|---------------------------------|
| Park Office | Camping |
| Information Kiosk | Pet Friendly Camping |
| Blue Symbols Mean ADA Accessible | Modern Cabin Area |
| Visitor Center | Yurt |
| Amphitheater | Camping Cottage |
| Public Phone | Sanitary Dump Station |
| Modern Restrooms | Hiking Trail |
| Picnicking | Multi-use Trail: Hiking, Biking |
| Picnic Pavilion | Paved Trail |
| Food Concession | Parking |
| First Aid | Electric Vehicle Charging |
| Shower House/Restrooms | Gate |
| Swimming Beach | Unpaved Road |
| Boat Launch & Mooring | State Park No Hunting |
| Boat Rental/Bait Concession | State Park Hunting |
| Fishing Pier | U.S. Army Corps of Engineers |
| Playground | |

CONTOURS ARE ON 20 FT. INTERVALS