

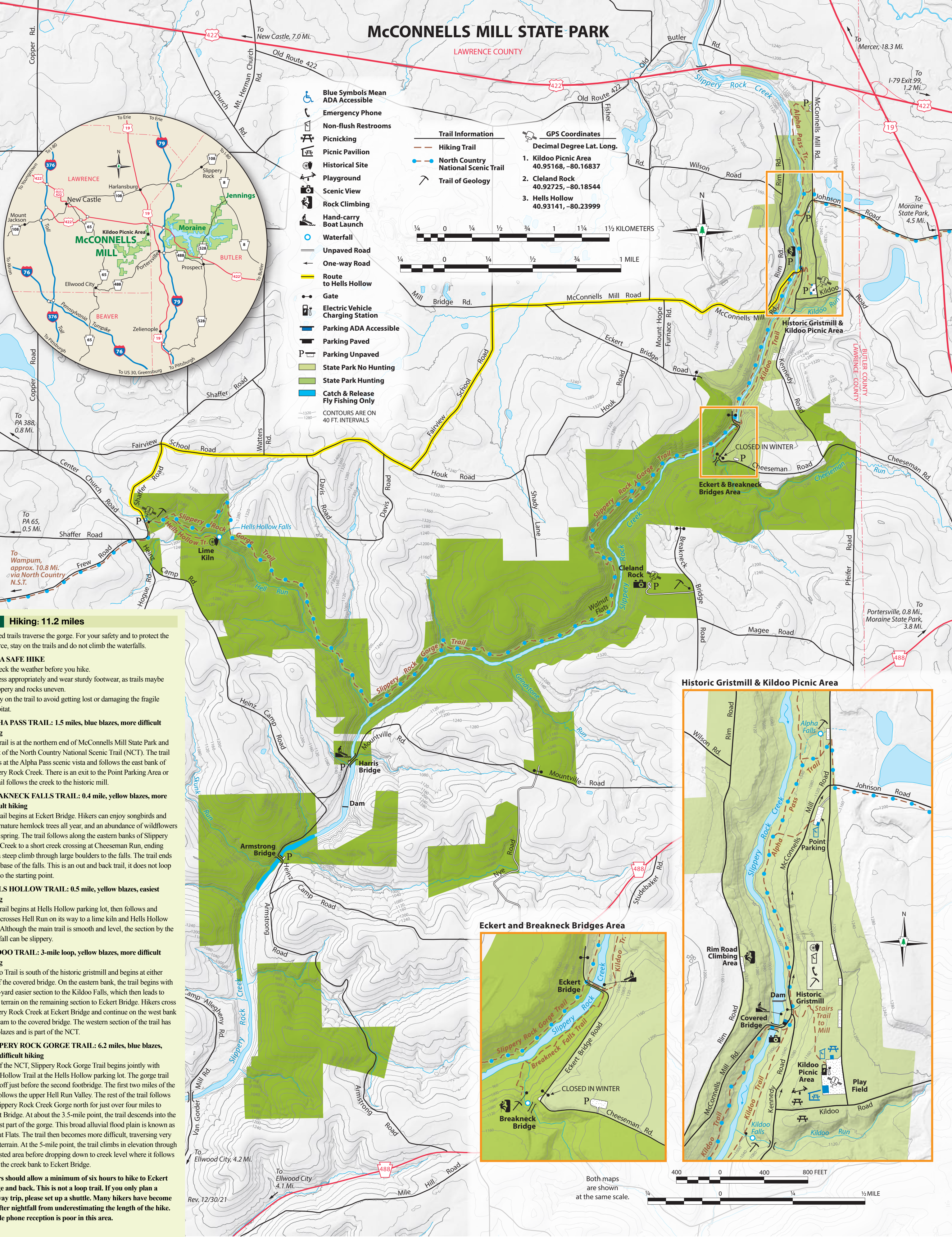
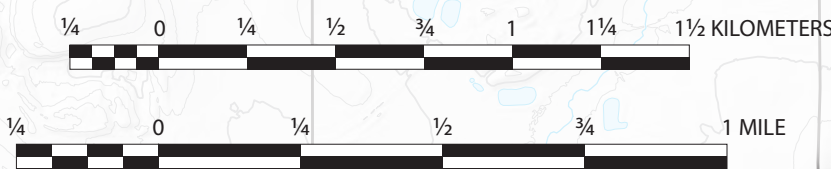
McCONNELLS MILL STATE PARK

LAWRENCE COUNTY

- Blue Symbols Mean ADA Accessible
- Emergency Phone
- Non-flush Restrooms
- Picnicking
- Picnic Pavilion
- Historical Site
- Playground
- Scenic View
- Rock Climbing
- Hand-carry Boat Launch
- Waterfall
- Unpaved Road
- One-way Road
- Gate
- Electric Vehicle Charging Station
- Parking ADA Accessible
- Parking Paved
- Parking Unpaved
- State Park No Hunting
- State Park Hunting
- Catch & Release Fly Fishing Only
- CONTOURS ARE ON 40 FT. INTERVALS

- Trail Information**
- Hiking Trail
 - North Country National Scenic Trail
 - Trail of Geology

- GPS Coordinates**
Decimal Degree Lat. Long.
1. Kildoo Picnic Area
40.95168, -80.16837
 2. Cleland Rock
40.92725, -80.18544
 3. Hells Hollow
40.93141, -80.23999



Hiking: 11.2 miles

Rugged trails traverse the gorge. For your safety and to protect the resource, stay on the trails and do not climb the waterfalls.

FOR A SAFE HIKE

- Check the weather before you hike.
- Dress appropriately and wear sturdy footwear, as trails may be slippery and rocks uneven.
- Stay on the trail to avoid getting lost or damaging the fragile habitat.

ALPHA PASS TRAIL: 1.5 miles, blue blazes, more difficult hiking

This trail is at the northern end of McConnell's Mill State Park and is part of the North Country National Scenic Trail (NCT). The trail begins at the Alpha Pass scenic vista and follows the east bank of Slippery Rock Creek. There is an exit to the Point Parking Area or the trail follows the creek to the historic mill.

BREAKNECK FALLS TRAIL: 0.4 mile, yellow blazes, more difficult hiking

The trail begins at Eckert Bridge. Hikers can enjoy songbirds and large mature hemlock trees all year, and an abundance of wildflowers in the spring. The trail follows along the eastern banks of Slippery Rock Creek to a short creek crossing at Cheeseman Run, ending with a steep climb through large boulders to the falls. The trail ends at the base of the falls. This is an out and back trail, it does not loop back to the starting point.

HELLS HOLLOW TRAIL: 0.5 mile, yellow blazes, easiest hiking

This trail begins at Hells Hollow parking lot, then follows and twice crosses Hell Run on its way to a lime kiln and Hells Hollow Falls. Although the main trail is smooth and level, the section by the waterfall can be slippery.

KILDOP TRAIL: 3-mile loop, yellow blazes, more difficult hiking

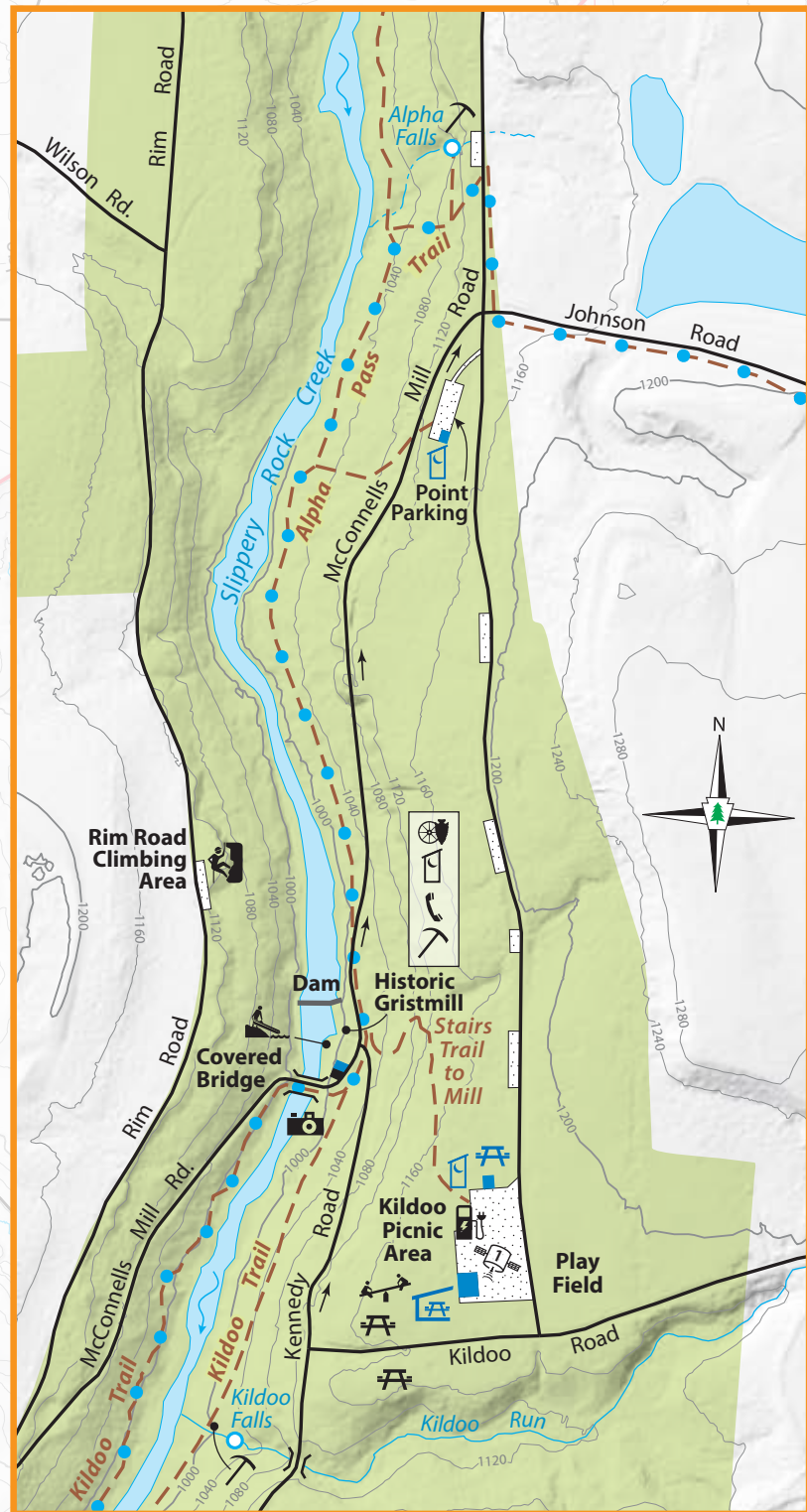
Kildoo Trail is south of the historic gristmill and begins at either end of the covered bridge. On the eastern bank, the trail begins with a 400-yard easier section to the Kildoo Falls, which then leads to rocky terrain on the remaining section to Eckert Bridge. Hikers cross Slippery Rock Creek at Eckert Bridge and continue on the west bank upstream to the covered bridge. The western section of the trail has blue blazes and is part of the NCT.

SLIPPERY ROCK GORGE TRAIL: 6.2 miles, blue blazes, most difficult hiking

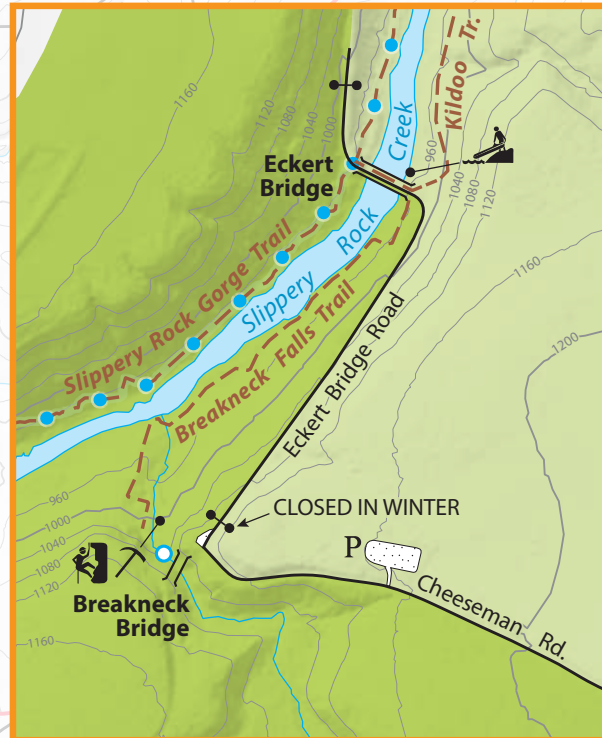
Part of the NCT, Slippery Rock Gorge Trail begins jointly with Hells Hollow Trail at the Hells Hollow parking lot. The gorge trail splits off just before the second footbridge. The first two miles of the trail follows the upper Hell Run Valley. The rest of the trail follows the Slippery Rock Creek Gorge north for just over four miles to Eckert Bridge. At about the 3.5-mile point, the trail descends into the deepest part of the gorge. This broad alluvial flood plain is known as Walnut Flats. The trail then becomes more difficult, traversing very steep terrain. At the 5-mile point, the trail climbs in elevation through a forested area before dropping down to creek level where it follows along the creek bank to Eckert Bridge.

Hikers should allow a minimum of six hours to hike to Eckert Bridge and back. This is not a loop trail. If you only plan a one-way trip, please set up a shuttle. Many hikers have become lost after nightfall from underestimating the length of the hike. Mobile phone reception is poor in this area.

Historic Gristmill & Kildoo Picnic Area



Eckert and Breakneck Bridges Area



Both maps are shown at the same scale.

