



# Moraine

Moraine  
State Park



## Pennsylvania State Parks Mission

The primary purpose of Pennsylvania state parks is to provide opportunities for enjoying healthful outdoor recreation and serve as outdoor classrooms for environmental education. In meeting these purposes, the conservation of the natural, scenic, aesthetic, and historical values of parks should be given first consideration. Stewardship responsibilities should be carried out in a way that protects the natural outdoor experience for the enjoyment of current and future generations.



2022



## TOP 10 ACTIVITIES



1. Bike the paved, multi-use trail from the bicycle rental to the Davis Hollow Marina.
2. Spend the night in a lakefront cabin.
3. Take the Trail of Geology driving tour and climb to the top of the Jacksville (Miller) Esker glacial deposit just north of the park.
4. Rent a pontoon boat, kayak, or canoe and explore the 3,225-acre lake.
5. Try your hand at the challenging 18-hole disc golf course.
6. Visit the waterfowl observation deck for a chance to see ducks, loons, bald eagles, osprey, and great blue herons.
7. Hike the Glacier Ridge Trail for spectacular scenic overlooks.
8. Have a picnic with a view in the Pleasant Valley Area on the South Shore.
9. Cool off and swim at Lakeview Beach.
10. Enjoy an educational tour of Lake Arthur onboard a double-decker pontoon boat operated by Moraine Preservation Fund.

## MORaine STATE PARK



The gently rolling hills, lush forests, and sparkling waters disguise a land that has endured the effects of continental glaciers and massive mineral extraction. Each year, over one million boaters, hikers, bikers, and swimmers visit the

16,725-acre park, yet never realize many people helped restore the park from prior coal mining and oil and gas drilling practices. Today, the park is an outstanding example of environmental engineering achievement.

The park is open daily from sunrise to sunset, unless otherwise posted. The park office near the entrance to South Shore is open Monday through Friday year round and weekends during the summer.

The Davis Hollow Marina office on the North Shore is open from April 15 to October 30 to provide marina applications and launch permits.

### Directions

GPS DD: Lat. 40.9395 Long. -80.0971

Moraine State Park is in northwestern Pennsylvania near the crossroads of I-79 and I-80. It is bisected by US 422 running east/west and PA 528 running north/south.

The North and South shores of the park are easily reached from exits on US 422.

### Reservations

Make online reservations at [www.dcnr.pa.gov/StateParks](http://www.dcnr.pa.gov/StateParks) or call toll-free 888-PA-PARKS (888-727-2757), 7:00 AM to 5:00 PM, Monday to Saturday.

## LEARN, EXPERIENCE, CONNECT

Moraine State Park offers a wide variety of programs year round. Gain a better understanding of the park's natural, cultural, and historical resources through guided outdoor recreation, hands-on activities, walks, special events, and other programs.

Curriculum-based environmental education programs are available to schools and organized groups. Call the park office

to schedule a group program. A variety of professional development workshops are offered for teachers.

Contact the park office or explore the online calendar of events, <https://events.dcnr.pa.gov>, for more information on programs and other learning experiences.



## RECREATIONAL OPPORTUNITIES

### Spend the Day

**PICNICKING:** Picnic tables, charcoal grills, and modern restrooms are located throughout the day use areas. Some facilities are ADA accessible. Seven picnic pavilions may be reserved up to 11 months in advance for a fee. Unreserved picnic pavilions are free on a first-come, first-served basis. All day use areas are open from sunrise to sunset.

#### PAVILIONS:

Pavilion Number	People	Location
1	80	Pleasant Valley Area
2	80	Pleasant Valley Area
3	80	Pleasant Valley Area
4	100	Lakeview Beach Area
5	100	Lakeview Beach Area
6	60	McDanel's Boat Launch Area
7	144	McDanel's Boat Launch Area



#### BOATING: up to 20 hp motors permitted

The 3,225-acre Lake Arthur has eight public boat launches. The non-powered boat launch at Pleasant Valley features an ADA accessible dock. Sailing races and instructional classes are held throughout the summer. Boating is prohibited in the Game Propagation Area and near the dam.

Motorboats must display a boat registration from any state. Non-powered boats must display one of the following: boat registration from any state; launch permit or mooring permit from Pennsylvania State Parks, available at most state park offices; launch use permit from the Pennsylvania Fish and Boat Commission.

**Crescent Bay Boat Rental:** Pontoon boats, motorboats, kayaks, canoes, and rowboats are available at this rental concession. Motorboat fuel, ice, and fishing bait are also available for purchase.

**Davis Hollow Marina:** The marina has motorboat fuel, a sanitary dump station for boats, launch permits, and seasonal mooring for almost 700 vessels. Wet and dry slips are designated for sailboats, catamarans, pontoons, and motorboats. Canoe and kayak rack spaces are also available. A limited number of first-come, first-served transient spaces are available for short-term stays. Outdoor winter storage for boats is also available in the park. Contact the marina office in advance to make sure space is available.

**Watts Bay Marina:** This area provides dry mooring for sailboats and catamarans. The marina accommodates boats in numbered parking spaces with tie-downs. Small sailboats and sailboards have rack spaces.

**WINDSURFING:** Barber Point, near Lakeview Beach, is recommended for windsurfing due to stronger winds and sparse boat traffic. A state park launch permit is required for wind surfboards. All boating regulations apply to wind surfboards.

**FISHING:** Lake Arthur is a warmwater fishery. Common species are northern pike, largemouth bass, channel catfish, black crappie, and bluegill. The Pennsylvania Fish and Boat Commission stocks muskellunge, walleyes, channel catfishes, and hybrid striped bass. Pennsylvania Fish and Boat Commission regulations and laws apply.



Photo by Charlene Reinhardt

Volunteers, park employees, and Pennsylvania Fish and Boat Commission employees have installed fish habitat structures throughout the lake. A map showing fish habitat project locations and water depths can be downloaded from the park website and is also posted at the park office, marina office, and the gift shop at McDanel's Boat Launch.

An ADA accessible fishing pier is at McDanel's Boat Launch. Fishing peninsulas are also found at the Bear Run and Old Route 422 boat launches, which also are great spots for children to fish.

#### Fishing is Prohibited in These Areas:

- From or within 100 feet of a boat dock, boat launch, or mooring area.
- Anywhere in the coves at Davis Hollow and Crescent Bay marinas.
- In the Game Propagation Area.
- Off of the bridges.
- From or within 100 feet of the beaches.
- Where posted no fishing.

**SWIMMING:** Swimming is permitted at two beaches along the shore of Lake Arthur. Lakeview Beach on the North Shore is a 550-foot sand beach. The Pleasant Valley Beach on the South Shore is a 650-foot turf and sand beach. A sand volleyball court and playground are on the west side of the beach. Both beaches are part of the Clean Air Beach Program; smoking is permitted only in designated areas.

The beaches are open daily from Memorial Day weekend to Labor Day unless otherwise posted. The regular hours are 8:00 AM to sunset. Swim at your own risk. Changing facilities and food concessions are available at both beaches. To keep these areas clean and safe, pets are prohibited in the beach areas.



**DISC GOLFING:** An 18-hole disc golf course is in the Lakeview Day Use Area. For more information, contact Pittsburgh Flying Disc. [www.pfds.org](http://www.pfds.org)

## LAKE ARTHUR WILDLIFE



Photo by Roger A. Druechel

Lake Arthur provides over 42 miles of scenic shoreline. Its tributaries include Muddy Creek, Big Run, Swamp Run, Bear Run, and over 75 intermittent streams. Ranging from an average depth of 11 feet to about 35 feet deep near the dam, the shallow waters of Lake Arthur are home to a variety of warmwater fish and other aquatic animals. Frogs, newts, turtles, and water snakes prowl the edges of the lake. Great blue herons, green herons, and belted kingfishers prey on small fish. Bald eagles nest in the park. View many species of lake birds from the waterfowl observation area along Park Road.

Osprey may be seen flying over Lake Arthur. Once extirpated from western Pennsylvania, these "fish hawks" have been reintroduced to the park through a hacking program begun in 1993. The first osprey pair to nest along Lake Arthur as a result of this effort raised three young in 1996. Due to a successful reintroduction program statewide, the osprey population has recovered and continues to expand.

## VOLUNTEER ORGANIZATIONS

The Moraine Preservation Fund (MPF) and the Moraine, McConnells Mill, Jennings Commission (3MJC) are volunteer organizations that support Moraine State Park. These organizations help develop projects like the Butterfly Trail, osprey and barn owl reintroduction programs, and the historic oil exhibit.

MPF has a gift shop and offers educational boat tours based out of

McDanel's Boat Launch. Programs on the boat teach about the wildlife of Moraine and the development of Lake Arthur.

The pontoon boat operates on a regular schedule throughout the summer. The pontoon boat is open to the public and is also available for charters for a fee.

**MPF:** [www.morainepreservationfund.org](http://www.morainepreservationfund.org)

**3MJC:** [www.3mjc.org](http://www.3mjc.org)

To learn more about the many types of volunteer activities at the park, contact the park office.



Wood duck



#### HORSEBACK RIDING: 20 miles

Equestrian trails are in the southwest and east sides of the park. They are marked with red blazes. Riding is limited to designated trails and roadsides throughout the park.

#### HIKING: see reverse side

#### BIKING: 7 miles

The paved, multi-use trail winds near the shoreline between the bike rental in the northwest corner of the park and the Davis Hollow Day Use and Watts Bay Marina areas. A bike rental concession operates spring through fall.

#### Caution:

- This trail is not a loop.
- The trail has several grades and curves.
- Please exercise caution and be considerate of other riders and walkers.

#### Stay the Night

**MODERN CABINS:** Eleven modern cabins are available for rent year round. These cabins sleep six people and have two bedrooms, bathroom with shower, kitchen, dining/living area, and electric heat. During the summer season, each cabin has a private dock on Lake Arthur. Renters must provide their own linens, towels, cookware, and tableware. Play equipment for children is in a central area. Cabins 7 and 11 are dog friendly. Cabins 1 and 11 are ADA accessible.

GPS DD: Lat. 40.96586 Long. -80.11389

#### Enjoy the Winter

**CROSS-COUNTRY SKIING:** Pleasant Valley and Sunken Garden trails are groomed when snow conditions permit. The trails are blazed blue and are suitable for all skill levels.

**SLEDDING:** A sledding area is near Pavilion #1 on the South Shore.

**SNOWMOBILING:** Conditions permitting, 26 miles of trails in the north and west portions of the park can be snowmobiled. Trails are marked with orange diamonds. There must be at least six inches of snow on the paved multi-use trail. Studded track snowmobiles are prohibited on the paved multi-use trail. Please refer

to bulletin boards for additional rules and regulations for snowmobiling.

**ICE SAFETY: Ice thickness is not monitored.** For your safety, make sure ice is at least 4" thick for a single user and 7" thick for a small group. For iceboating, make sure ice is at least 6" thick. Always carry safety equipment.

**ICE FISHING:** Common species caught are largemouth bass, crappie, bluegill, yellow perch, and northern pike. Conditions permitting, ice fishing is permitted in the Game Propagation Area from January 15 through March 15.

**ICE SKATING:** The cove by the Pleasant Valley Day Use Area is popular for ice skating.

**ICEBOATING:** Iceboats must display a state park launch permit.



Photo by Charlene Reinhardt

## PARK HISTORY

### Glacial History

At least four continental glaciers reached their greatest extent just north of Moraine State Park. These huge ice sheets, sometimes over a mile thick, transported stones and soil within, beneath, and in front of them, reshaping the land. When the glaciers retreated, they left behind the accumulated debris, which is called a moraine. Deposits of gravel, sand, and clay found throughout the area are evidence of the glaciers and their moraines.

### Human History

Indigenous people utilized the lands around Muddy Creek for hunting and traveled on several established pathways, including the Venango Path in the area of present day PA 528. In the early 1800s, forests were cleared and swamps were drained by early European settlers for farming.

In the late 1800s, wells were drilled to extract oil and gas. When the wells dried up, many were abandoned and left unsealed. Additional resources that were mined and used or sold by early residents include sand, sandstone, limestone, and clay. The discovery of bituminous coal ushered in a boom time for the region. Seven coal beds were deep-mined and later the land was strip-mined. Much of the park area lost its topsoil and many streams were polluted with abandoned mine drainage.

The Western Allegheny Railroad was built to transport these extracted minerals to Pittsburgh. The railroad ran the full length of the Muddy Creek Valley and through the

During one or more of the ice advances, a continental glacier dammed area creeks making three glacial lakes. To the north, north-flowing Slippery Rock Creek filled giant Lake Edmund. To the southwest, extinct McConnells Run filled tiny Lake Prouty. In the middle, north-flowing Muddy Creek filled the medium-sized Lake Watts.

The glacier dammed Lake Prouty on the edge of the drainage divide. Eventually Lake Prouty spilled over and rushed to the south, initiating the erosion of Slippery

Rock Creek Gorge. Lakes Watts and Edmund drained into the gorge, eroding it deeper and making Slippery Rock Creek flow south. Areas of the 400-foot-deep Slippery Rock Gorge may be seen at nearby McConnells Mill State Park.

The glacier created a landscape of rolling hills topped with hardwood trees and swamps in the valley bottoms.

Visit the park website for the *Trail of Geology Guide* for Moraine State Park.

Village of Isle, where the PA 528 bridge is today. Abandoned in 1939, the old railroad grade is still visible west of the dam and in the Muddy Creek finger of Lake Arthur.

In 1926, Frank W. Preston of England moved to the town of Meridian and opened a glass research lab. In addition to his study of glass, Dr. Preston was also an amateur geologist and naturalist. On a trip to the Muddy Creek Valley, he noticed that the hills had a unique shape and attributed it to the glacial periods. Preston studied the land for decades and named many of the landforms after Edmund Watts Arthur, a prominent Pittsburgh attorney and naturalist. With the support of friends, Preston formed the Western Pennsylvania Conservancy to purchase land to recreate the glacial landscape and preserve open space. Muddy Creek was dammed to create modern Lake Arthur as a smaller version of glacial Lake Watts.

The dam was completed by November of 1968 and in 1970, Lake Arthur reached its full level. Moraine State Park was dedicated on May 23, 1970.

Lake Arthur reminds us that our use of natural resources to meet human needs requires decisions that affect the quality of the environment.

### Points of Interest



**Davis Hollow Cabin:** Construction began in the late 1700s on this cabin of hand-hewn logs and hand-carved stone. Located behind the Davis Hollow Marina, it was used as a summer home by Mrs. Katherine Davis and her sister, Miss Eleanor Holt. The Friends of the Davis Hollow Cabin support maintenance and upkeep of the cabin through rentals and fundraisers.



**Historic Oil Exhibit:** An operating central power house is tucked in the woods just beyond Muskrat Cove where a stream crosses under the service road. Built at the turn of the century, the central power house contains a Bessemer engine, pumping jacks, and other equipment used to power several oil wells during the early days of the oil industry. The engine is operated several times a year by the Moraine, McConnells Mill, and Jennings Commission, a park friends group.

## INFORMATION AND RESERVATIONS

#### Moraine State Park

225 Pleasant Valley Road  
Portersville, PA 16051-9650  
724-368-8811  
[MoraineSP@pa.gov](mailto:MoraineSP@pa.gov)

An Equal Opportunity Employer  
[www.dcnr.pa.gov/StateParks](http://www.dcnr.pa.gov/StateParks)

#### Make online reservations at

[www.dcnr.pa.gov/StateParks](http://www.dcnr.pa.gov/StateParks) or call toll-free 888-PA-PARKS (888-727-2757), 7:00 AM to 5:00 PM, Monday to Saturday.

#### Electric Vehicle Charging Station

A 2-plug, electric vehicle charging station is available for public use in the bike rental parking lot on the North Shore. Please move to another parking space once your vehicle has been charged.

### Access for People with Disabilities

This symbol indicates facilities and activities that are Americans with Disabilities Act (ADA) accessible for people with disabilities. This publication text is available in alternative formats.

### In an Emergency

Call 911 and contact a park employee. Directions to the nearest hospital are posted on bulletin boards and at the park office.

#### NEAREST HOSPITAL

Butler Memorial Hospital  
1 Hospital Way  
Butler, PA 16001  
724-283-6666

### Nearby Attractions

Information on nearby attractions is available from the Butler County Tourist & Convention Bureau.  
[www.visitbutlercounty.com](http://www.visitbutlercounty.com)

**McConnells Mill State Park** encompasses the spectacular 930-acre Slippery Rock Creek Gorge, a National Natural Landmark that was carved by glacial ice and water. Popular activities are hiking, whitewater boating, and rock climbing. 724-368-8811

**Jennings Environmental Education Center** offers environmental education and

recreational programs for all ages. The park lands have hiking trails and a relict prairie. 724-794-6011

**Washington's Trail** is an auto route that retraces the approximate path of George Washington's trip of 1753-1754, which marked the beginning of the French and Indian War. The route is marked by signs and follows routes US 422 and PA 528 which pass through the park.  
[www.washingtonstrail.org](http://www.washingtonstrail.org)

### Protect and Preserve our Parks

Please make your visit safe and enjoyable. Obey all posted rules and regulations and respect fellow visitors and the resources of the park.

- Be prepared and bring the proper equipment. Natural areas may possess hazards. Your personal safety and that of your family are your responsibility.
- Alcoholic beverages are prohibited.

- Do your part to keep wildlife wild! Enjoy wildlife from a safe distance and do not feed or approach wild animals.



Photo by Chris Condello



HIKING: 28 miles



The hiking trails of Moraine State Park wander through forests, and grassy areas, along lake edges, and past wetlands. For your safety and to protect the resource, please stay on the trails.

Because uncontrolled pets may chase wildlife or frighten visitors, pets must be physically controlled, attended at all times, and on a leash.

**FIVE POINTS TRAIL: 1.3 miles, yellow blazes, easiest hiking**

This trail meanders through forests and by a small pond. Access to the trail is near Lakeview Beach and the organized group tenting area.

**GLACIER RIDGE TRAIL: 14.8 miles, blue blazes, most difficult hiking**

Designated as part of the North Country National Scenic Trail, this trail extends from the western end of Moraine State Park to Jennings Environmental Education Center. The trail winds through forests, crosses streams, and offers scenic views of Lake Arthur. Glacier Ridge Trail can be accessed at PA 528, Mount Union Road, the bike rental, and McDanels Launch Area. The Link Road Backpacking Shelters are available to backpackers by reservation only. Contact the park office for backpacking information.

**HILLTOP TRAIL: 2 loops, yellow blazes, more difficult hiking**

This trail passes by different stages of forest regeneration, cavity-nesting bird boxes, and the remains of a springhouse. Hikers can choose a 1.1-mile short loop or a 3-mile long loop. The trail includes flat grassy areas and gradual inclines that lead to fields high above the highway and lake. Access this trail near the entrance of Bear Run Boat Launch.

**PLEASANT VALLEY TRAIL: 1.9 miles, blue blazes, easiest hiking**

This lovely trail offers an easy hike through the hills and valleys of the South Shore, passing through wooded and open grassy areas. The trail passes near the Windy Knob and Bear Run picnic areas, crosses the Hilltop

Trail, and then intersects with Sunken Garden Trail. When conditions permit, the trail is groomed for cross-country skiing in the winter. Access to this trail is directly across Pleasant Valley Road from the Pleasant Valley Picnic Area.

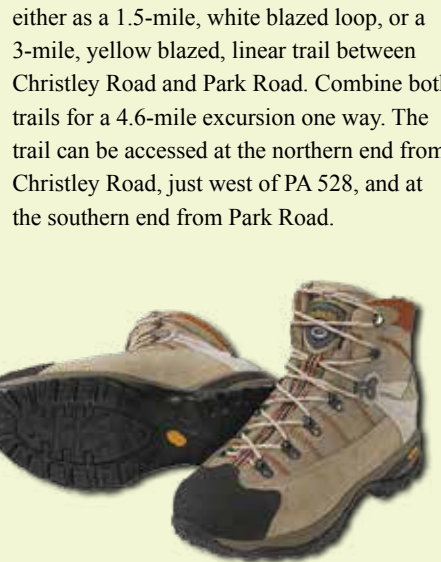
**SUNKEN GARDEN TRAIL: 3 loops, 1.9 to 3.6 miles, blue blazes, easiest hiking**

For an enjoyable and scenic hike that is close to the park office, Sunken Garden Trail offers views of the lake shoreline and travels through a variety of habitats and terrains. Hikers can choose from three loops, a 1.9-mile short loop, a 2.4-mile middle loop, or a 3.6-mile long loop.

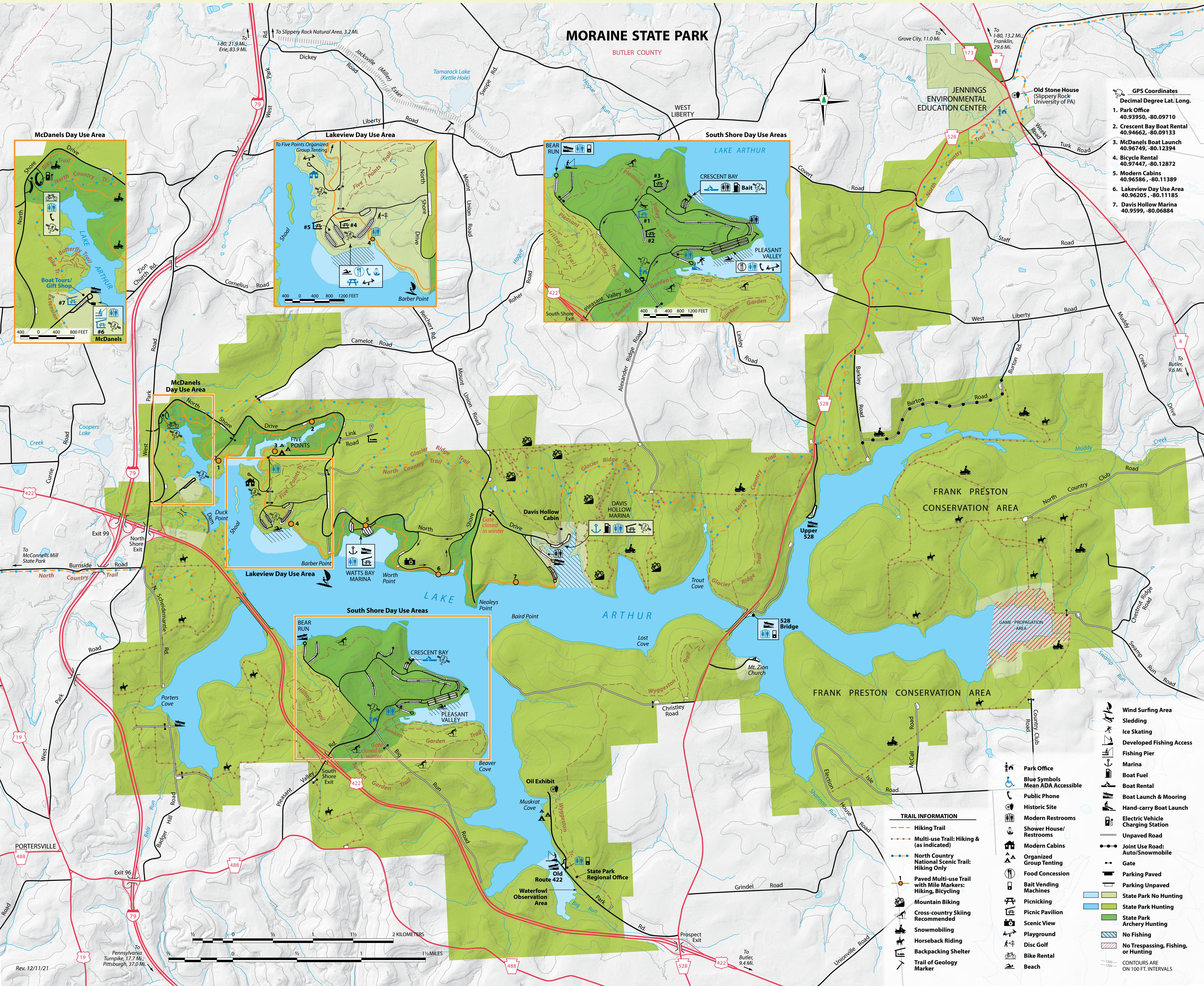
When conditions permit, the trail is groomed for cross-country skiing in the winter. In the Pleasant Valley Area, access the trail near the non-powered boat launch.

**WYGGESTON TRAIL: 1.5 to 4.6 miles, yellow and white blazes, most difficult hiking**

For the more adventurous, this trail has rougher, rockier terrain and is a more challenging hike than the other trails on the South Shore. The extra effort is well worth it because the trail takes hikers into a remote, undeveloped section of the park with diverse natural plant communities, and by an old house foundation, stone fences, and a historic oil central powerhouse. The trail can be hiked



Link Road Backpacking Shelter



- GPS Coordinates**  
Decimal Degree Lat. Long.
1. Park Office  
40.93950, -80.09710
  2. Crescent Bay Boat Rental  
40.94662, -80.09133
  3. McDanels Boat Launch  
40.96749, -80.12394
  4. Bicycle Rental  
40.97447, -80.12872
  5. Modern Cabins  
40.96586, -80.11389
  6. Lakeview Day Use Area  
40.96205, -80.11185
  7. Davis Hollow Marina  
40.9599, -80.06884

- Wind Surfing Area**  
Sledding  
Ice Skating  
Developed Fishing Access  
Fishing Pier  
Marina  
Boat Fuel  
Boat Rental  
Boat Launch & Mooring  
Hand-carry Boat Launch  
Electric Vehicle Charging Station  
Unpaved Road  
Auto/Snowmobile  
Gate  
Parking Paved  
Parking Unpaved  
State Park No Hunting  
State Park Hunting  
State Park Archery Hunting  
No Fishing  
No Trespassing, Fishing, or Hunting  
CONTOURS ARE ON 100 FT. INTERVALS

- TRAIL INFORMATION**
- Hiking Trail
  - Multi-use Trail: Hiking & (as indicated)
  - North Country National Scenic Trail: Hiking Only
  - Paved Multi-use Trail with Mile Markers: Hiking, Bicycling
  - Mountain Biking
  - Cross-country Skiing Recommended
  - Snowmobiling
  - Horseback Riding
  - Backpacking Shelter
  - Trail of Geology Marker

- Facilities**
- Park Office
  - Blue Symbols Mean ADA Accessible
  - Public Phone
  - Historic Site
  - Modern Restrooms
  - Shower House/Restrooms
  - Modern Cabins
  - Organized Group Tenting
  - Food Concession
  - Bait Vending Machines
  - Picnicking
  - Picnic Pavilion
  - Scenic View
  - Playground
  - Disc Golf
  - Bike Rental
  - Beach