

A Pennsylvania Recreational Guide for
Shawnee State Park



pennsylvania
DEPARTMENT OF CONSERVATION
AND NATURAL RESOURCES



Shawnee State Park
132 State Park Road
Schellsburg, PA 15559-7300
814-733-4218
ShawneeSP@pa.gov

Make online reservations at:
www.visitPAparks.com or call toll-free
888-PA-PARKS (888-727-2757), 7:00 AM
to 5:00 PM, Monday to Saturday.

www.visitPAparks.com



Shawnee State Park

Shawnee State Park is 3,983 acres of Pennsylvania’s scenic Ridge and Valley Province. Ten miles west of the historic town of Bedford along US 30, Shawnee has modern recreational facilities that blend into the natural environment. A focal point of the park is the 451-acre Shawnee Lake.

Directions

GPS DD: Lat. 40.02632 Long. -78.63557

US 30 and PA 96 pass through Shawnee State Park.

Reservations

Make online reservations at www.visitPAparks.com or call toll-free 888-PA-PARKS (888-727-2757), 7:00 AM to 5:00 PM, Monday to Saturday.

Recreational Opportunities

BICYCLING: 7.5 miles
The 3.4-mile Lake Shore Trail is easiest biking and includes a small section of shared road. All other designated bicycling trails are more difficult biking.

PICNICKING: Picnic tables, charcoal grills, water fountains, and restrooms are scattered around the park. Five picnic pavilions may be reserved up to 11 months in advance for a fee. Unreserved picnic pavilions are free on a first-come, first-served basis. Picnic Pavilion 3 is ADA accessible.



FISHING: The 451-acre Shawnee Lake is stocked with warmwater game fish. Common game species are smallmouth and largemouth basses, northern pikes, walleyes, muskellunges, pickerels, catfishes, crappies, yellow perch, bluegills, sunfishes, suckers, bullheads, and carps. An ADA accessible fishing pier is by the Diehl Boat Launch. Pennsylvania Fish and Boat Commission regulations and laws apply.

HUNTING AND FIREARMS: Over 3,000 acres are open to hunting, trapping, and the training of dogs during established seasons. Common game species are rabbits, squirrels, and grouse.

Hunting woodchucks, also known as groundhogs, is prohibited. Dog training is only permitted from the day following Labor Day through March 31 in designated hunting areas. The Department of Conservation and Natural Resources and the Pennsylvania Game Commission rules and regulations apply. Contact the park office for ADA accessible hunting information.

Use extreme caution with firearms at all times. Other visitors use the park during hunting seasons.

Firearms and archery equipment used for hunting may be uncased and ready for use only in authorized hunting areas during hunting seasons. In areas not open to hunting or during non-hunting seasons, firearms and archery equipment shall be kept in the owner’s vehicle or enclosed trailer. Exceptions include: law enforcement officers and individuals with a valid *Pennsylvania License to Carry Firearms* are authorized to carry a firearm concealed on their person while they are within a state park.

SWIMMING: The sand and turf beach has a modern shower house with flush toilets and showers. Vending machines are available. The beach is open from late May to mid-September, 8:00 AM to sunset. Swim at your own risk. Please read and follow posted rules.

DISC GOLFING: The 9-hole, par-three course in the main day use area has nice distance holes and an up-and-over-the-hill challenge.

HIKING: 16 miles of trails
Trail lengths are listed on the map.
Tell us about your hike at: www.ExplorePATrails.com

BOATING: electric motors permitted
The 451-acre Shawnee Lake has three boat launch areas and 183 dry boat mooring spaces. The main boat dock and launch ramp are ADA accessible. A boat concession rents paddleboats, canoes, and rowboats during the summer.

Motorboats must display a boat registration from any state. Non-powered boats must display one of the following: boat registration from any state; launch permit or mooring permit from Pennsylvania State Parks, available at most state park offices; launch use permit from the Pennsylvania Fish and Boat Commission.

Stay the Night

CAMPING: flush toilets, warm showers
The 198 sites have picnic tables and fire rings, and accommodate tents or trailers. About half of the sites have electric hookups. Fifteen sites have full hookups. Several campsites are ADA accessible. There are sanitary dump stations and centrally located shower houses with flush toilets, showers, and laundry tubs. The camping season begins the second Friday in April and ends in early to mid-December.

CAMPING COTTAGES: The three cottages sleep five people in bunk beds, and have wooden floors, windows, porch, picnic table, fire ring, electric heat, and outlets. One cottage is ADA accessible.

YURTS: These round, canvas and wood walled tents have a wooden deck and sleep five people in bunk beds. Yurts have a cooking stove, microwave, refrigerator, countertop, table, chairs, fire ring, picnic table, electric heat, and outlets. One yurt is ADA accessible.

ORGANIZED GROUP TENTING: On the secluded Kegg Run finger of the lake, the organized group tenting area offers campers easy access to fishing, and canoe and kayak launching. Four campsites each have a capacity of 20 campers or a total capacity of 80. Each site has picnic tables and a fire ring. The camp has non-flush restrooms and a hand-pumped well. Organized youth and adult groups can rent the area mid-April through mid-October. Advance reservations are required.



LAKESIDE LODGE: This two-story house is on an island in Lake Shawnee and is available year round. It sleeps eight people in four bedrooms with two double beds and four single beds. The lodge has air conditioning and a modern kitchen. A fire ring and picnic table are in the yard. Guests should bring their own linens, towels, and dishes.

Enjoy the Winter

SNOWMOBILING: Conditions permitting, registered snowmobiles are permitted on the 11-mile trail network in the eastern side of the park.

CROSS-COUNTRY SKIING AND SNOWSHOEING: Most trails are suitable for novice to experienced skiers and snowshoers. Lake Shore is the most popular trail.

SLEDDING AND TOBOGGANING: Numerous sledding hills are in the main picnic area.

ICE SAFETY: Ice thickness is not monitored. For your safety, make sure ice is at least 4” thick for a single person and 7” thick for a small group. Always carry safety equipment.

ICE FISHING: Common species caught through the ice are yellow perch, northern pikes, walleyes, and pickerels.

ICE SKATING: An area at Colvin Boat Launch is popular when conditions permit.

Learn, Experience, Connect

The park naturalist conducts a variety of spring and summer programs for school groups, campers, other local groups, and the general public. The programs focus on the natural and historical resources of the park and surrounding landscape.

Curriculum-based environmental education programs are available to schools and organized groups. Call the park office to schedule a group program. A variety of professional development workshops are offered for teachers.

Contact the park office or explore the online calendar of events, <https://events.dcnr.pa.gov>, for more information on programs and other learning experiences.

History

The park is named for the Shawnee people who migrated from the Potomac to the Ohio Country. In the early 1750s, a Shawnee village known as “Shawanese Cabbins” was located just south of Schellsburg.

During the French and Indian War, General Forbes camped his army within the boundaries of the park while building the Forbes Road in the campaign of 1758 against the French at Fort Duquesne, Pittsburgh. The rear guard of the army was commanded by Colonel George Washington, who slept here

on October 15, 1758. One can still walk remnants of the Forbes Trail within the park.

Another famous person who slept on park property was John Bowman, who owned the “Water Brooks Farm” that was in the middle of the park. Bowman was president and chancellor of the University of Pittsburgh and was the driving force behind building the 42-story Cathedral of Learning.

The white barn, buildings, and houses now surrounded by a lake of water were once surrounded by a sea of grass.

Nearby Attractions

Information on nearby attractions is available from the Bedford County Visitors Bureau.
www.VisitBedfordCounty.com.

For downhill skiers, **Blue Knob Ski Area, in Blue Knob State Park**, is one of the best ski resorts in Pennsylvania and is 25 miles from Shawnee State Park. Cross-country skiers also enjoy a variety of interesting terrain for their sport.

Bedford County offers many points of interest. Days can be spent sampling the past heritage and the present culture through its mountains and rolling agricultural fields. The county is well known by sportsmen for its beautiful trout streams, abundant deer, and other wild game. For the non-hunter, Bedford offers great wildlife watching opportunities.

US 30, **the Lincoln Highway**, roughly follows the Forbes Trail that was the main highway between Fort Bedford and Fort Ligonier in the 1700s. Original inns and other examples of a unique Bedford architectural style can be seen along the road and in small settlements like Schellsburg.

The **City of Bedford Historic District** includes the oldest courthouse in use in Pennsylvania and the Espy House where President George Washington headquartered in 1794 to review his troops on their way to suppress the Whiskey Rebellion in Western Pennsylvania. A walking tour of 51 buildings in the historic district is available in the Bedford County Travel Guide.

Old Bedford Village, on old US 220 just north of Bedford, is a complex of historical buildings which were collected from all over the county. Arranged in the manner of a typical colonial settlement, the buildings were reconstructed and contain demonstrations of the early American crafts which were found in colonial Bedford. Craftsmen clothed in authentic garb explain their craft.

Access for People with Disabilities

This symbol indicates facilities and activities that are Americans with Disabilities Act (ADA) accessible for people with disabilities. This publication text is available in alternative formats.

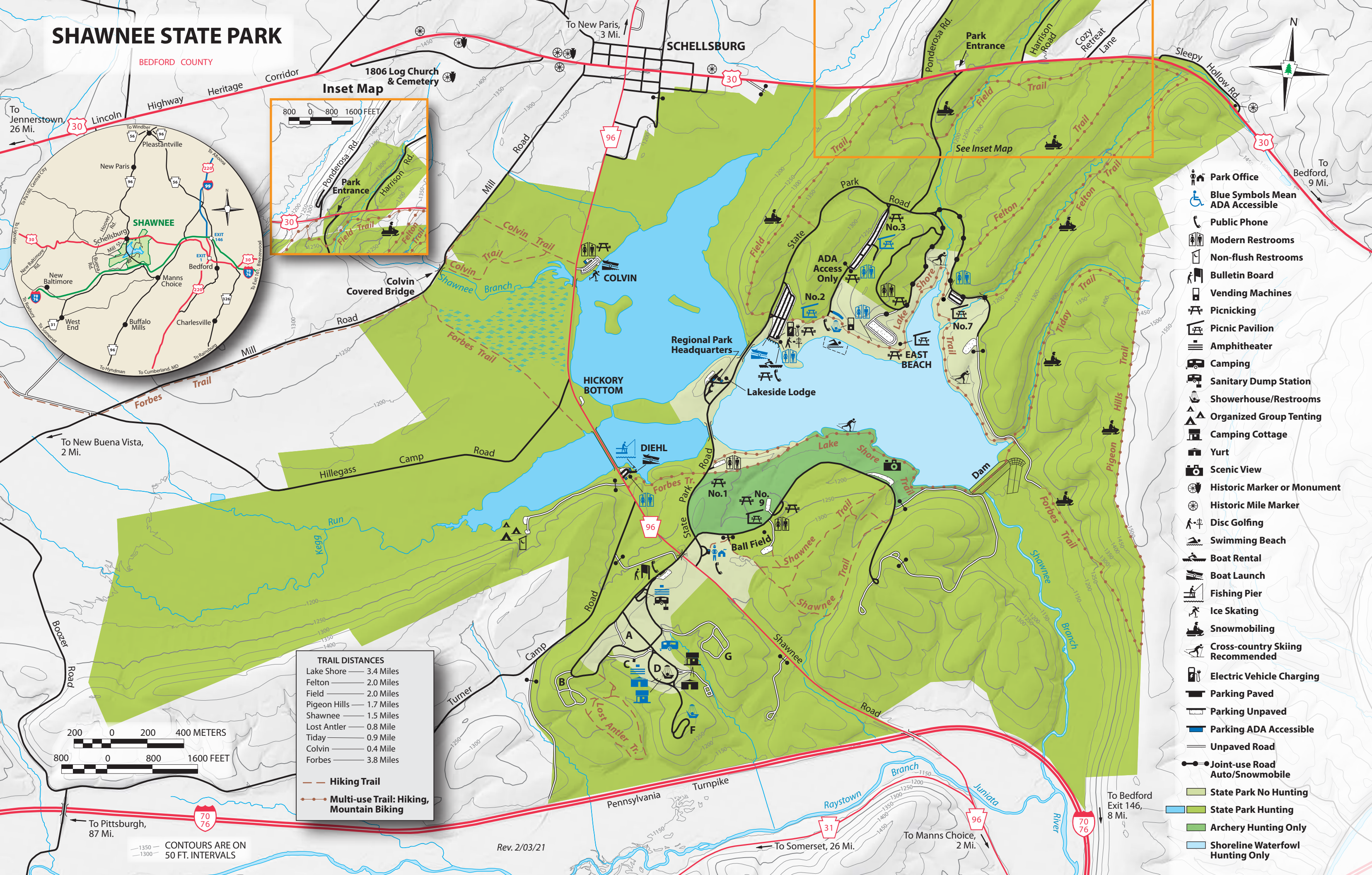
If you need an accommodation to participate in park activities due to a disability, please contact the park you plan to visit.

In an Emergency

Call 911 and contact a park employee. Directions to the nearest hospital are posted on bulletin boards and at the park office.

NEAREST HOSPITAL
UPMC Bedford Memorial Hospital
10455 Lincoln Highway
Everett, PA 15537
814-623-6161

SHAWNEE STATE PARK



BEDFORD COUNTY

Lincoln

SHAWNEE

Schellsburg

Bedford

Charlesville

Buffalo Mills

West End

New Baltimore

To New Paris, 3 Mi.

To Bedford, 9 Mi.

To Mans Choice

To Rainburg

To Hyndman

To New Buena Vista, 2 Mi.

To Pittsburgh, 87 Mi.

To Somerset, 26 Mi.

To Manns Choice, 2 Mi.

To Bedford Exit 146, 8 Mi.

To Bedford, 9 Mi.

To Bedford, 9 Mi.

To Bedford, 9 Mi.

To Bedford, 9 Mi.

To Bedford, 9 Mi.

To Bedford, 9 Mi.

To Bedford, 9 Mi.

To Bedford, 9 Mi.

To Bedford, 9 Mi.

To Bedford, 9 Mi.

To Bedford, 9 Mi.

To Bedford, 9 Mi.

To Bedford, 9 Mi.

To Bedford, 9 Mi.

To Bedford, 9 Mi.

To Bedford, 9 Mi.

To Bedford, 9 Mi.

To Bedford, 9 Mi.

To Bedford, 9 Mi.

To Bedford, 9 Mi.

To Bedford, 9 Mi.

To Bedford, 9 Mi.

To Bedford, 9 Mi.

To Bedford, 9 Mi.

To Bedford, 9 Mi.

To Bedford, 9 Mi.

To Bedford, 9 Mi.

To Bedford, 9 Mi.

To Bedford, 9 Mi.

To Bedford, 9 Mi.

To Bedford, 9 Mi.

To Bedford, 9 Mi.

To Bedford, 9 Mi.

To Bedford, 9 Mi.

To Bedford, 9 Mi.

To Bedford, 9 Mi.

To Bedford, 9 Mi.

To Bedford, 9 Mi.

To Bedford, 9 Mi.

To Bedford, 9 Mi.

To Bedford, 9 Mi.

To Bedford, 9 Mi.

To Bedford, 9 Mi.

To Bedford, 9 Mi.

To Bedford, 9 Mi.

To Bedford, 9 Mi.

To Bedford, 9 Mi.

To Bedford, 9 Mi.

To Bedford, 9 Mi.

To Bedford, 9 Mi.

To Bedford, 9 Mi.

To Bedford, 9 Mi.

To Bedford, 9 Mi.

To Bedford, 9 Mi.

To Bedford, 9 Mi.

To Bedford, 9 Mi.

To Bedford, 9 Mi.

To Bedford, 9 Mi.

To Bedford, 9 Mi.

To Bedford, 9 Mi.

To Bedford, 9 Mi.

To Bedford, 9 Mi.

To Bedford, 9 Mi.

To Bedford, 9 Mi.

To Bedford, 9 Mi.

To Bedford, 9 Mi.

To Bedford, 9 Mi.

To Bedford, 9 Mi.

To Bedford, 9 Mi.

To Bedford, 9 Mi.

To Bedford, 9 Mi.

To Bedford, 9 Mi.

To Bedford, 9 Mi.

To Bedford, 9 Mi.

To Bedford, 9 Mi.

To Bedford, 9 Mi.

To Bedford, 9 Mi.

To Bedford, 9 Mi.

To Bedford, 9 Mi.

To Bedford, 9 Mi.

To Bedford, 9 Mi.

To Bedford, 9 Mi.

To Bedford, 9 Mi.

To Bedford, 9 Mi.

To Bedford, 9 Mi.

To Bedford, 9 Mi.

To Bedford, 9 Mi.

To Bedford, 9 Mi.

To Bedford, 9 Mi.

To Bedford, 9 Mi.

To Bedford, 9 Mi.

To Bedford, 9 Mi.

To Bedford, 9 Mi.

To Bedford, 9 Mi.

To Bedford, 9 Mi.

To Bedford, 9 Mi.

To Bedford, 9 Mi.

To Bedford, 9 Mi.

To Bedford, 9 Mi.

To Bedford, 9 Mi.

To Bedford, 9 Mi.

To Bedford, 9 Mi.

To Bedford, 9 Mi.

To Bedford, 9 Mi.

To Bedford, 9 Mi.

To Bedford, 9 Mi.

To Bedford, 9 Mi.

To Bedford, 9 Mi.

To Bedford, 9 Mi.

To Bedford, 9 Mi.

To Bedford, 9 Mi.

To Bedford, 9 Mi.

To Bedford, 9 Mi.

To Bedford, 9 Mi.

To Bedford, 9 Mi.

To Bedford, 9 Mi.

To Bedford, 9 Mi.

To Bedford, 9 Mi.

To Bedford, 9 Mi.

To Bedford, 9 Mi.

To Bedford, 9 Mi.

To Bedford, 9 Mi.

To Bedford, 9 Mi.

To Bedford, 9 Mi.

To Bedford, 9 Mi.

To Bedford, 9 Mi.

To Bedford, 9 Mi.

To Bedford, 9 Mi.

To Bedford, 9 Mi.

To Bedford, 9 Mi.

To Bedford, 9 Mi.

To Bedford, 9 Mi.

To Bedford, 9 Mi.

To Bedford, 9 Mi.

To Bedford, 9 Mi.

To Bedford, 9 Mi.

To Bedford, 9 Mi.

To Bedford, 9 Mi.

To Bedford, 9 Mi.

To Bedford, 9 Mi.

To Bedford, 9 Mi.

To Bedford, 9 Mi.

To Bedford, 9 Mi.

To Bedford, 9 Mi.

To Bedford, 9 Mi.

To Bedford, 9 Mi.

To Bedford, 9 Mi.

To Bedford, 9 Mi.

To Bedford, 9 Mi.

To Bedford, 9 Mi.

To Bedford, 9 Mi.

To Bedford, 9 Mi.

To Bedford, 9 Mi.

To Bedford, 9 Mi.

To Bedford, 9 Mi.

To Bedford, 9 Mi.

To Bedford, 9 Mi.

To Bedford, 9 Mi.

To Bedford, 9 Mi.

To Bedford, 9 Mi.

To Bedford, 9 Mi.

To Bedford, 9 Mi.

To Bedford, 9 Mi.

To Bedford, 9 Mi.

To Bedford, 9 Mi.

To Bedford, 9 Mi.

To Bedford, 9 Mi.

To Bedford, 9 Mi.

To Bedford, 9 Mi.

To Bedford, 9 Mi.

To Bedford, 9 Mi.

To Bedford, 9 Mi.

To Bedford, 9 Mi.

To Bedford, 9 Mi.

To Bedford, 9 Mi.

To Bedford, 9 Mi.

To Bedford, 9 Mi.

To Bedford, 9 Mi.

To Bedford, 9 Mi.

To Bedford, 9 Mi.

To Bedford, 9 Mi.

To Bedford, 9 Mi.

To Bedford, 9 Mi.

To Bedford, 9 Mi.

To Bedford, 9 Mi.

To Bedford, 9 Mi.

To Bedford, 9 Mi.

To Bedford, 9 Mi.

To Bedford, 9 Mi.

To Bedford, 9 Mi.

To Bedford, 9 Mi.

To Bedford, 9 Mi.

To Bedford, 9 Mi.

To Bedford, 9 Mi.

To Bedford, 9 Mi.

To Bedford, 9 Mi.

To Bedford, 9 Mi.

To Bedford, 9 Mi.

To Bedford, 9 Mi.

To Bedford, 9 Mi.

To Bedford, 9 Mi.

To Bedford, 9 Mi.

To Bedford, 9 Mi.

To Bedford, 9 Mi.

To Bedford, 9 Mi.

To Bedford, 9 Mi.

To Bedford, 9 Mi.

To Bedford, 9 Mi.

To Bedford, 9 Mi.

To Bedford, 9 Mi.

To Bedford, 9 Mi.

To Bedford, 9 Mi.

To Bedford, 9 Mi.

To Bedford, 9 Mi.

To Bedford, 9 Mi.

To Bedford, 9 Mi.

To Bedford, 9 Mi.

To Bedford, 9 Mi.

To Bedford, 9 Mi.

To Bedford, 9 Mi.

To Bedford, 9 Mi.

To Bedford, 9 Mi.

To Bedford, 9 Mi.

To Bedford, 9 Mi.

To Bedford, 9 Mi.

To Bedford, 9 Mi.

To Bedford, 9 Mi.

To Bedford, 9 Mi.

To Bedford, 9 Mi.

To Bedford, 9 Mi.

To Bedford, 9 Mi.

To Bedford, 9 Mi.

To Bedford, 9 Mi.

To Bedford, 9 Mi.

To Bedford, 9 Mi.

To Bedford, 9 Mi.

To Bedford, 9 Mi.

To Bedford, 9 Mi.

To Bedford, 9 Mi.

To Bedford, 9 Mi.

To Bedford, 9 Mi.

To Bedford, 9 Mi.

To Bedford, 9 Mi.

To Bedford, 9 Mi.

To Bedford, 9 Mi.

To Bedford, 9 Mi.

To Bedford, 9 Mi.

To Bedford, 9 Mi.

To Bedford, 9 Mi.

To Bedford, 9 Mi.

To Bedford, 9 Mi.

To Bedford, 9 Mi.

To Bedford, 9 Mi.

To Bedford, 9 Mi.

To Bedford, 9 Mi.

To Bedford, 9 Mi.

To Bedford, 9 Mi.

To Bedford, 9 Mi.

To Bedford, 9 Mi.

To Bedford, 9 Mi.

To Bedford, 9 Mi.

To Bedford, 9 Mi.

To Bedford, 9 Mi.

To Bedford, 9 Mi.

To Bedford, 9 Mi.

To Bedford, 9 Mi.

To Bedford, 9 Mi.

To Bedford, 9 Mi.

To Bedford, 9 Mi.

To Bedford, 9 Mi.

To Bedford, 9 Mi.

To Bedford, 9 Mi.

To Bedford, 9 Mi.

To Bedford, 9 Mi.

To Bedford, 9 Mi.

To Bedford, 9 Mi.

To Bedford, 9 Mi.

To Bedford, 9 Mi.

To Bedford, 9 Mi.

To Bedford, 9 Mi.

To Bedford, 9 Mi.

To Bedford, 9 Mi.

To Bedford, 9 Mi.

To Bedford, 9 Mi.

To Bedford, 9 Mi.

To Bedford, 9 Mi.

To Bedford, 9 Mi.