

A Pennsylvania Recreational Guide for
White Clay Creek Preserve



pennsylvania
DEPARTMENT OF CONSERVATION
AND NATURAL RESOURCES



White Clay Creek Preserve
405 Sharpless Road
Landenberg, PA 19350
610-274-2900
WhiteClaySP@pa.gov

Make online reservations at:
www.visitPAparks.com or call toll-free
888-PA-PARKS (888-727-2757), 7:00 AM
to 5:00 PM, Monday to Saturday.

www.visitPAparks.com **visitPAparks**

White Clay Creek Preserve

The 3,050-acre White Clay Creek Preserve is in southern Chester County, three miles north of Newark, Delaware. The White Clay Creek Valley, which forms the core of the preserve, varies from steep to gradually rolling hills with some flat bottomlands, all drained by the creek. White Clay Creek Preserve shares a boundary with Delaware’s White Clay Creek State Park.

Because White Clay Creek possesses outstanding scenic, wildlife, recreational, and cultural value, it has been designated by Congress as a National Wild and Scenic River. Thus, it shall be preserved in free-flowing condition for the benefit and enjoyment of present and future generations.

Directions

GPS DD: Lat. 39.746823 Long. -75.774176

The park is located 11 miles south of the Russellville/New London exit of US 1, along PA 896 and Indiantown Road. Address: 405 Sharpless Road, Landenberg, PA 19350-0172

Recreational Opportunities

White Clay Creek Preserve is managed for year-round, low-intensity recreational activities. Day use areas are open daily from sunrise to sunset.



FISHING: White Clay Creek is stocked several times throughout the season and is considered one of the best trout streams in the area. Special delayed harvest and artificial lures only regulations apply to Middle Branch White Clay Creek from Good Hope Road south to its confluence with East Branch White Clay Creek. Any bait may be used on the east branch. Middle Branch White Clay Creek is also a Keystone Select Stream, indicating the stocking of larger fish. Big Elk Creek is also stocked with trout from the bridge at Route 841 to the Maryland border.

Pennsylvania Fish and Boat Commission regulations and laws apply.

HIKING: 12 miles
Hiking trails explore the habitats of the park and tie in with trails in Delaware’s White Clay Creek State Park. Please travel on designated trails only.

MULTI-USE TRAILS: 8 miles
Hiking, bicycling, and horseback riding are permitted on Edwin Leid Trail and on the PennDel Trail from where it meets Edwin Leid Trail south into Delaware’s White Clay Creek State Park.

CROSS-COUNTRY SKIING: Cross-country skiers may use the hiking and equestrian trails when snow cover permits.

HUNTING AND FIREARMS: About 2,750 acres are open to deer hunting only. The main section of the preserve around the park office and the northern section east of Arc Corner Road are open to the use of archery equipment and muzzleloaders for deer hunting only during respective seasons.

The use of shotguns is permitted during regular deer seasons and for special regulations areas in all 1,712 acres of the Big Elk section that borders Maryland. The Big Elk section is the only area of the preserve where the use of shotguns for deer hunting is permitted. Use of rifles is prohibited in the preserve.

Hunting woodchucks, also known as groundhogs, is prohibited. Dog training is only permitted from the day following Labor Day through March 31 in designated hunting areas. The Department of Conservation and Natural Resources and the Pennsylvania Game Commission rules and regulations apply. Contact the park office for ADA accessible hunting information.

Use extreme caution with firearms at all times. Other visitors use the park during hunting seasons. Firearms and archery equipment used for hunting may be uncased and ready for use only in authorized hunting areas during hunting seasons. In areas not open to hunting or during non-hunting seasons, firearms and archery equipment shall be kept in the owner’s vehicle or enclosed trailer. Exceptions include: law enforcement officers and individuals with a valid *Pennsylvania License to Carry Firearms* are authorized to carry a firearm concealed on their person while they are within a state park.

Learn, Experience, Connect

White Clay Creek Preserve offers a variety of programs from April through October. Gain a better understanding of the park’s natural, cultural, and historical resources through guided outdoor recreation, hands-on activities, walks, special events, and other programs.

Curriculum-based environmental education programs are available to schools and organized groups. Call the park office to schedule a group program. A variety of professional development workshops are also offered for teachers.

Contact the park office or explore the online calendar of events, <https://events.dcnr.pa.gov>, for more information on programs and other learning experiences.

History

White Clay Creek Preserve is part of a larger tract of land sold to William Penn in 1683 by Lenape Chief Kekelappen. It is thought that Kekelappen lived in Opasiskunk, a Lenape town which appears on a survey map of 1699 at the confluence of the middle and east branches of White Clay Creek. This area is now part of the preserve.

Opasiskunk was a large settlement, covering several acres. Archeological evidence points to habitation in the area from the Early Archaic period up through the early 18th Century. Frequent flooding over centuries obliterated all surface evidence of this once important settlement.

There are several points of historical interest in the preserve. The Evans House, also known as the Yeatman Mill House, is probably the oldest dwelling in the area. It was the



London Tract Meeting House

hub of a very prosperous milling and agricultural complex in the 18th and 19th centuries. Also located in the preserve are the London Tract Meeting House and adjacent Sexton House. Built in 1729, the buildings are located at the intersection of Sharpless and London Tract roads. In the meeting house’s stone-walled cemetery rest many of the area’s earliest European settlers including Dr. David Eaton, whose home across the street in the preserve is a classic example of a double door Pennsylvania stone farmhouse.

The Tri-State Marker (Pennsylvania, Delaware, Maryland) and the Arc Corner Monument mark historical points along the Mason-Dixon Line and can be found within the preserve. The Mason-Dixon Line was created to settle property disputes by establishing the boundaries between Pennsylvania, Delaware, and Maryland.

In 1984, the DuPont Company donated land to Pennsylvania and Delaware for the purpose of preserving the diverse and unique plant and animal species, and the rich cultural heritage of the area. Today, these lands form the bi-state White Clay Creek Preserve, the only land designated as a preserve in the Pennsylvania Bureau of State Parks.

Nearby Attractions

Information on nearby attractions is available from the Chester County Conference and Visitors Bureau, 484-770-8550. www.brandywinevalley.com

DELAWARE’S WHITE CLAY CREEK STATE PARK
The 4,000-acre Delaware state park includes 486 acres of the original land grant of White Clay Creek Preserve. The park is ideal for a quiet walk or a family picnic and has exceptional opportunities for bird watching and photography. A disc golf course and over 30 miles of nature and fitness trails offer a pleasant way to exercise and enjoy the outdoors. Educational programs are offered year round at the Chambers House Nature Center on Hopkins Road. The park office is near the intersection of Chambers Rock and Thompson Station roads.

For more information, contact Delaware’s White Clay Creek State Park office, 302-368-6900. <https://destateparks.com/WhiteClayCreek>



Protect and Preserve Our Parks

Please make your visit safe and enjoyable. Obey all posted rules and regulations and respect fellow visitors and the resources of the park.

- Be prepared and bring the proper equipment. Natural areas may possess hazards. Your personal safety and that of your family are your responsibility.

- Alcoholic beverages are prohibited.

- Because uncontrolled pets may chase wildlife or frighten visitors, pets must be physically controlled, attended at all times, and on a leash, caged, or crated. Electronic fences and leashes are prohibited.

- Do your part to keep wildlife wild! Enjoy wildlife from a safe distance and do not feed or approach wild animals.

- Please park only in designated areas and obey all traffic regulations.

- Please recycle. Place trash accumulated during your stay in proper receptacles or take it home with you.

- Soliciting and posting signs are prohibited without approval from the Department of Conservation and Natural Resources.



Swamp milkweed

Access for People with Disabilities

This symbol indicates facilities and activities that are Americans with Disabilities Act (ADA) accessible for people with disabilities. This publication text is available in alternative formats.

If you need an accommodation to participate in park activities due to a disability, please contact the park you plan to visit.

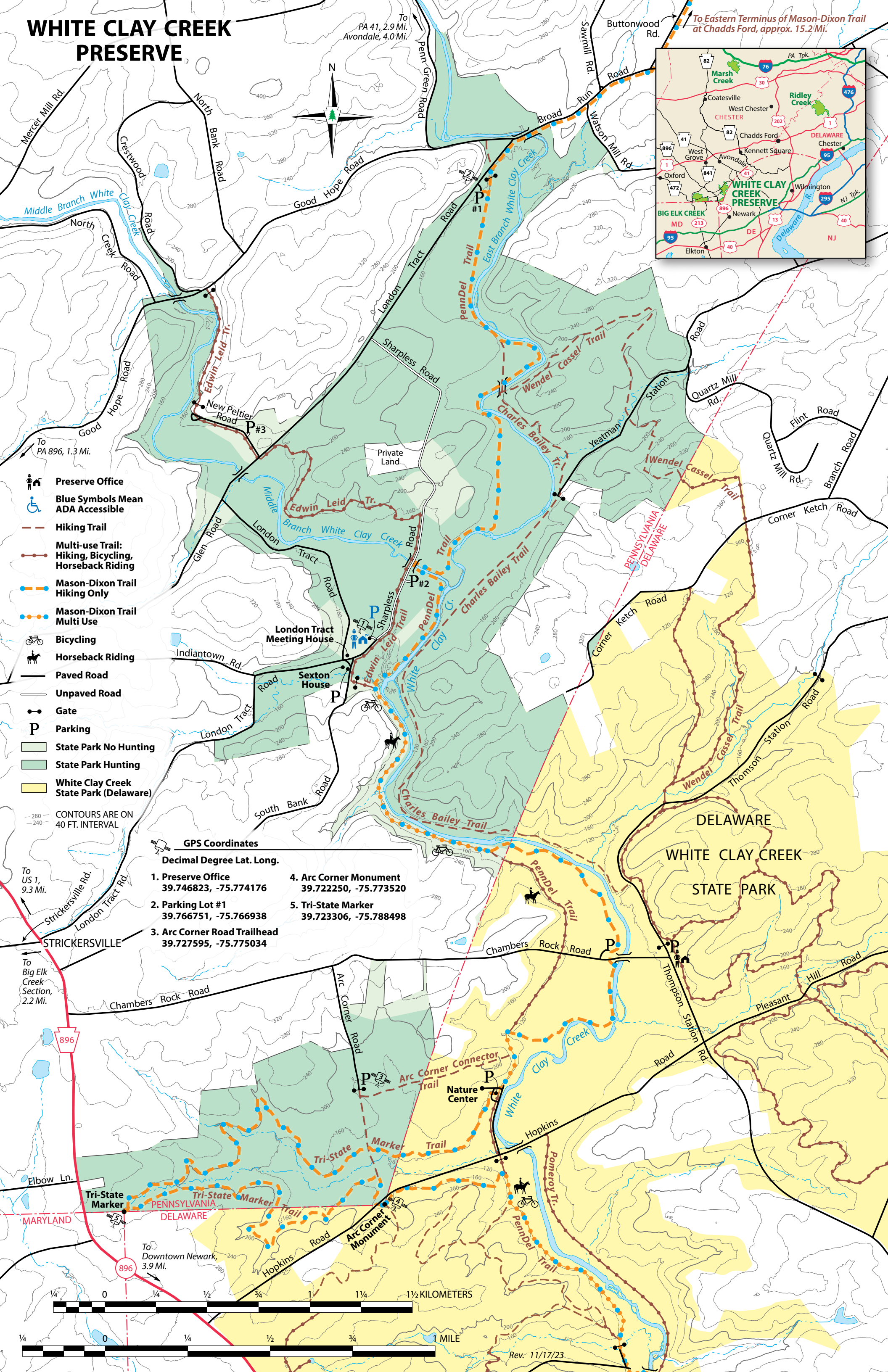
In an Emergency

Call 911 and contact a park employee. Directions to the nearest hospital are posted on bulletin boards and at the park office.

NEAREST HOSPITALS
Jennersville Regional Hospital
1015 West Baltimore Pike
West Grove, PA 19390
610-869-1000

Christiana Hospital
4755 Ogletown-Stanton Rd.
Newark, DE 19718
302-733-1000

WHITE CLAY CREEK PRESERVE



- Preserve Office
- Blue Symbols Mean ADA Accessible
- Hiking Trail
- Multi-use Trail: Hiking, Bicycling, Horseback Riding
- Mason-Dixon Trail Hiking Only
- Mason-Dixon Trail Multi Use
- Bicycling
- Horseback Riding
- Paved Road
- Unpaved Road
- Gate
- Parking
- State Park No Hunting
- State Park Hunting
- White Clay Creek State Park (Delaware)

CONTOURS ARE ON 40 FT. INTERVAL

- GPS Coordinates**
- Decimal Degree Lat. Long.**
- 1. Preserve Office
39.746823, -75.774176
 - 2. Parking Lot #1
39.766751, -75.766938
 - 3. Arc Corner Road Trailhead
39.727595, -75.775034
 - 4. Arc Corner Monument
39.722250, -75.773520
 - 5. Tri-State Marker
39.723306, -75.788498

